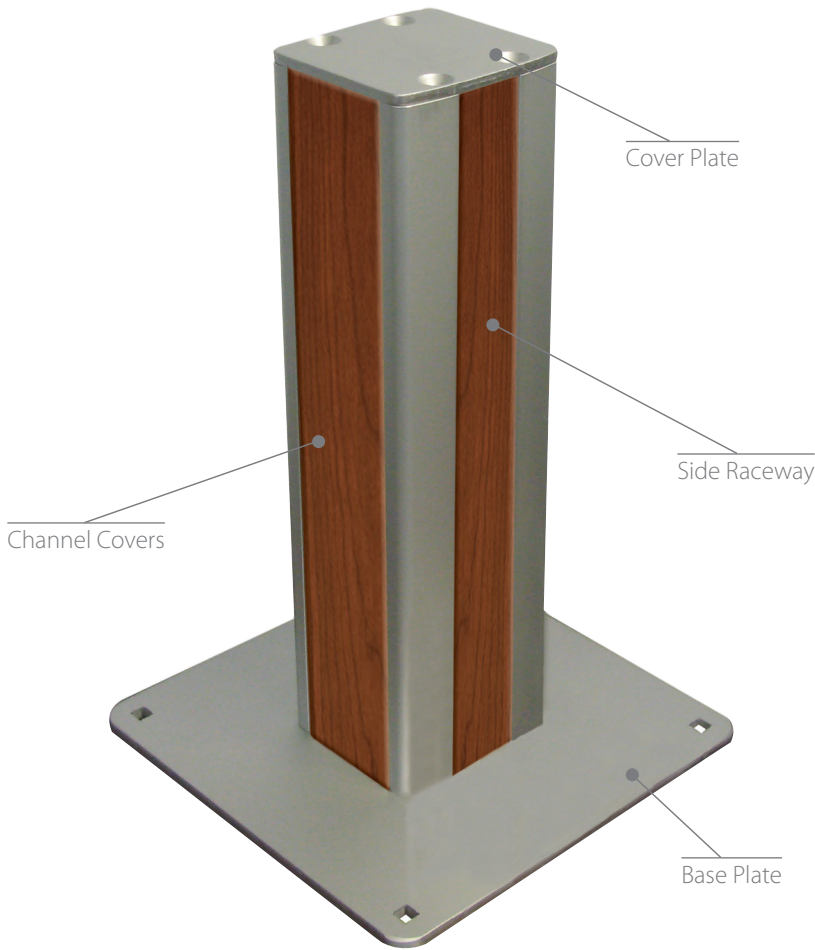


Counter-Top Mounts



Part Number: CTM-12-A00

Features:

- 8", 12", 18" and 24" (20.3 cm, 30.5 cm, 45.7 cm and 61 cm) height profiles and custom lengths available
- Internal raceway for cable management
- Double sided profile allows for any application
- Holds up to 100 lbs (45 kg) flush to column and up to 50 lbs (23 kg) mounted 24" (61 cm) away
- 8" x 8" (20.3 cm x 20.3 cm) base plate, plus an additional backing plate for secure installation
- Two side raceway covers and two channel covers (field cut to desired lengths, white is standard)
- Clear anodized aluminum finish with optional colors

Height Profiles

8" (20.32 cm)
Part Number: CTM-08-A00

12" (30.98 cm)
Part Number: CTM-12-A00

18" (45.72 cm)
Part Number: CTM-18-A00

24" (60.96 cm)
Part Number: CTM-24-A00

Dual Channel Counter-Top Mounting Applications



Optional Colors



Table-Top Mounts



Part Number: TTM-12-450-A00

Features:

- 3", 5", 9", 12", and 16" (7.6 cm, 12.7 cm, 22.9 cm, 30.5 cm and 40.6 cm) height profiles
- Compatible with flat panel displays and patient monitors
- Includes base plate, plus an additional backing plate for secure installation
- 1¼" (3.18 cm) Diameter clear anodized aluminum pole
- Adjustable tilt head allows multiple viewing angles
- Holds up to 30 lbs (13.6 kg)
- Available in custom colors and lengths

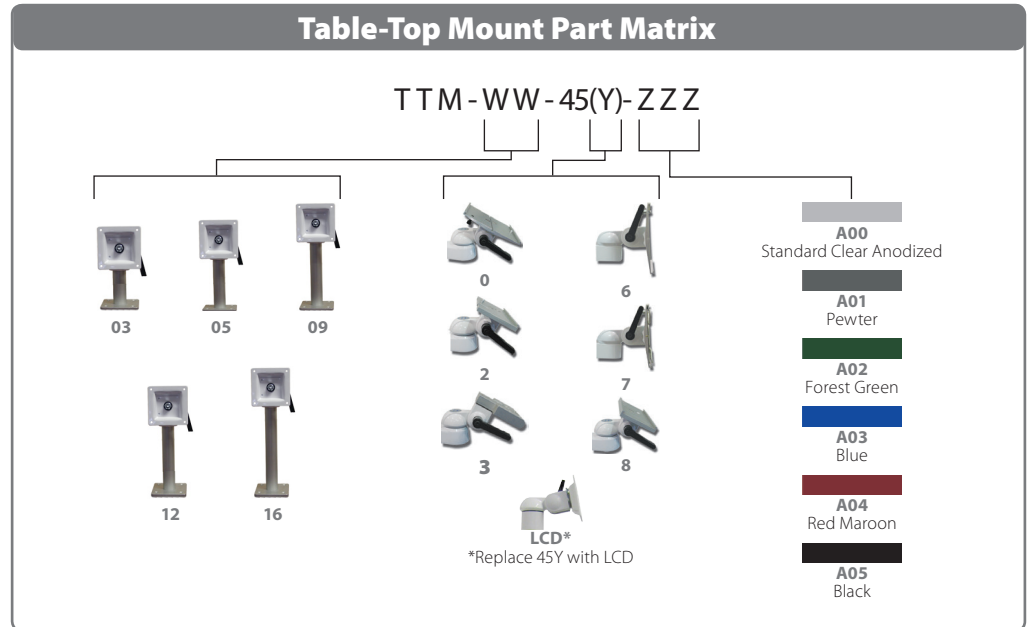


Height Profiles

- 3" (7.6 cm) Part Number: TTM-03-45Y-ZZZ*
- 5" (12.7 cm) Part Number: TTM-05-45Y-ZZZ*
- 9" (22.9 cm) Part Number: TTM-09-45Y-ZZZ*
- 12" (30.5 cm) Part Number: TTM-12-45Y-ZZZ*
- 16" (40.6 cm) Part Number: TTM-16-45Y-ZZZ*

**Use part matrix opposite to indicate appropriate monitor head and color*

Table-Top Mount Part Matrix



Please visit www.amico.com for all technical specifications, installation instructions, detailed AutoCAD drawings and more Mounting Solutions.



Distributed By:

