

# Equipment Rails

## ERS Rails and Adapters



### ERS Rails Features

- A cost effective alternative to the headwall systems
- Reduces clutter and increases organization to enhance productivity and patient care
- Ideal for rooms with limited space
- Largest selection of rail designs and accessories
- Suitable throughout the facility
- Easy to add to custom casework/cabinetry
- Provides a less clinical ambiance to the décor of the room
- Various configurations available to meet your acuity needs
- Scratch resistant
- Easy to clean
- Compatible with equipment rails from other manufacturers
- Available in a variety of surface treatment colors (standard is clear anodized aluminum)

### Adapter Features

- Adapters that are compatible with any rail system
- Easy to install and effortless to reposition
- Anodized Aluminum prevents scratches and is easy to clean
- Available in 2 different hole patterns
- Mounting options for a large variety of general room accessories

Make use of your medical rails and increase work flow productivity. Amico offers all the compatible rail adapters for any rail system. Our rail adapters can be customized to fit any common medical instrument making them universally compatible.

# Equipment Rails

## ERS Rails and Adapters



### Equipment Mounts



Direct Bracket Mount

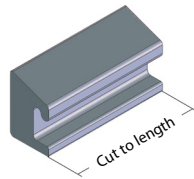
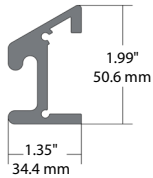


Extended Bracket Mount



Direct Wall Mount

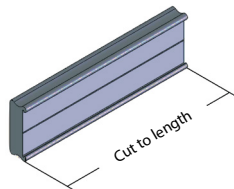
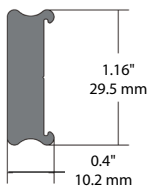
#### ARS - Horizontal Rail



- Integrated mounting plate
- Negative profile allows for ease of maintenance and infection control
- Designed for horizontal applications
- Available in a wide variety of lengths



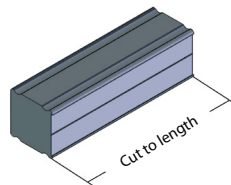
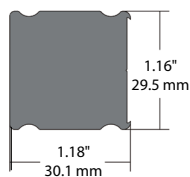
#### LRS - Light Duty Fairfield Rail



- Simple, functional and economic solution to suit the various needs within the patient care environment
- Slim profile ideal for adding to existing equipment
- Laminate insert allows for color customization
- Designed for horizontal applications
- Available in a wide variety of lengths



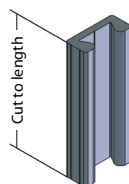
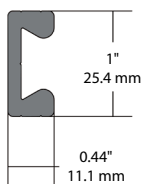
#### FRS - Heavy Duty Fairfield Rail



- Extended profile for superior support
- Can be fitted directly to the wall surface or paired with mounting hardware
- Laminate insert allows for color customization
- Designed for horizontal applications
- Available in a wide variety of lengths



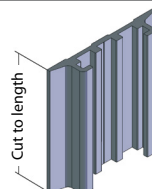
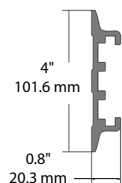
#### VRS - Vertical Rail



- Mounts flush to any surface
- Designed for vertical applications
- Can be used in conjunction with horizontal rails for a more efficient use of space
- Ideal for inlaying in cabinets/casework
- Laminate insert can be added for color accent



#### MRS - Monitor Rail System



- Typically used for mounting monitors
- Built to handle heavy vertical loads
- Also great for concealing cords and tubing
- Designed for vertical or horizontal applications
- Available in a wide variety of lengths
- Laminate insert can be added for color accent



# Equipment Rails

## ERS Rails and Adapters



### Rail Adapters & Pole Clamps



ATA-05



ATA-8-32

- Amico horizontal track adapter, compatible with Amico and Modular horizontal rail systems



DWA-05



DWA-8-32

- Amico direct to wall or SLIDE adapter used for mounting directly to a wall, or in to any vacuum slide



ETA-25-8-32



ETA-25-05

- Amico DIN track adapter used with 10 mm x 25 mm (0.39" x 0.98") European (DIN) rails



FTA-05



FTA-8-32

- Amico Fairfield compatible CAM action adapter with set screw tension lock for secure



VTA-05



VTA-8-32

- Amico vertical track adapter compatible with Amico and Modular vertical rail systems



MHT-05



MHT-8-32

- Amico monitor channel adapter which is compatible with horizontally or vertically mounted monitor channels

All "05" adapters include a 12.7 mm (0.5") hole for pole mounting.  
All "8-32" adapters include 2 – 8-32 holes 12.7 mm (0.5") apart spaced vertically.

# Equipment Rails

## ERS Rails and Adapters

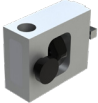


OHM-05

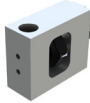


OHM-8-32

- Amico dovetail adapter compatible with Datex-Ohmeda/GE dovetail rail systems

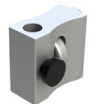


STA-05

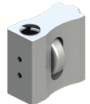


STA-8-32

- Amico vertical track adapter compatible with HSI vertical rail system



GTA-05



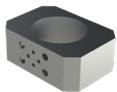
GTA-8-32

- Amico track adapter compatible with Hill-Rom vertical rail systems



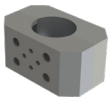
PC1-8-32

- Amico rotational pole clamp, compatible with DIN rails and poles from 12.7 mm – 38 mm (0.5" - 1.5") in diameter



PC2-8-32

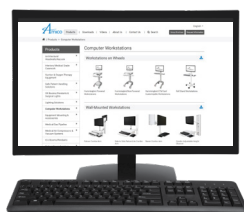
- Amico 50.8 mm (2") C clamp, compatible with poles 50.8 mm (2")



PC-125-8-32

- Amico 31.8 mm (1.25") C clamp, compatible with poles 31.8 mm (1.25")

Please visit [www.amico.com](http://www.amico.com) for all technical specifications, installation instructions, detailed AutoCAD drawings, and more Mounting Solutions.



Distributed By:

