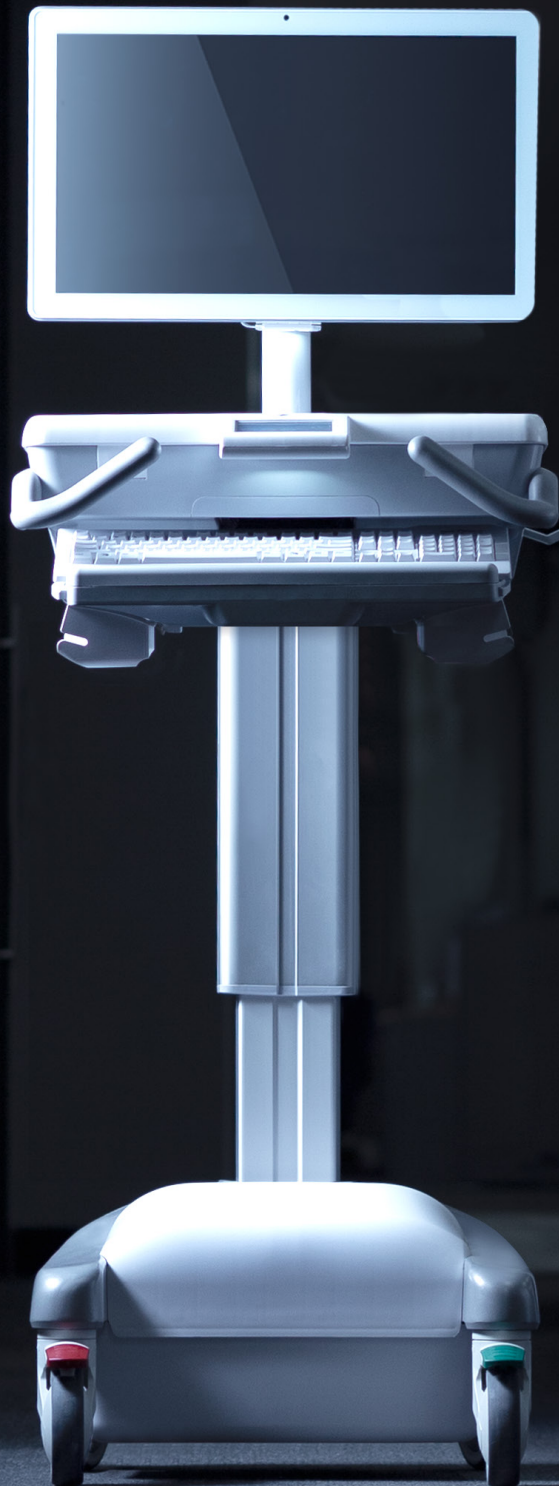




Hummingbird

Mobile Computer Workstations

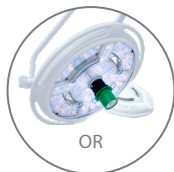
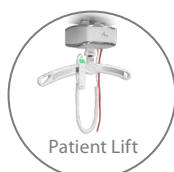
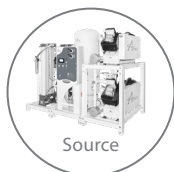
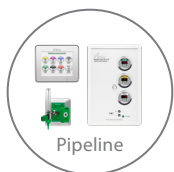


Amico



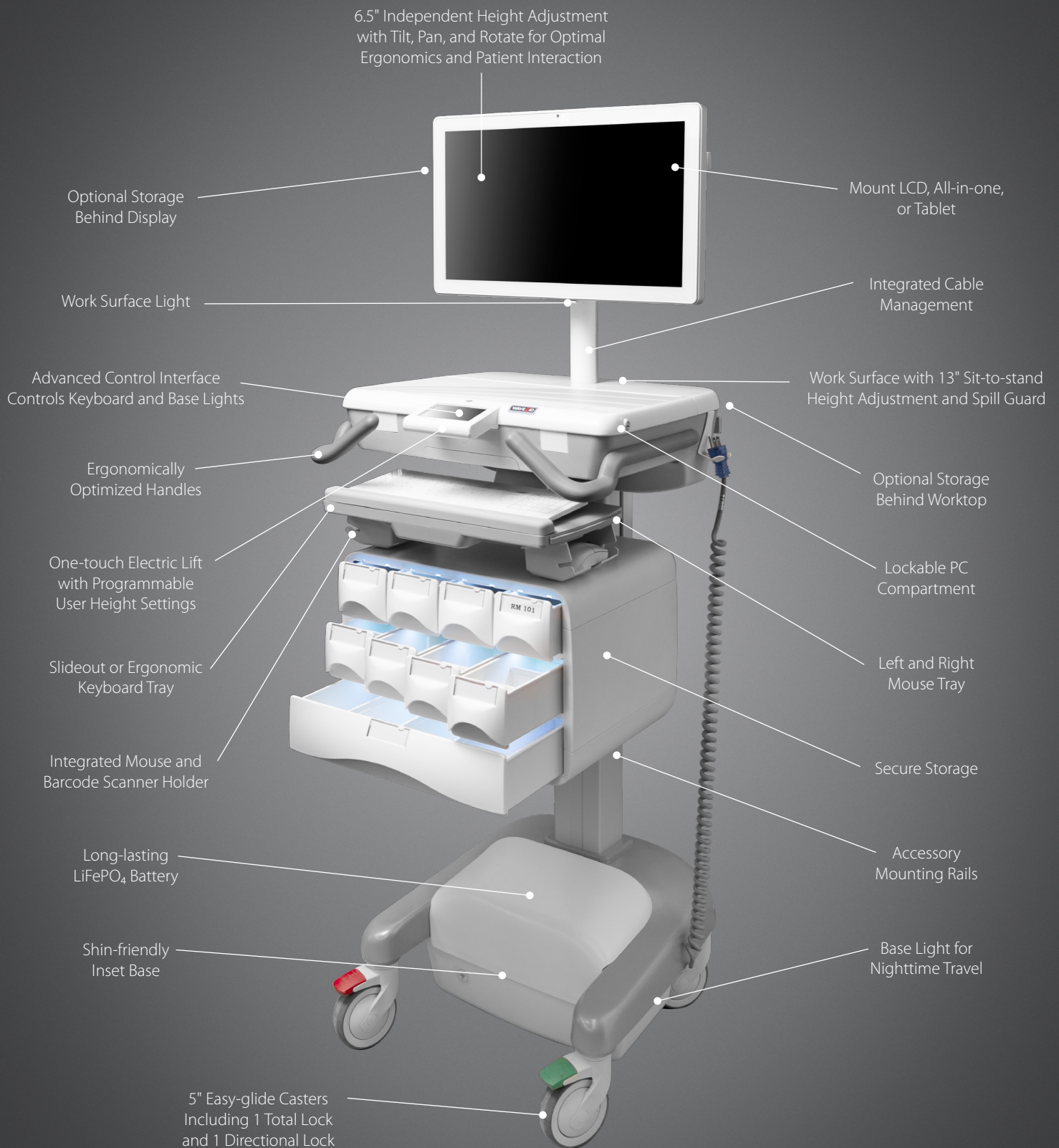
At Amico, we believe in improving healthcare for every stakeholder. The heroes in our story are Patients, Caregivers, Technicians, and Management – *they* are the leaders of our development process and the reason you find Amico innovations throughout the healthcare environment. *Our* expertise is in listening to them.







# Anatomy of the Hummingbird



**5**YEAR  
warranty



# Hummingbird Benefits

Amico's Hummingbird Mobile Computer Workstations facilitate access to patient medical records and medication at the point of care. Streamline workflows and processes for Caregivers, control cost, and enhance patient engagement and safety.

- Lightweight design, ergonomic handles, independent display height, and sit-to-stand adjustment provide the ultimate easy to move ergonomic workstation for enhanced caregiver efficiency
- Minimal footprint, easy-glide casters, and cart lights enable non-disruptive mobility, day and night
- Fully adjustable monitor and ergonomic keyboard tray adjust easily to enhance patient interaction at the bedside
- Maximal uptime of up to 18 hours with rapid charge LiFePO<sub>4</sub> batteries
- Network-based fleet management provides real-time monitoring and seamless integration with existing fleet
- Fully customizable to meet the precise specifications of the facility and ready for future hardware upgrades
- BirdsEye Lite Fleet Management Software for powered cart helps simplify monitoring battery status and enhances asset management







## Patients

### Elevated Healthcare

Facilitate patient-oriented engagement and improved communication while ensuring secure medication delivery at the bedside. Optimized patient interactions increase compliance to treatment plans, reduce return visits, and enhance the overall patient experience, resulting in improved outcomes and better HCAHPS scores for your facility.



Improved  
Communication



Enhanced Safety



Increased Treatment  
Compliance



Better Outcomes





## Caregivers

### Effortless Workflow

Reduce the number of action steps required for your practitioners. Our caregiver-designed, fast-charging, ergonomic mobile workstations provide access to patient records, medication, supplies, and imaging at the bedside. Empower your team with more time and more energy, enabling them to focus on patient care.



Increased Workflow  
Efficiency



Improved Charting and Medication  
Administration Accuracy



Less Strain



More Energy





## Technicians

### Peace of Mind

Hummingbird is crafted for maximal uptime and minimal maintenance. Oversized casters, impact resistance, and high travel visibility combine to reduce risk of damage while in use. Amico's BirdsEye Fleet Management software enables efficient monitoring and seamless integration with existing workstations. Backed by Amico virtual and live support, you're always in good hands.



Maximal Uptime



Minimal Maintenance



Easy Asset  
Management



Multi-level Support





## Management

### Productivity and Savings

Efficiency, reliability, and adaptability translate into long-term productivity, and savings across the facility. With Hummingbird as the next workstation on wheels in your fleet, you will reduce liability, increase practitioner productivity, and improve HCAHPS - a true cost-saving and revenue-positive solution.



Reduced Facility Liability



Better Patient Outcomes



Increased Caregiver Productivity



Superior Management and Integration



# Hummingbird Display Models

## LCD, All-in-one, and Tablet Powered Electric Lift



- 6.5" independent monitor height adjustment with 180° panning and rotation, and tilt, sit-to-stand worktop height adjustment, and optional ergonomic keyboard tray for caregiver comfort, ergonomics, and enhanced patient communication
- Easy to maneuver with ergonomic handles, 5" easy-glide casters and legroom
- Long-lasting LiFePO<sub>4</sub> battery
- Electric lift with programmable user height settings
- 3-point integrated lighting system for nighttime charting and travel
- Customizable storage and accessories with mounting locations behind display, behind worktop, and on column
- Optional key, combination, and digital locking storage drawers
- Optional RFID integration to worktop for fast and secure access to computer
- Network-based fleet management
- Ships assembled for rapid deployment

## LCD, All-in-one, and Tablet Powered Manual Lift



- 6.5" independent monitor height adjustment with 180° panning and rotation, and tilt, sit-to-stand worktop height adjustment, and optional ergonomic keyboard tray for caregiver comfort, ergonomics, and enhanced patient communication
- Easy to maneuver with ergonomic handles, 5" easy-glide casters and legroom
- Long-lasting LiFePO<sub>4</sub> battery
- Easy to use manual lift
- 3-point integrated lighting system for nighttime charting and travel
- Customizable storage and accessories with mounting locations behind display, behind worktop, and on column
- Optional key, combination, and digital locking storage drawers
- Optional RFID integration to worktop for fast and secure access to computer
- Network-based fleet management

## LCD, All-in-one, and Tablet Non-powered Manual Lift



- 6.5" independent monitor height adjustment with 180° panning and rotation, and tilt, sit-to-stand worktop height adjustment, and optional ergonomic keyboard tray for caregiver comfort, ergonomics, and enhanced patient communication
- Easy to maneuver with ergonomic handles, 5" easy-glide casters and legroom
- Plug-in power with internal outlets and cable management
- Easy to use manual lift
- Customizable storage and accessories with mounting locations behind display, behind worktop, and on column
- Optional key, combination, and digital locking storage drawers
- Optional RFID integration to worktop for fast and secure access to computer

## LITE - LCD, All-in-one, and Tablet Non-powered Manual Lift



- 6.5" independent monitor height adjustment with 180° panning and rotation, and tilt, sit-to-stand worktop height adjustment, and L/R mouse tray for caregiver comfort, ergonomics, and enhanced patient communication
- Lightweight workstation with 5" easy-glide casters and lots of legroom to reduce caregiver fatigue
- 2x integrated power supply mounts and cord holder for cable management
- Focused LED worktop light for night charting with minimal patient disruption
- Customizable storage and accessories with mounting locations behind display, behind worktop, and on column
- Ships with minimal assembly required, optimized to save you money on shipping (option to ship assembled)



# Hummingbird Laptop Models

## Laptop Powered Electric Lift



- Laptop display angle adjustment, sit-to-stand worktop height adjustment, and optional ergonomic keyboard tray for caregiver comfort, ergonomics, and enhanced patient communication
- Long-lasting LiFePO<sub>4</sub> battery
- Electric lift with programmable user height settings
- 3-point integrated lighting system for nighttime charting and travel
- Customizable storage and accessories with mounting locations behind worktop, and on column
- Optional key, combination, and digital locking storage drawers
- Optional RFID integration to worktop for fast and secure access to computer
- Network-based fleet management
- Easy to maneuver with ergonomic handles, 5" easy-glide casters and legroom
- Secure key-lock compartment accommodates common laptop sizes

## Laptop Powered Manual Lift



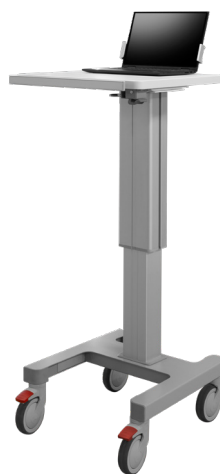
- Sit-to-stand, fully adjustable keyboard, 5" easy-glide casters
- Long-lasting LiFePO<sub>4</sub> battery
- Easy to use manual lift
- 3-point integrated lighting system for nighttime charting and travel
- Customizable storage and accessories with mounting locations behind worktop, and on column
- Optional key, combination, and digital locking storage drawers
- Optional RFID integration to worktop for fast and secure access to computer
- Network-based fleet management
- Easy to maneuver with ergonomic handles, 5" easy-glide casters and legroom

## Laptop Non-powered Manual Lift



- Sit-to-stand, fully adjustable keyboard, 5" easy-glide casters
- Plug-in power with internal outlets and cable management
- Easy to use manual lift
- Customizable storage and accessories with mounting locations behind worktop, and on column
- Optional key, combination, and digital locking storage drawers
- Optional RFID integration to worktop for fast and secure access to computer
- Easy to maneuver with ergonomic handles, 5" easy-glide casters and legroom

## LITE - Laptop with Security Bracket Non-powered Manual Lift



- Sit-to-stand worktop height adjustment, and L/R mouse tray for caregiver comfort and ergonomics
- Optional laptop security bracket
- Lightweight workstation with 5" easy-glide casters and lots of legroom to reduce caregiver fatigue
- 2x integrated power supply mounts and cord holder for cable management
- Focused LED worktop light for night charting with minimal patient disruption
- Customizable storage and accessories with mounting locations on the column
- Ships with minimal assembly required, optimized to save you money on shipping (optional ships assembled)



# Hummingbird SmartDrawers Models



## LCD, All-in-one, and Tablet Powered Electric Lift with SmartDrawers

- Drawer access control via advanced interface with options to unlock drawers individually or all together
- Secure drawer access to credentialed users with optional multi-factor authentication
- Auto-kick out, slam-lock drawer with drawer light makes reaching easy and quick
- Removeable drawers and dividers fit flexible workflow and storage needs
- 6.5" independent monitor height adjustment with 180° panning, rotation, and tilt, sit-to-stand worktop height adjustment, optional ergonomic keyboard tray for caregiver comfort, ergonomics, and enhanced patient communication
- Long-lasting LiFePO<sub>4</sub> battery and electric lift with programmable user height settings
- Easy to maneuver with ergonomic handles, 5" easy-glide casters, and legroom
- 3-point integrated lighting system for nighttime charting and travel
- Optional RFID integration to worktop for fast and secure access to computer
- Optional network-based fleet management



## Laptop Powered Electric Lift with SmartDrawers

- Drawer access control via advanced interface with options to unlock drawers individually or all together
- Secure drawer access to credentialed users with optional multi-factor authentication
- Auto-kick out, slam-lock drawer with drawer light makes reaching easy and quick
- Removeable drawers and dividers fit flexible workflow and storage needs
- Secure key-lock compartment accommodates common laptop sizes
- Laptop display angle adjustment, sit-to-stand worktop height adjustment, and optional ergonomic keyboard tray for caregiver comfort, ergonomics, and enhanced patient communication
- Long-lasting LiFePO<sub>4</sub> battery and electric lift with programmable user height settings
- Easy to maneuver with ergonomic handles, 5" easy-glide casters, and legroom
- 3-point integrated lighting system for nighttime charting and travel
- Optional RFID integration to worktop for fast and secure access to computer
- Optional network-based fleet management

# Hummingbird Compact Models

## Roll Stand

Amico's Roll Stand mobile computer workstations are compatible with a variety of devices and offer a sturdy base with an assortment of accessories that clamp right onto the pole for clinical flexibility.



## CTM

Amico's CTM mobile computer workstations are a non-powered, highly customizable mobile solution for health care applications. A variety of configurations make it ideal for health care IT applications, such as medical imaging and patient monitoring.





# Workflow

## Advanced Control Interface

Hummingbird's Advanced Control Interface helps caregivers use their mobile workstation more efficiently by providing them with simple touch controls right at their fingertips.

- Work with Gloves
- Control Cart Height
- Display Cart Status
- Store User Height Settings
- Operate Cart Lights
- Record Notes



## BirdsEye Fleet Management Software

BirdsEye Fleet Management software simplifies mobile workstation control, minimizes administration, and enhances asset management. Scalable from Standalone (on-client) to Network-connected to meet your facility's changing needs.

### Lite

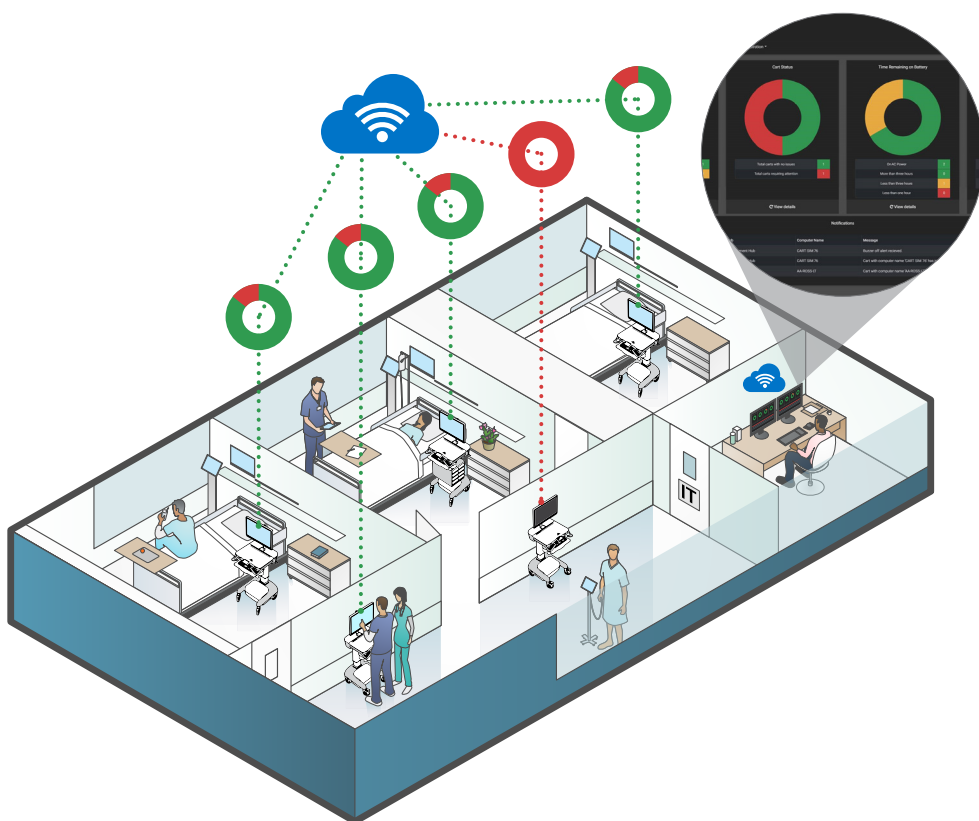
Standalone (on-client)  
critical alerts and  
battery status

### Connected

Standalone + Secure  
Network-based Fleet  
Management

### Connected+

Standalone + Secure  
Network-based Fleet  
Management + Analytics



# Workflow

Nurses **LOVE**  
how **easy** it is to  
maneuver the  
Hummingbird!



## Ergonomics

Hummingbird is equipped with fast and easy ergonomic adjustments enabling the caregiver to customize the cart to their moment-to-moment needs.

- 6.5" independent screen height adjustment with tilt, pan, and rotate so displays can be seen, shared, and moved out of the way for safe traveling from patient to patient
- 13" fast worktop height adjustment for quick changes from sitting to standing
- Ergonomic handles optimally oriented based on feedback from nurses
- Inset base that protects your shins while you're on the move
- Oversized easy-glide casters that make the cart move effortlessly, reducing strain and fatigue for caregivers



## Maximal Uptime

Three fast-charge battery options make sure your carts keep up with the workflows of your caregivers, supporting increased patient interactions, accurate charting and medication dispensing, and an overall more efficient workflow.

- 6, 12, or 18-hour rated batteries
- Fast-charge
- Long-lasting 6-10 year lifespan



# Customization

Every facility has unique clinical and workflow needs that can vary from unit to unit. Amico's Hummingbird carts offer unmatched customizability with five integrated accessory mounting locations. Ask your sales rep for customization and accessory options by model.



## VESA Mount

Add-on mount for thin-client and ergonomic handles.



## Perch Accessory Rail

Accessory and storage mounting behind your display for your practitioners' most frequently-used items.



## Bump Accessory Rail

Accessory and storage mounting behind the worktop to place equipment close at hand.



## Worktop

Add a custom-branded label or integrate RFID technology right into the work surface.



## Vertical Rail Column

Storage beneath the work surface for placing drawers and other large items.



## SmartDrawers

Storage available in a range of sizes and configurations with a variety of security options, including SmartDrawers secure medication dispensing system.



Amico Accessories Inc. | 85 Fulton Way, Richmond Hill, ON L4B 2N4, Canada  
Toll Free Tel: 1.877.264.2697 | Tel: 905.763.7778 | Fax: 905.763.8587  
Email: [info@amico-accessories.com](mailto:info@amico-accessories.com) | [www.amico.com](http://www.amico.com)

Represented By: