

# Installation Instructions

## 110V ~ 220V Voltage Converter



**Amico**

# Preface

## Important, Please Read Carefully

Thank you for your purchase with Amico.

This unit is designed for long lasting performance, providing the end user complies with assembly and maintenance procedures. This Instruction Manual is your guide to ensure that you get the best performance out of the equipment. Amico Accessories Inc. is not responsible for any damage as a result of (but not limited to) abuse and other problems that may be a direct or indirect result of failure to comply with the instructions provided in this manual.

## Please Note these Key Words and Symbols



**WARNING:** Steps where extra care should be taken to prevent injuries and damage.



**NOTE:** Steps that point out helpful information.

## Medical Facility Responsibilities

Preventive maintenance checks must be performed regularly to maintain the quality and performance of this product. Any parts that may be broken, missing, worn, distorted, or contaminated in any way should not be used and all affected parts should be replaced immediately. Should the necessity of any repair be suspected; please contact your local distributor or call 877-264-2697.

# Table of Contents


<b>Section 1: Specifications</b>	<b>4</b>
<b>Section 2: Installation Preparation</b>	<b>4</b>
Installation Tool Requirements	9
<b>Section 3: Installation</b>	<b>5-8</b>
<b>Section 4: Troubleshooting, Preventative Maintenance, Storage, &amp; Cleaning</b>	<b>9-10</b>
Troubleshooting	9
Storage	9
Preventive Maintenance	9
Cleaning	10
<b>Warranty Policy</b>	<b>11</b>


# Section 1: Specifications


Maximum power: 180 watts  
Input: 100 - 120V  
Output: 220 - 240V  
Frequency: 50/60Hz  
Product size: 8.5" W x 6.0" D x 2.1" H (215 mm W x 153 mm D x 52 mm H) excluding cord  
Product weight: 4 lbs (1.8 kg)

# Section 2: Installation Preparation

## Installation Tool Requirements

- 

**NOTE:** Please ensure that your contents match the list as outlined below. If not, please contact Amico Accessories Inc. at 1-877-264-2697.
- 

**WARNING:** It is the installer’s responsibility to ensure all components are properly assembled and installed using the provided instruction manual.
- 

**WARNING:** Always use locks on casters when equipment is not in use to prevent unwanted movement. The list below includes all parts required for installation. Please check the contents of your package to ensure all parts are included. If any hardware or parts are missing, please contact Amico Accessories Inc.

The pictures below show the box contents. Please note the pictures are for reference only. Content or layout may vary depending on model selection.



Manufacturer Part Number	Part Description	Quantity
R-HMA-VC-U110220	UMI power convertor	1
R-HMW-AC-PWR-BAR-UNV-F	Power cord	1
X-HMW-VC-UMI-CAP	UMI voltage converter standoff - HMW	4
X-HMW-WT-MBASM-RS-CAP	Reset switch cap	2
H-DUAL-LOCK-CN	Dual lock square	16

## Section 3: Installation



**WARNING:** The following steps must be performed by authorized personnel.



**WARNING:** The battery compartment should be accessed by Amico approved service personnel only. Unauthorized access could result in injury or damage to the power system.



**WARNING:** Risk of explosion if the battery is operated incorrectly.



**WARNING:** Ensure that the key is turned counterclockwise before attempting to close the worksurface. Failure to do so could lead to damage to the worksurface and/or the locking mechanism.

1. Open the battery compartment cover by placing the magnetic key to the designated spot and pull up the cover (Figures 1 and 2). See Hummingbird Cart User Manual for details.



Figure 1



Figure 2

2. Disconnect the yellow Anderson 6331G8 connector. (Figures 3 and 4)



Figure 3

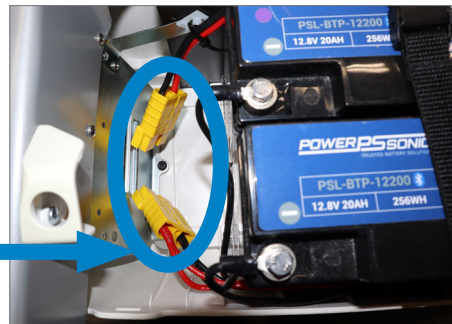


Figure 4

3. Unlock and flip open the work top to access the interior of the main bin. See Hummingbird Cart User Manual for details.

## Section 3: Installation

4. Unplug the C13 connector from the power bar. **(Figures 5 and 6)**

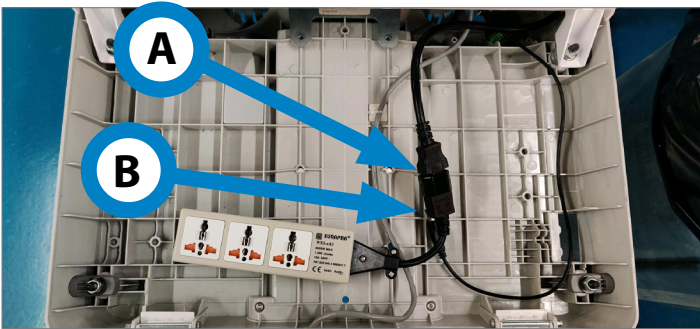


Figure 5

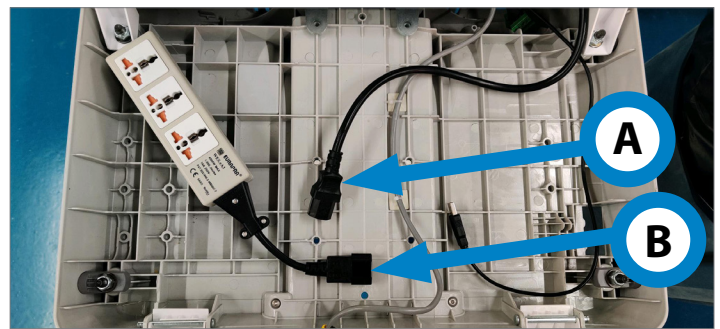


Figure 6

5. Plug the C13 connector into the Voltage Converter. **(Figure 7)**



Figure 7

6. Insert the main bin standoff caps into the slot into the work top. **(Figures 8 and 9)**

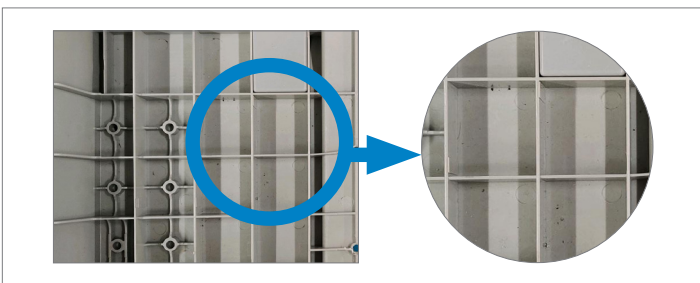


Figure 8

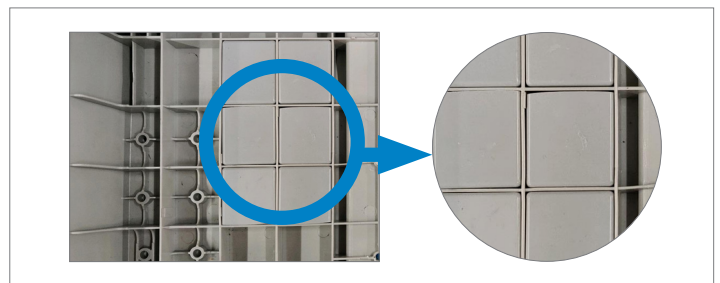


Figure 9

7. Tape the dual lock squares onto the main bin standoff caps. **(Figures 10 and 11)**



Figure 10



Figure 11



## Section 3: Installation

8. Align the dual lock squares on the bottom of the Voltage Converter with the dual lock in the main bin. **(Figure 12)** Put the Voltage Converter in a position as close as possible to the top **(Figure 12)** and press firmly to engage the dual lock.



Figure 12

9. Turn on the power by pressing the switch on the back of the converter. **(Figures 13 and 14)**



Figure 13



Figure 14

10. Replace the adaptor cable on the universal power bar. **(Figures 15 and 16)**

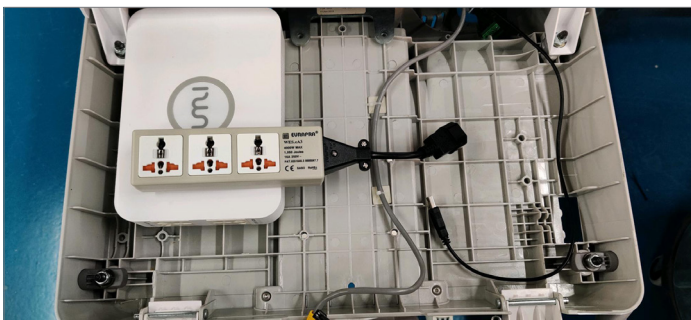


Figure 15



Figure 16

## Section 3: Installation

11. Estimate the position of the power bar. Put the dual lock on the side of the universal power bar. **(Figure 17)**



Figure 17

12. Put the universal power bar in position and press firmly to engage the dual lock.

13. Connect the power bar. **(Figure 18)**



Figure 18

14. Connect the yellow Anderson 6331G8 connector in the battery compartment. **(Figure 19 and 20)**

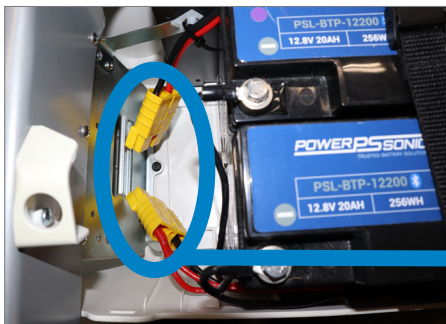


Figure 19

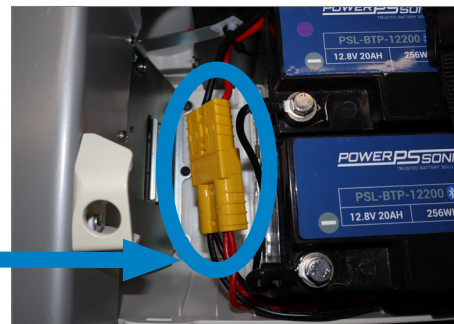


Figure 20

15. Place the battery compartment cover back and lock the compartment.



## Section 4: Troubleshooting, Preventative Maintenance, Storage, and Cleaning

### Troubleshooting

Symptom	Possible Cause	Solution
No voltage output while the indicator light is not on	Input power cord is not plugged in	Plug in the power cord
	Input power cord is damaged	Change to a new power cord
	Power switch is not turned on	Turn on the switch
	Tube fuse is damaged	Replace with a new but same type tube fuse
No voltage output while the indicator light is on	Power cord of the appliance isn't plugged in	Plug in the power cord
	Output socket is damaged	Send the product back to the original manufacturer to replace the socket
	Transformer overheating protection	The power will be automatically restored after half an hour when transformer cools down
The body shell becomes hot when using for a while The socket has no output voltage	The power of the appliance exceeds the rated power of the transformer	Change for a higher rated power transformer

### Storage

Do not place the transformer in any damp place or position where it may be dripped on. It should be stored in a ventilated and dry place.

### Preventive Maintenance



**WARNING:** The intervals shown are recommended. Maintenance schedules should be more frequent for higher use areas.

It is recommended that once every month connections and components be visually inspected for signs of product wear and tear or damage. Check the product for looseness in the mount or orientation, and ensure the power cord and power bar are secured in the main bin.

## Section 4: Troubleshooting, Preventative Maintenance, Storage, and Cleaning

### Cleaning

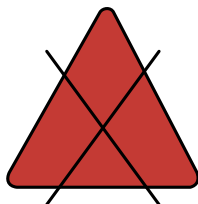


**WARNING:** The cleaning chemicals and methods below are not meant for controlling any infections. It shall be the responsibility of the hospital or the hospital's infection control officer to sanitize the equipment.



**WARNING:** Please do not spray any chemicals directly onto the Voltage Converter. Apply onto a soft cloth and wipe clean to prevent chemicals from getting into the internal components of the Voltage Converter.

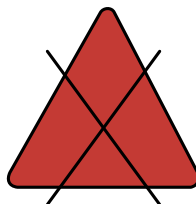
The mounting assembly may be cleaned with most mild, non-abrasive solutions commonly used in the hospital environment (e.g. diluted bleach, ammonia, or alcohol solutions). The surface finish will be permanently damaged by strong chemicals and solvents such as acetone and trichloroethylene. Steel wool or other abrasive materials should never be used. Damage caused by the use of unapproved substances or processes will not be warranted. It is recommended that you test any cleaning solution on a small area of the Voltage Converter that is not visible to verify compatibility. Never submerge the Voltage Converter and do not allow liquids to enter it. Wipe any cleaning agents off of the Voltage Converter immediately using a water-dampened cloth. Dry the Voltage Converter thoroughly after.



**Acetone**

#### **No Acetone**

Acetone is a colorless, mobile, flammable liquid



**Trichloroethylene**

#### **No Trichloroethylene**

Trichloroethylene is a chlorinated hydrocarbon commonly used as an industrial solvent

# Warranty Policy

Amico Accessories Inc. warrants all mounting accessories to be free from defects in material and workmanship for a period of twelve (12) months from the date of shipment. Within this period Amico Accessories Inc. will repair or replace any part which is proven to be defective.

This warranty is valid only when the product has been properly installed according to Amico Accessories Inc. specifications, used in a normal manner and serviced according to factory recommendations. It does not cover products that are not manufactured by Amico Accessories Inc. It does not cover failures due to damage which occurs in shipments or failures which result from accidents, misuse, abuse, neglect, mishandling, alteration, misapplication or damage that may be attributable to acts of God.

Amico Accessories Inc. shall not be liable for incidental or consequential damages resulting from use of equipment.

All claims for warranty must first be approved by Amico Accessories Inc. A valid Return Goods Authorization (RGA) number must be obtained from Amico Accessories Inc. prior to commencement of any service work. Warranty work, which has not been pre-authorized by Amico Accessories Inc., will not be reimbursed.

## **AMICO ACCESSORIES INC. DOES NOT HONOR VERBAL STATEMENTS CONCERNING THE WARRANTY.**

The distributor and/or dealer are not sanctioned to create verbal warranties about the product described in this agreement. Any statements will not be honored or be made part of the agreement of sale. This document is the final complete and exclusive terms of the agreement.

## **THIS WARRANTY IS INCLUSIVE AND REPLACES ALL OTHER WARRANTIES.**

Amico Accessories Inc. shall not, under any circumstances be liable for incidental or consequential damages including, but not limited to, profit, loss of sales or injuries to person(s) or property. Correction of noncompliance as noted above will result in completion of all liabilities of Amico Accessories Inc., whether based on agreement, neglect or changed materials, designs or specifications without notice.

All claims for warranty must first be approved by Amico Accessories Inc. Service Department: [accessories@amico.com](mailto:accessories@amico.com) or 1.877.264.2697. A valid Return Goods Authorization number must be obtained from Amico Accessories Inc. prior to commencement of any warranty claim.

[www.amico.com](http://www.amico.com)

Amico Accessories Inc. | 85 Fulton Way, Richmond Hill, ON L4B 2N4, Canada  
Toll Free Tel: 1.877.264.2697 | Tel: 905.763.7778 | Fax: 905.763.8587  
Email: [info@amico-accessories.com](mailto:info@amico-accessories.com) | [www.amico.com](http://www.amico.com)