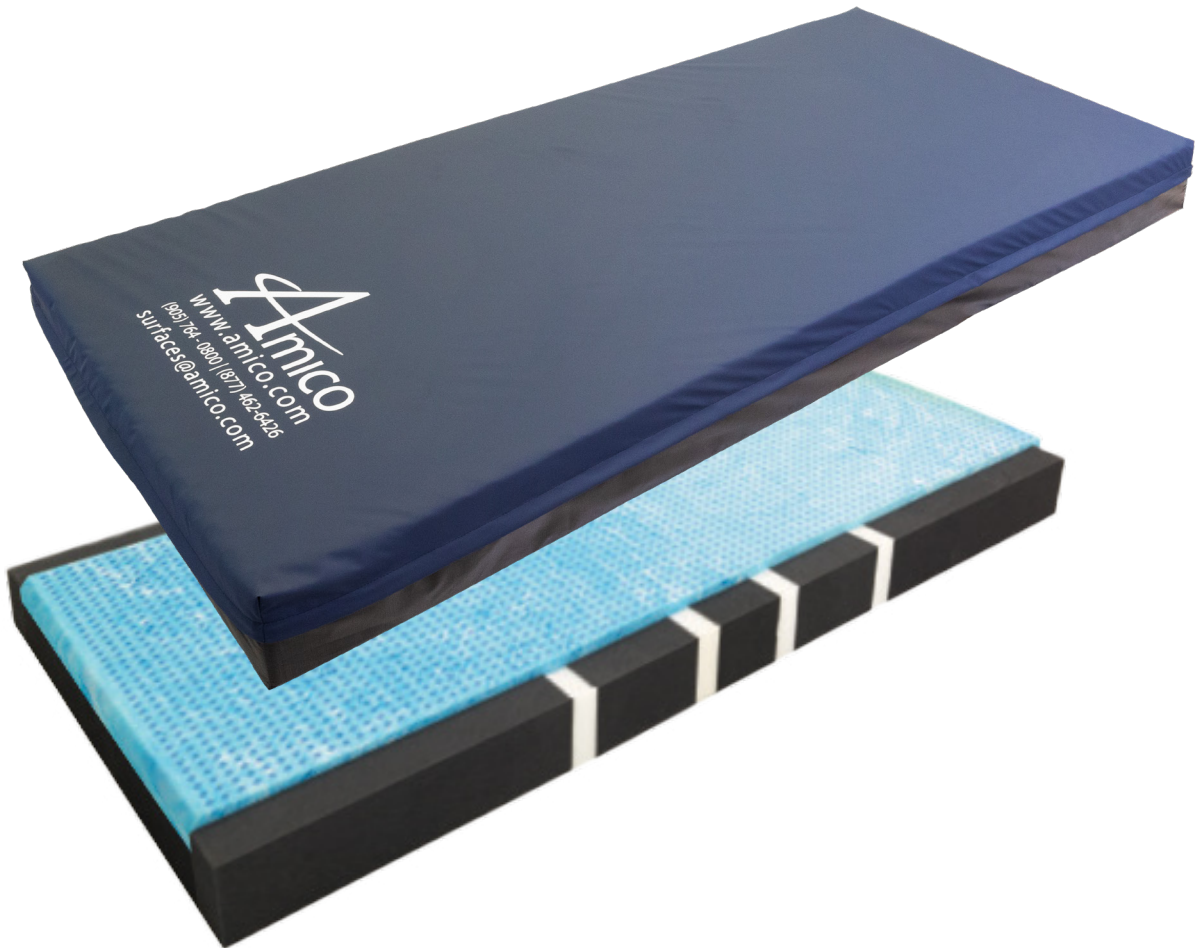


Emily Care Series III

Non-Powered Mattress

for Moderate to High Risk Patients



Key Features & Benefits:

- Multi-layered and zoned polyurethane foam construction improves pressure distribution
- High density foam offers full body support
- Gel infused Visco elastic memory foam topper design to redistribute pressure
- Topper is ventilated to improve air circulation and reduce heat build up
- 4-way stretch cover is fluid resistant, fire retardant, antifungal and passes antimicrobial test AATCC 30-2004
- Fire barrier sock passes 16 CFR Part 1633
- High density rails increase edge support and provides a stable perimeter
- Flex points enable smooth gatching of sleep surface while in various Fowler positions

Technical Specifications



Part Numbers

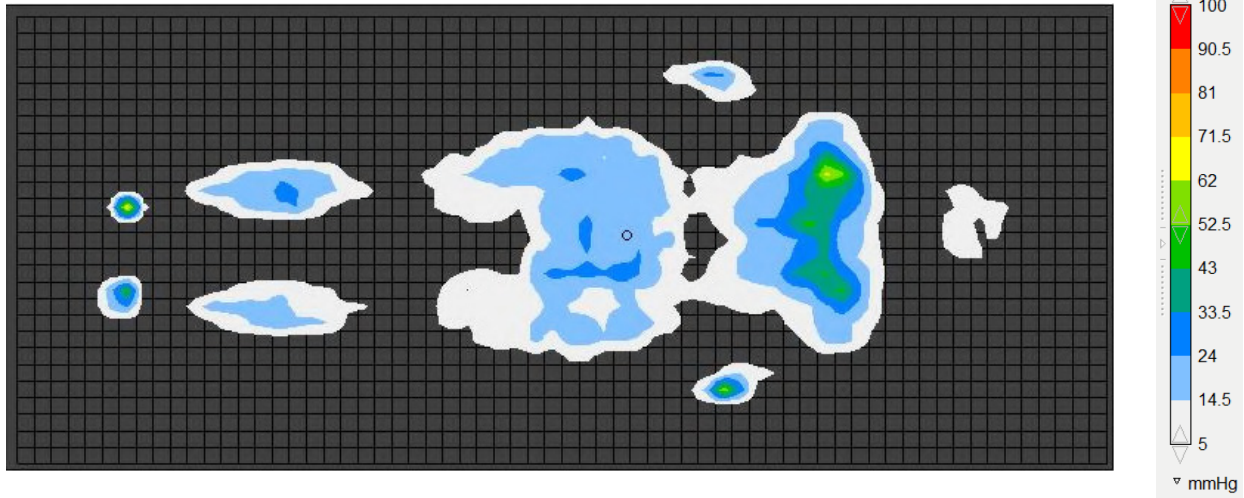
80" x 35" x 6"

M-THEA-WL003-80356

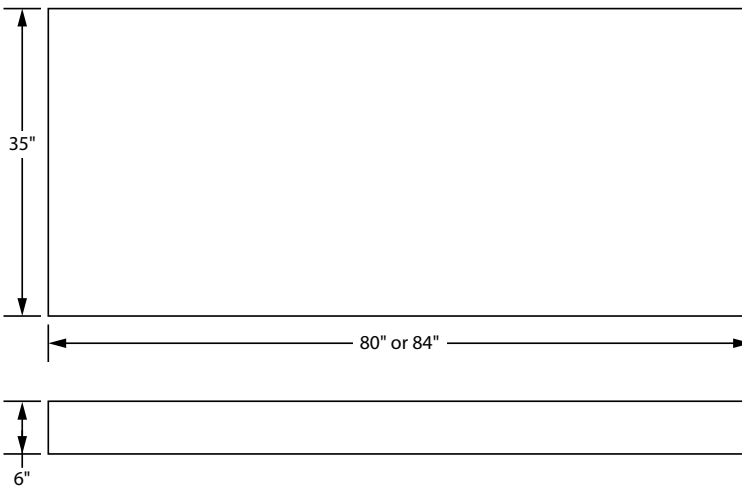
84" x 35" x 6"

M-THEA-WL003-84356

Pressure Mapping



Dimensions



*Custom sizes are available upon request



AC-400C



AC-200C

Amico Beds Corporation reserves the right to change product specifications without notice.

