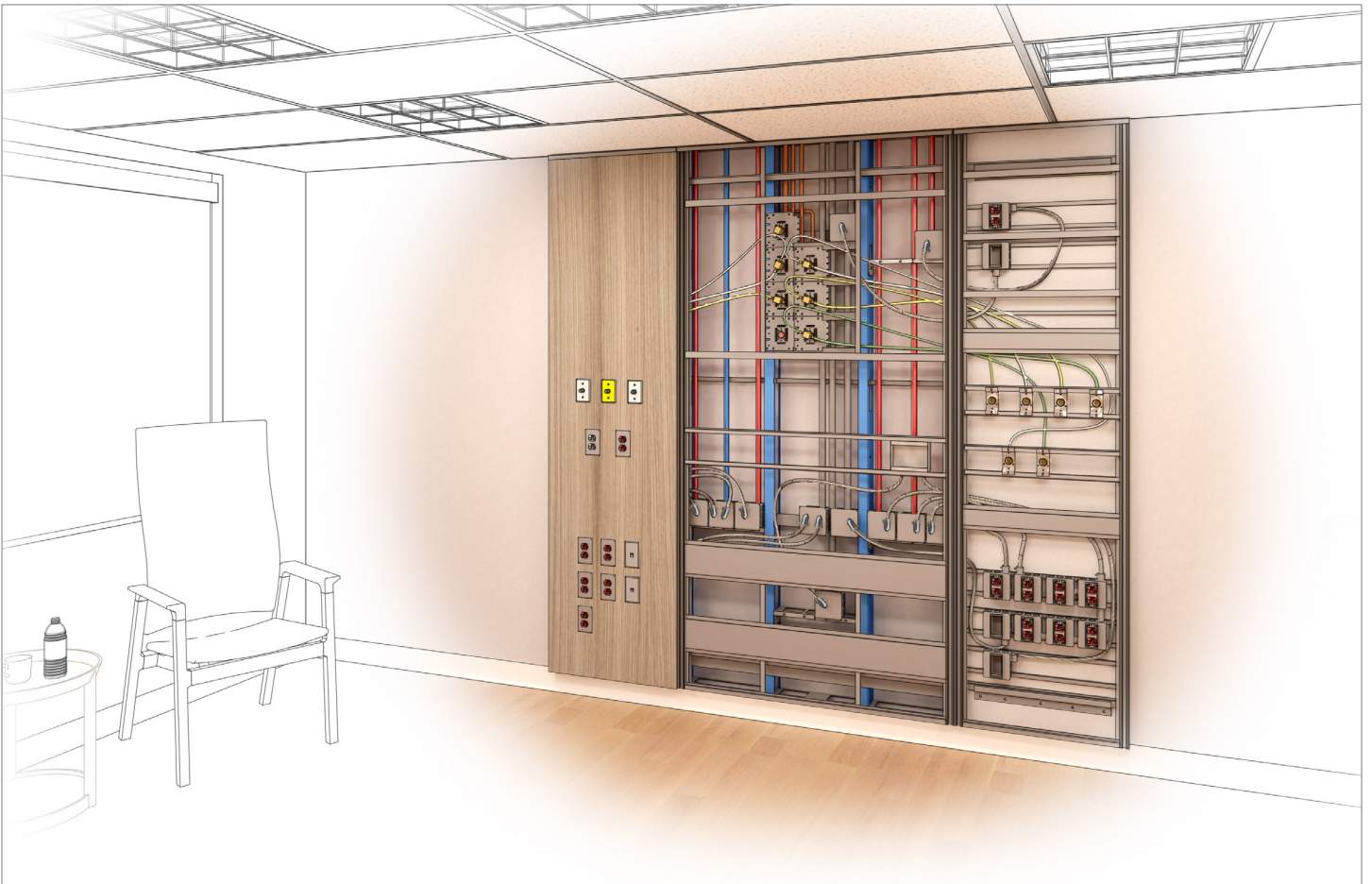


Installation Instructions

NuLook FlexWall - Adding Services



Amico


User Responsibility


The installation instructions provided are for Amico standard products. Slight modification to the installation instructions may be required. The product shipped to the job site may not be exactly as shown on the installation drawings. See additional sheets for project specifics where required.


IMPORTANT: PLEASE READ CAREFULLY PRIOR TO START

- Review and understand all instructions before commencing work.
- Local building codes should be followed.

Please Note These Keywords and Symbols:

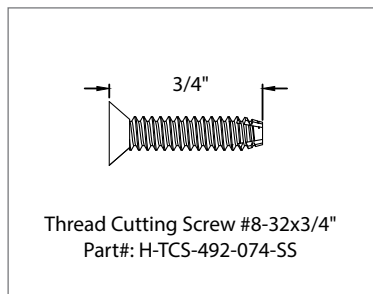
 **WARNING:** Steps where extra care should be taken to prevent injuries and damage.

 **NOTE:** Steps that point out helpful information.

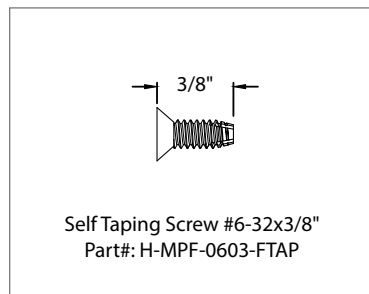
 **IMPORTANT:** Be sure to observe this instruction.

Hardware Provided by Amico

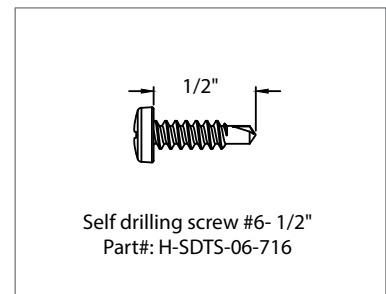
Hardware 1



Hardware 2



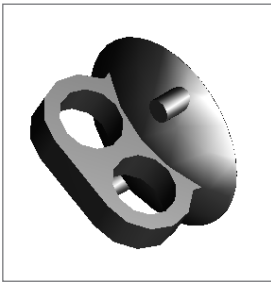
Hardware 3



Panel Removal/Handling

Step 1 - Panel Removal and Handling

1. Use the provided suction cup(s) to remove the panels. Start by removing the panel(s) on the middle frame, followed by the panels on the right and left frames. Handle the panels carefully to avoid damage.



Part#: W-X-LIFTER-0475

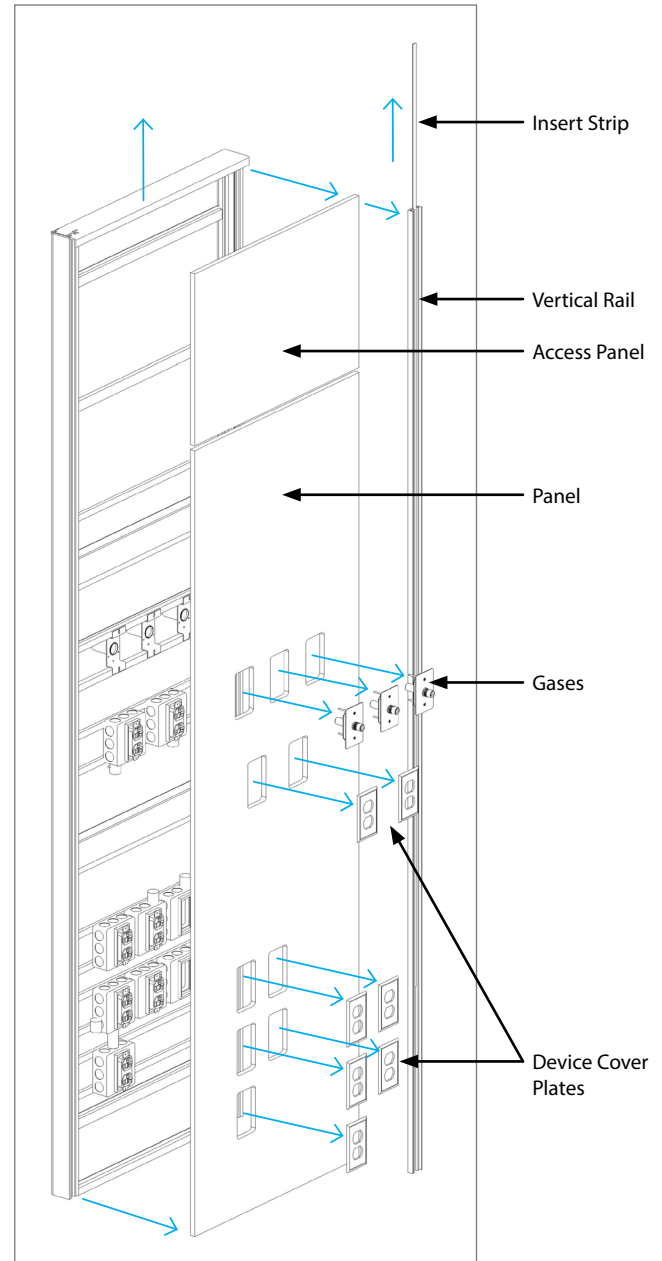
2. Remove:

- Vertical Rails
- Top Plate
- Insert Strip
- Screws

i NOTE: Depending on the unit being modified, some parts mentioned above may not be part of the assembly.

3. Remove device cover plates and gases.
4. Remove panels using the provided suction cup.

Figure 1



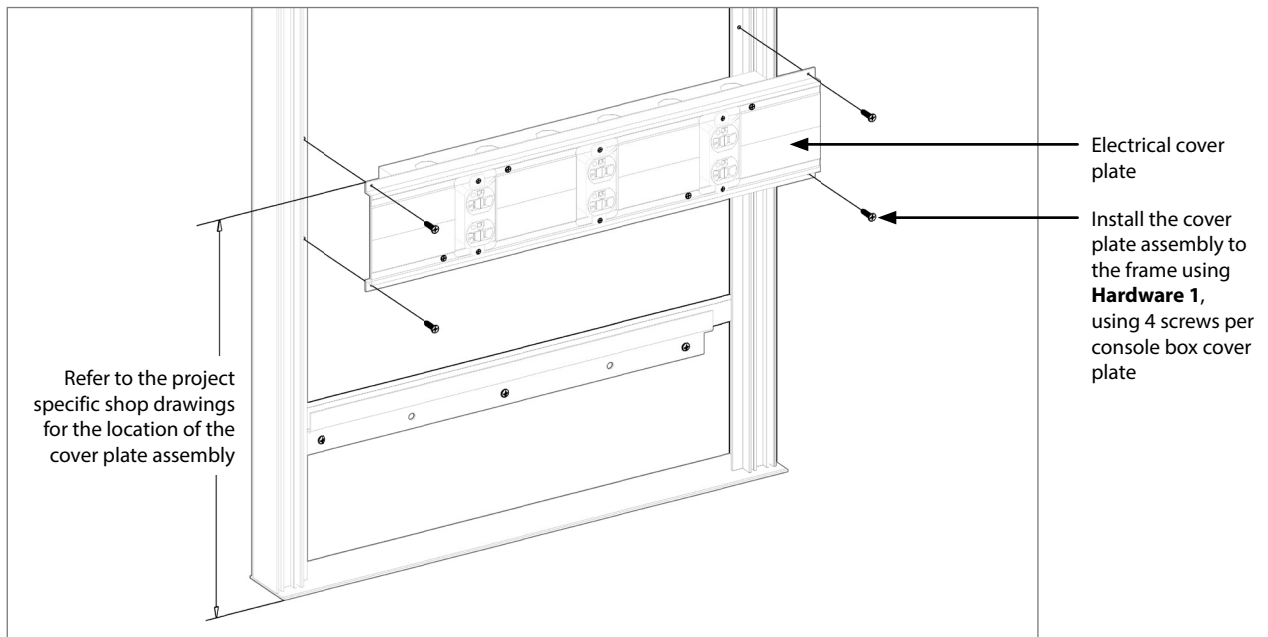
! WARNING:

- Stack panels face to face to prevent damage.
- Keep panels as flat as possible when handling or storing.
- Do not drag panels on other panels in order to prevent scratch or scuff.
- Panels must be stored on a dry surface (never directly on the floor or directly on concrete). It is desirable to keep the panels in a controlled environment where the HVAC system is operating.

Step 2 - Electrical Services Installation

1. (If applicable) Uninstall the electrical assembly by removing the pipe connector from the console box and removing the front electrical cover plate from the frame.
2. Refer to the height indicated in the shop drawing to measure and mark the location of the new electrical assembly.
3. Measure and drill the mounting holes on the frame.
4. Install the new electrical assembly to the frame through pre-drilled holes using hardware provided by Amico (**Hardware 1**) using 4 screws per console box cover plate. Attach the conduit to the console box as per shop drawing.

Figure 2



Continue the installation by choosing the appropriate method:

Option A:

Services terminated at the FlexWall Engine rough-in

- 5A. Bring the flex conduits to the existing electrical device boxes on the Engine by passing them through the opening between the frames.
- 6A. Pull wires through the Engine conduits to the termination box and install cover plates over the box.

i NOTE: If applicable, remove flex from cover plate, pull the flex conduit to desired electrical device boxes. Reinstall the cover plate.

Option B:

Services terminated at the ceiling

- 5B. Connect conduit to the termination box/ pipe from the main source.
- 6B. Pull wires through the pipes.

Step 3 - Medical Gas Installation

Continue the installation by choosing the appropriate method:

Option A:

Adding medical gas to an existing gas bracket

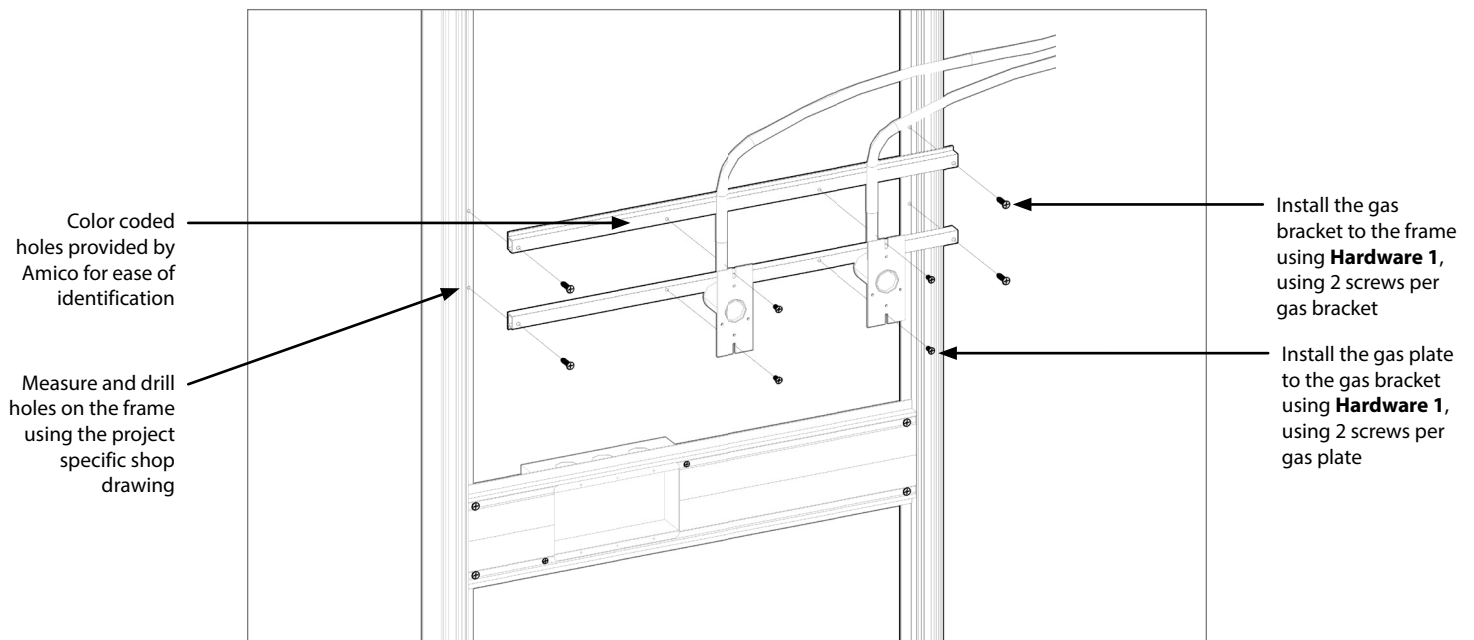
- 1A. Refer to the height indicated in the shop drawing to measure and mark the location of the medical gas on an existing gas bracket.
- 2A. Drill the mounting holes on an existing gas bracket.
- 3A. Install the gas plate to the gas bracket through pre-drilled holes using hardware provided by Amico (**Hardware 2**) using 2 screws per gas plate.
- 4A. Connect the medical gases to the FlexWall Engine.

Option B:

Adding medical gas to a new gas bracket

- 1B. Refer to the height indicated in the shop drawing to measure and mark the location of the gas bracket onto the frame.
- 2B. Drill the mounting holes on the frame.
- 3B. Install the gas bracket to the frame through pre-drilled holes using hardware provided by Amico (**Hardware 1**) using 4 screws per gas bracket assembly.
- 4B. Refer to the new shop drawings for the proper location of the gas plates (**Hardware 2**).
- 5B. Connect the medical gases to the FlexWall Engine by passing them through the opening between the frames.

Figure 3



Installation

- i NOTE:** Hose Assembly ends have gas-specific adapters meant to plug into the FlexWall Engine. Please refer to the Engine drawing in the NuLook Flexwall installation instructions (page 11) for Labeling Guidelines.
- i NOTE:** Medical gas hoses are terminated as per shop drawings.
- i NOTE:** The Rough-in Assemblies can be pressure tested up to a maximum of 200 psi without the Latch-valve Assembly attached to it.
- ! WARNING:** Do not pressure test the system over 100 psi [690 kpa] if the Latch-valve Assemblies and Hose Assemblies have been installed.
- ! WARNING:** To prevent over tightening, use manual tools to connect the medical gas adapters onto the engine.
- ! WARNING:** Orient and secure gas hoses in the manner shown in **Figure 4a** with the hoses coming from above the gas outlets. Avoid creating a "valley" with the hose (i.e., a "U" shape as shown in **Figure 4b**).

Figure 4a

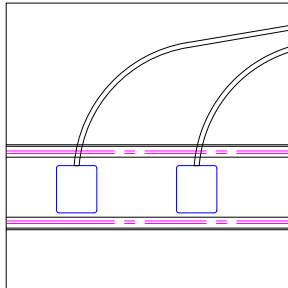
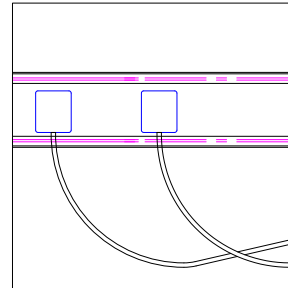


Figure 4b



Step 4 - Single Gang Box Installation on a Gas Bracket

Continue the installation by choosing the appropriate method:

Option A:

Single gang box installation on an existing gas bracket

- 1A. Refer to the location indicated in the shop drawing to measure and mark the location of the single gang box.
- 2A. Install the gang box (**Hardware 3**).
- 3A. Install these items:
 - New panels
 - Devices and cover plates
 - Rails (If applicable)

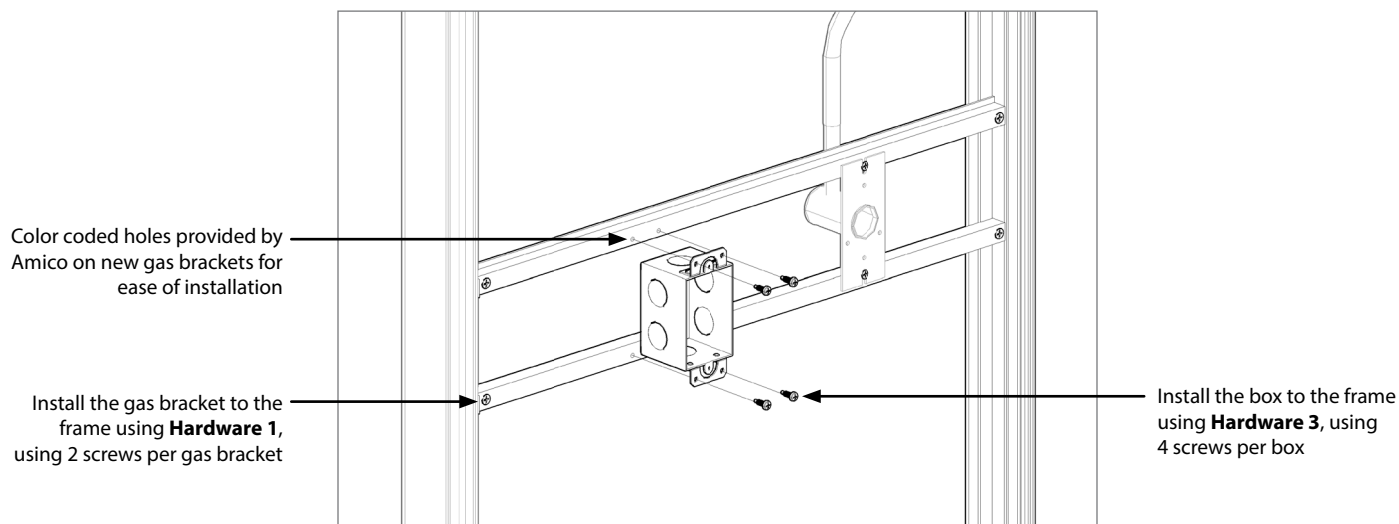
Option B:

Single gang box installation on a new gas bracket

- 1B. Install the gas brackets following step 1A and 2A of the Medical Gas Installation on page 4.
- 2B. Refer to the new shop drawings for the proper location of the single gang box. Install it onto the gas bracket through the color coded holes (**Hardware 3**).
- 3B. Connect the box to the main source as per shop drawing.
- 4B. Install these items:
 - New panels
 - Devices and cover plates
 - Rails (If applicable)

Installation

Figure 5



! IMPORTANT: Install the vertical rails onto the frames using the same hardware removed from the rail in **Step 1** (page 3). Reinsert the Vinyl Strip into the rail to cover the screws.

! IMPORTANT: Do not overtighten the medgas and electrical cover plates.

www.amico.com

Amico Corporation | 85 Fulton Way, Richmond Hill, ON L4B 2N4, Canada
600 Prime Place, Hauppauge, NY 11788, USA
Toll Free Tel: 1.877.462.6426 | Tel: 905.764.0800 | Fax: 905.764.0862
Email: info@amico.com | www.amico.com