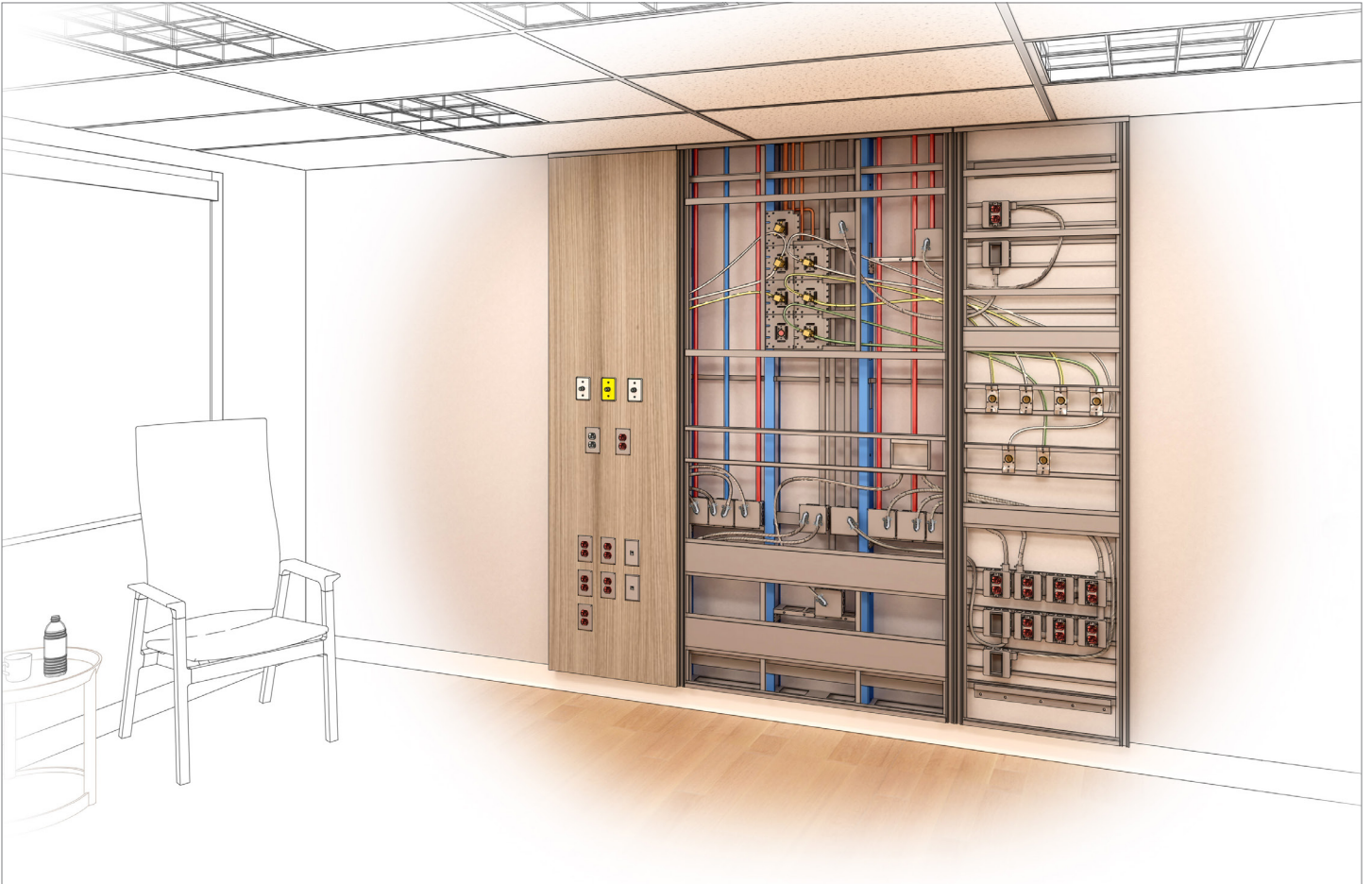


Installation Instructions

NuLook FlexWall



Amico

User Responsibility


The installation instructions provided are for the Amico standard products. Slight modifications to the installations may be required. The product shipped to the job site may not be exactly as shown on the installation drawings. See additional sheets for project specifics where required.


IMPORTANT: PLEASE READ CAREFULLY PRIOR TO START


- Review and understand all instructions before commencing work.
- Installation of this Prefabricated System should conform to the local building codes.

All on-site preparations must be done prior to the delivery of the Prefabricated System. Please contact Amico to confirm and review all information listed below. Failing to do so may result in discrepancies/misalignments during installation.

Please Note These Keywords and Symbols:

 **WARNING:** Steps where extra care should be taken to prevent injuries and damage.


 **NOTE:** Steps that point out helpful information.


 **IMPORTANT:** Be sure to observe this instruction.

Preparation Before Installation


Installation / Testing:


Testing of the FlexWall Systems shall be performed according to NFPA 99.

 **NOTE:** The "Rough-in Assemblies" can be pressure tested up to a maximum of 200 psi without the "Latch-valve Assembly" attached to it.

 **WARNING:** Do not pressure test the system over 100 psi [690 kpa] if the "Latch-valve Assemblies" and "Hoses Assemblies" have been installed.

1. Review a copy of the final approved shop drawing(s) and/or submittal package. These documents will provide you with technical information specific to your installation, such as:
 - Equipment types and quantities
 - Room numbers and locations
 - Shop drawings of each unit type
 - Wiring diagrams and rough-in locations
 - Blocking locations

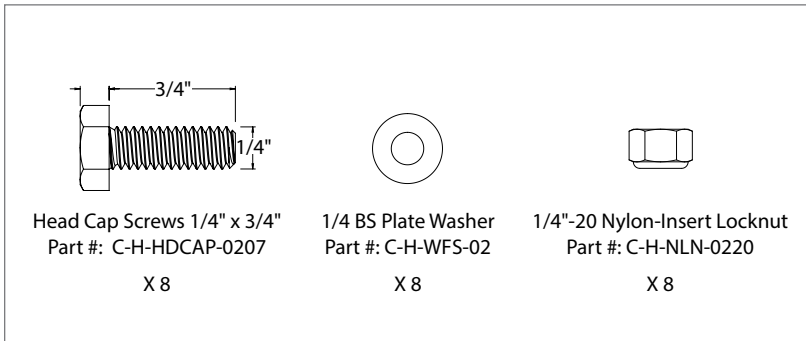
 **IMPORTANT:** Before the installation of drywall, make sure the blocking required for mounting the prefabricated system is installed at locations indicated on shop drawings.

 **WARNING:** All wiring must be completed per the National Electrical Code and/or local electrical codes by a licensed electrician.

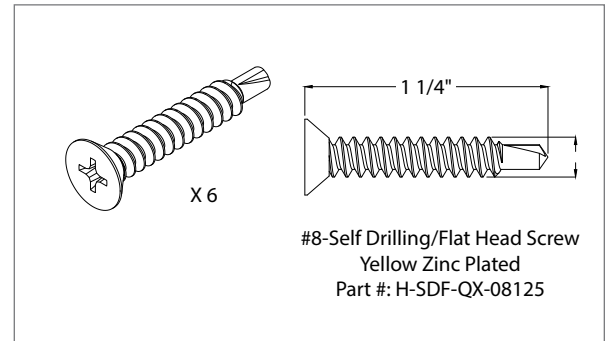
2. Prepare the tools and hardware needed to complete the installation. Some common tools that may be required are:
 - Cordless drill/driver with common drill or drive bits
 - Hand tools (screwdrivers, wrenches, clamps, pliers, etc.)
 - Laser- or Bubble-level
 - Ladder(s)
 - Jigsaw or reciprocating saw

Hardware Provided by Amico

Hardware 1



Hardware 2



Installation

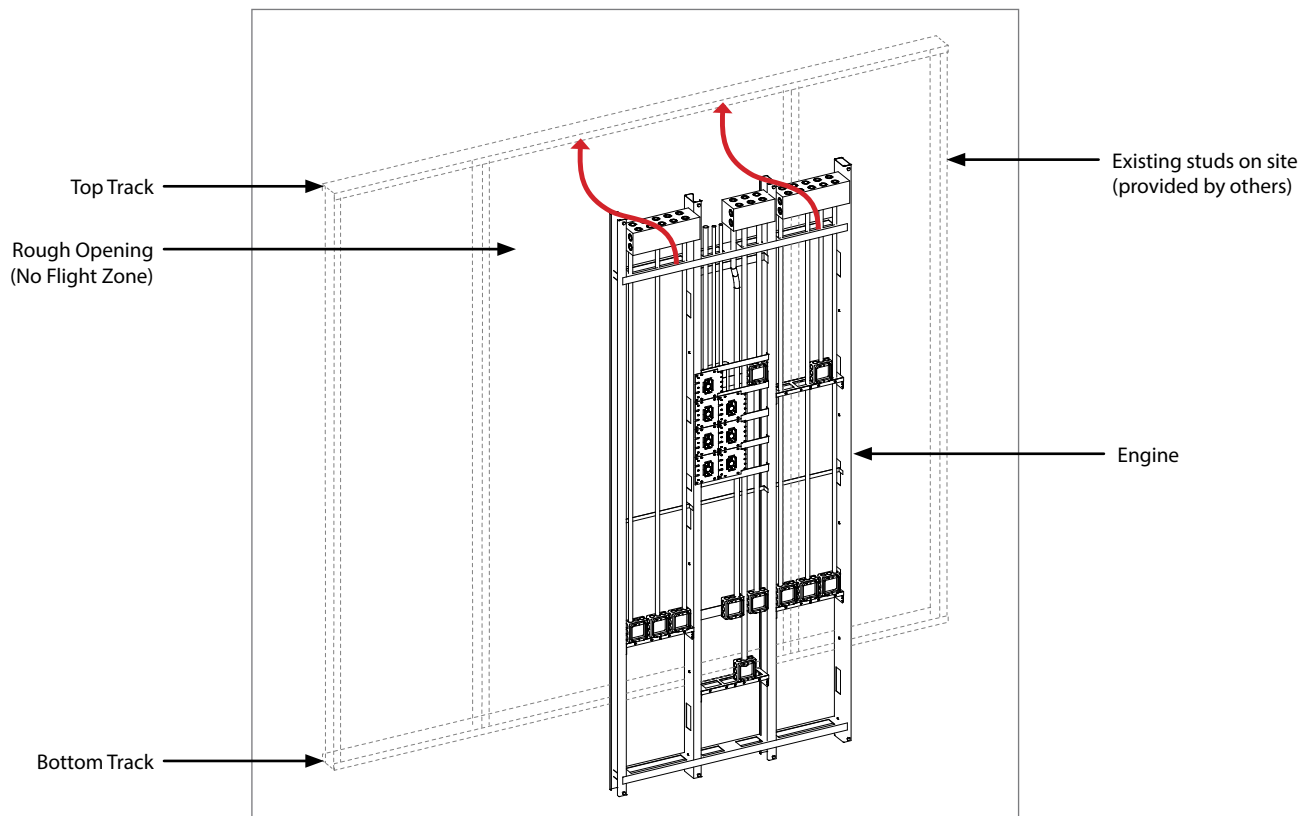
Step 1 - Engine Installation

1. Ensure top and bottom tracks are at correct height before fastening the Amico Engine.

NOTE: Please refer to the dimensions indicated on shop drawings.

2. Insert Engine into tracks using lift and drop method (**Figure 1**).

Figure 1



Engine Installation

Installation

3. Ensure the Engine's studs are plumb and level using a laser line and secure them to top and bottom building tracks using hardware provided by others.

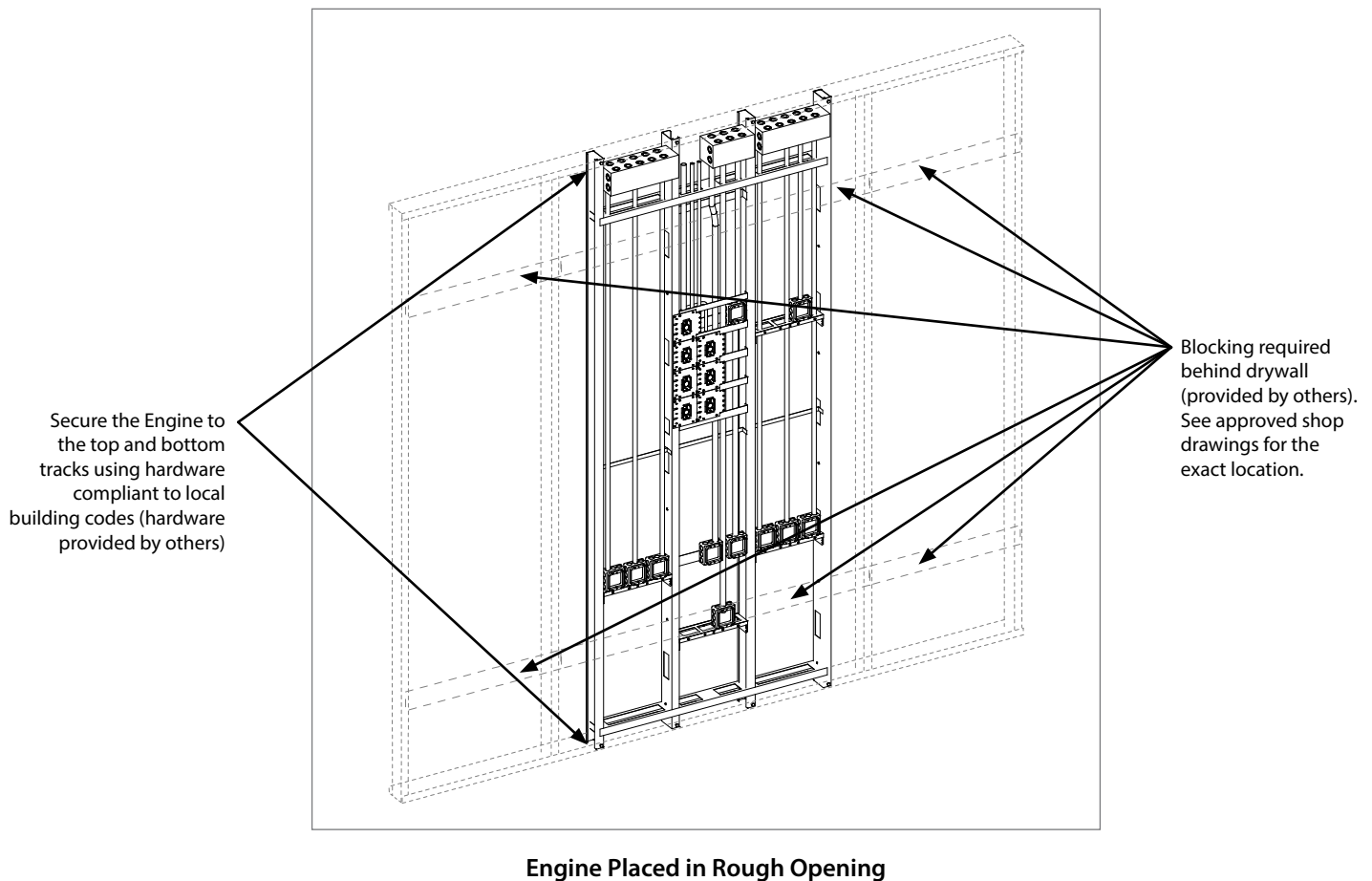
(i) NOTE: Use hardware compliant to the local building codes.

4. Make all Medgas pipe connections to the main source.

(i) NOTE: Medical gas pipes and electrical are terminated as per shop drawing.

⚠ WARNING: Only for Back-to-back units with 3 5/8" studs; braze the gas pipes with caution to prevent any damage to the acoustic sheet.

Figure 2



Installation

Step 2 - Drywall Installation (Provided by Others)

! IMPORTANT: Before installing drywall, make sure the blocking is provided on the exact location indicated on the approved shop drawings.

1. Cut drywall as needed around the boxes, gases, and the termination box located at the top (**Figure 4**).
2. Install on wall; hardware by others.
3. Tape and paint as needed.

Step 3 - Panel Frame Installation

1. Refer to the height indicated in the shop drawing to mark two horizontal lines to locate drillings for mounting of hanging bracket on the wall.
2. Mount the brackets on the wall using hardware compliant to local building codes, as per setup diagram (**Figure 3 & 4**).

Figure 3

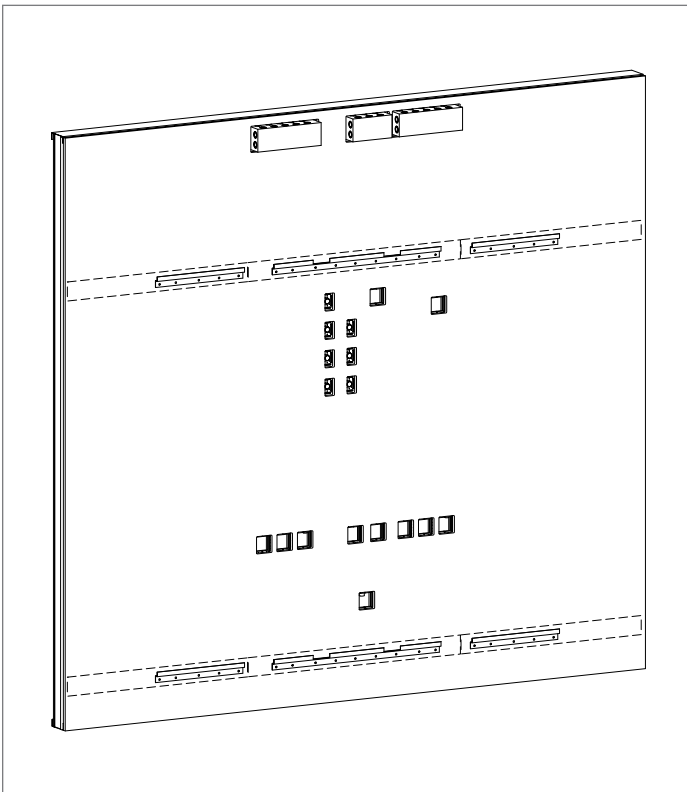
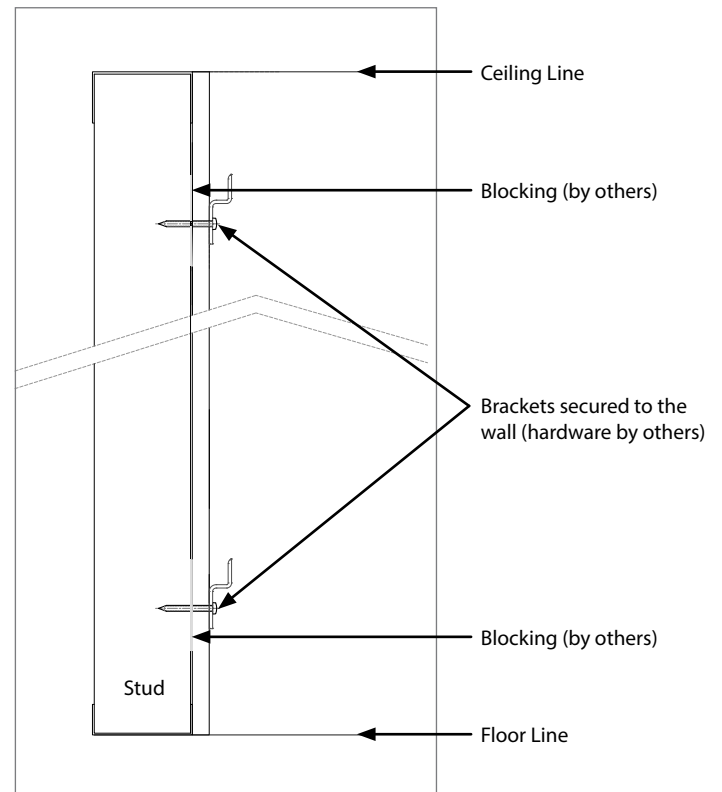


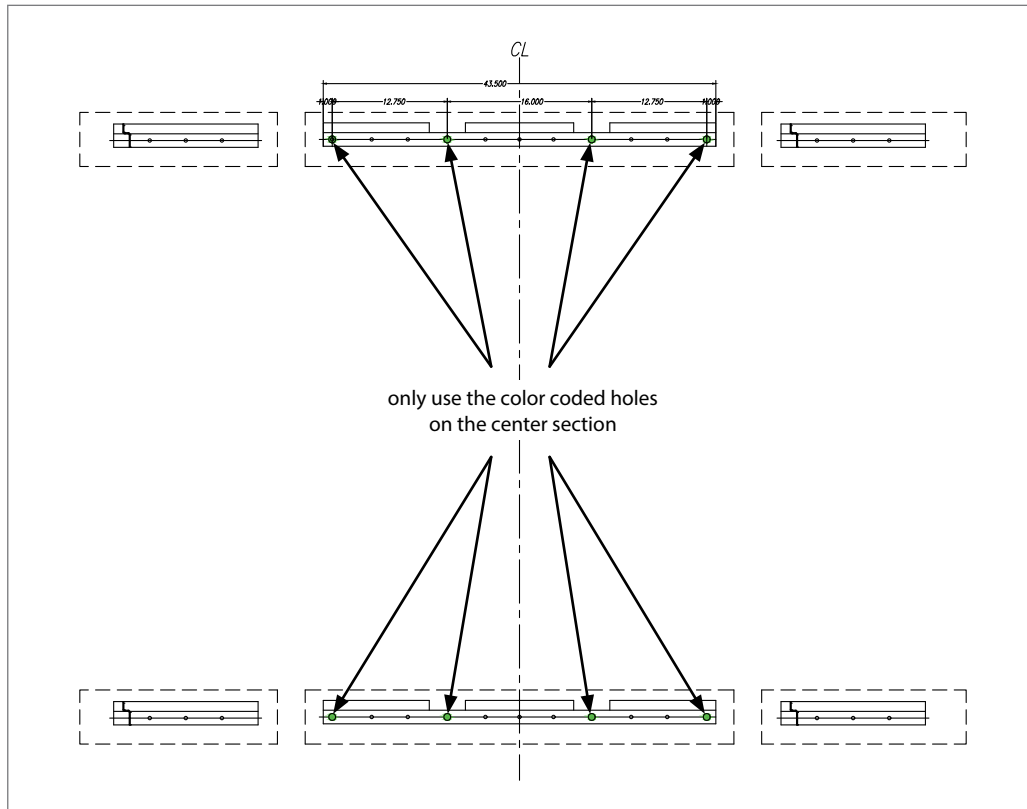
Figure 4



Installation

- i NOTE:** Hanging brackets are labeled for ease of identification.
- ! IMPORTANT:** Only use the four color coded holes on the hanging bracket of the center section. follow the blocking location for the left and right sections.
- i NOTE:** Hardware used to mount the bracket to the wall is supplied by others.

Figure 5



3. Remove device cover plates and panels.

! IMPORTANT: See Page 10 for panel removal and handling instructions.

4. Lift the right unit and hang it over the brackets which are already installed on the wall, then the left unit, prior to installing the middle unit.
5. Align the sections and connect in 4 places along the vertical edges of each section (**Figure 6**), using the hardware provided as shown in (**Hardware 1**).

! IMPORTANT: Make sure the frames are flush along the top and front. (**Figure 8**).

Installation

Figure 6

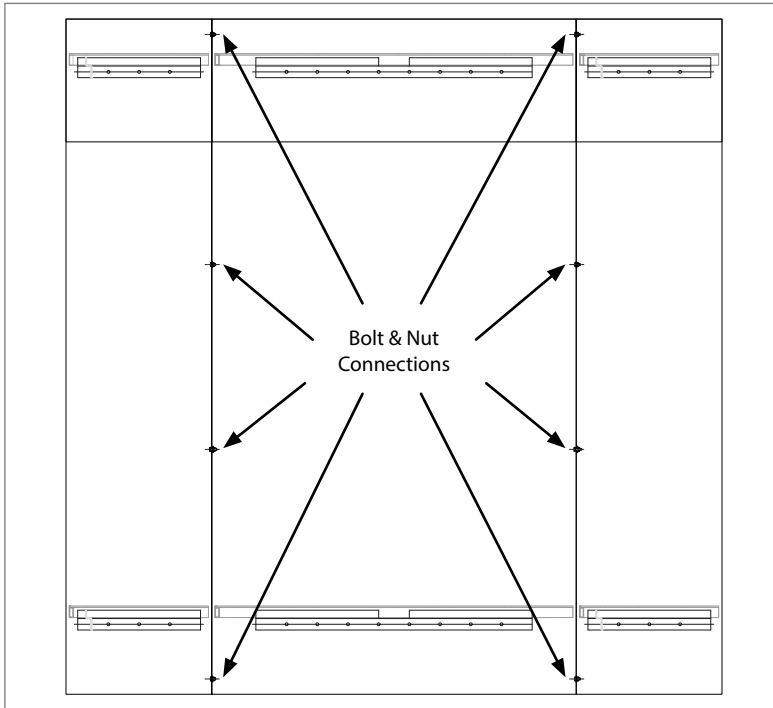
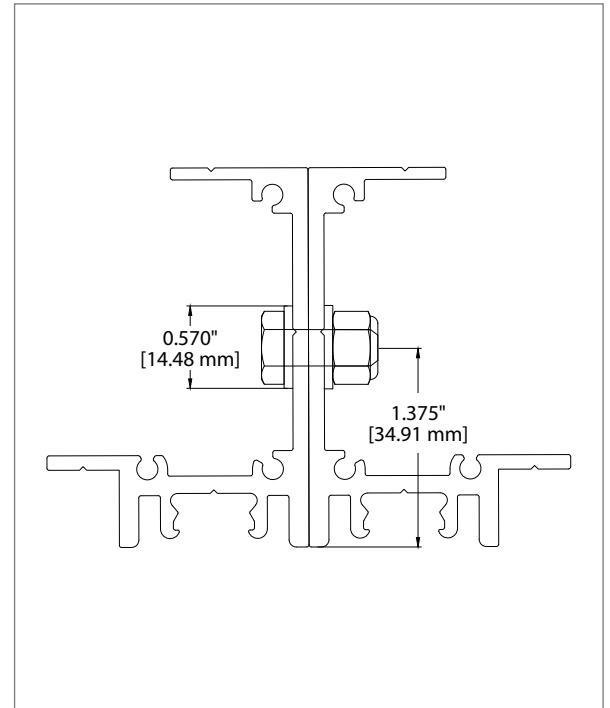
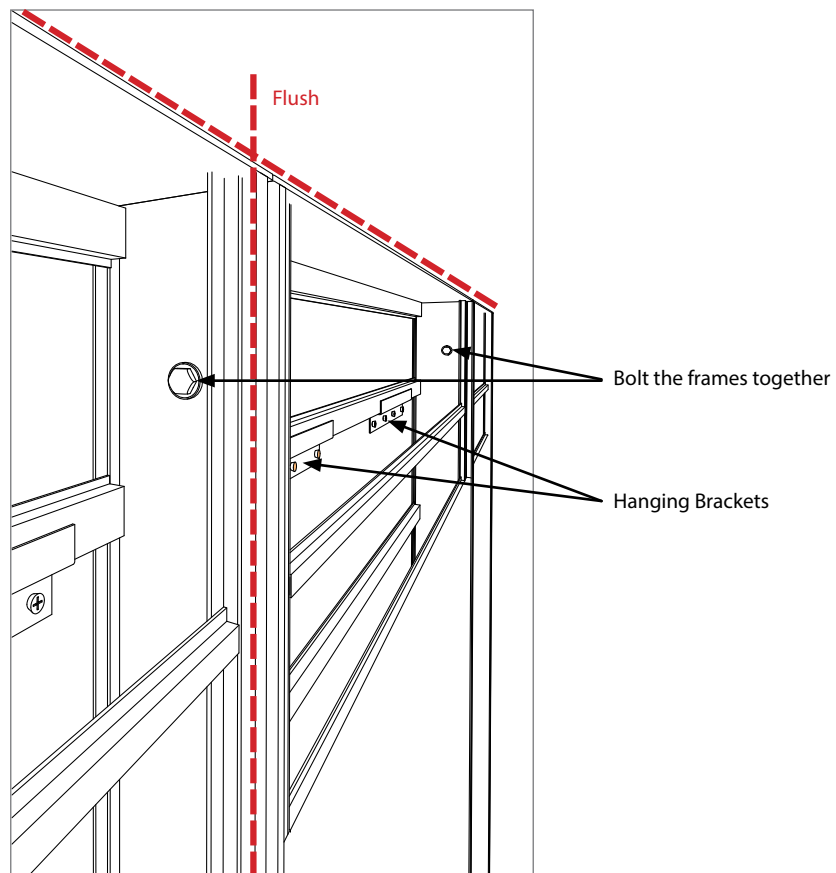


Figure 7



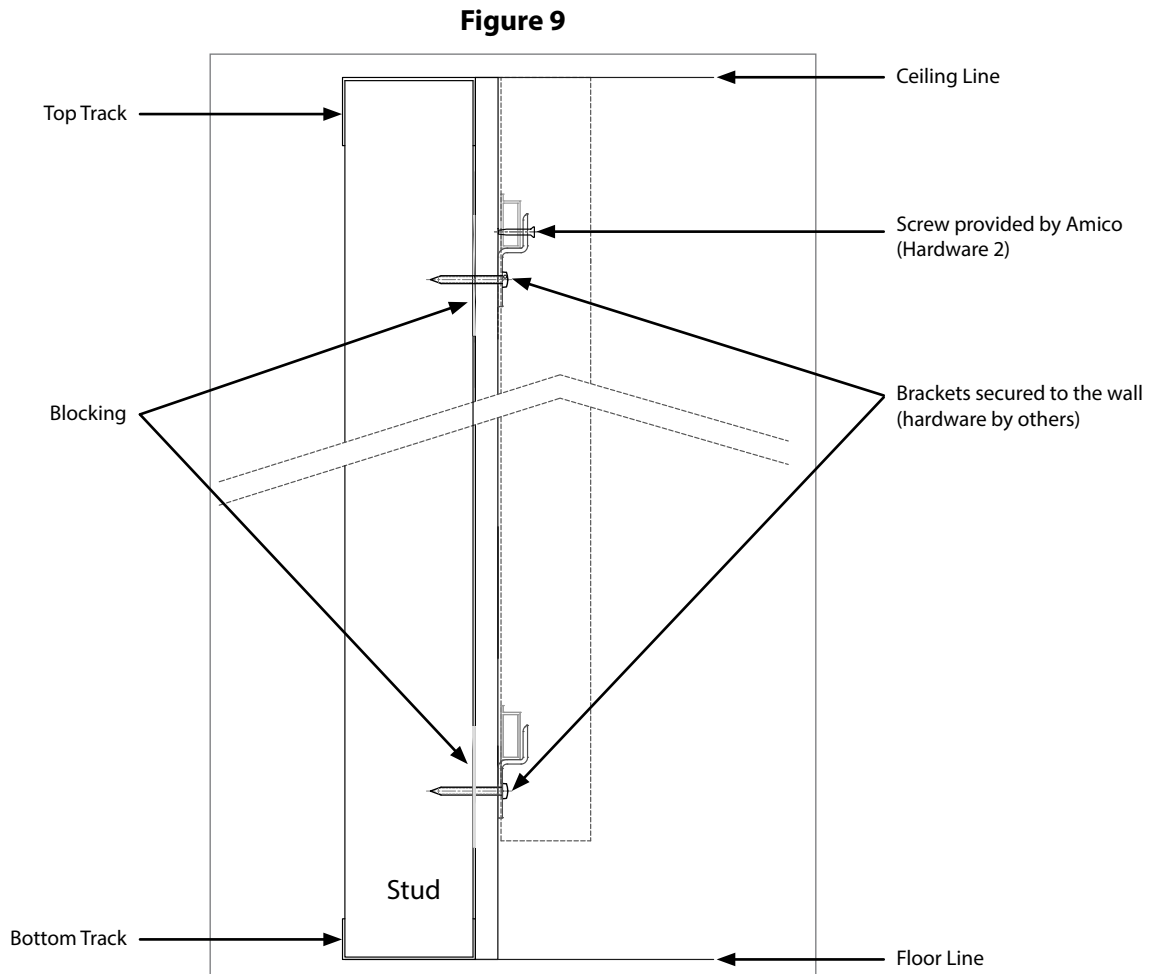
Top View Detail/Cross Section

Figure 8



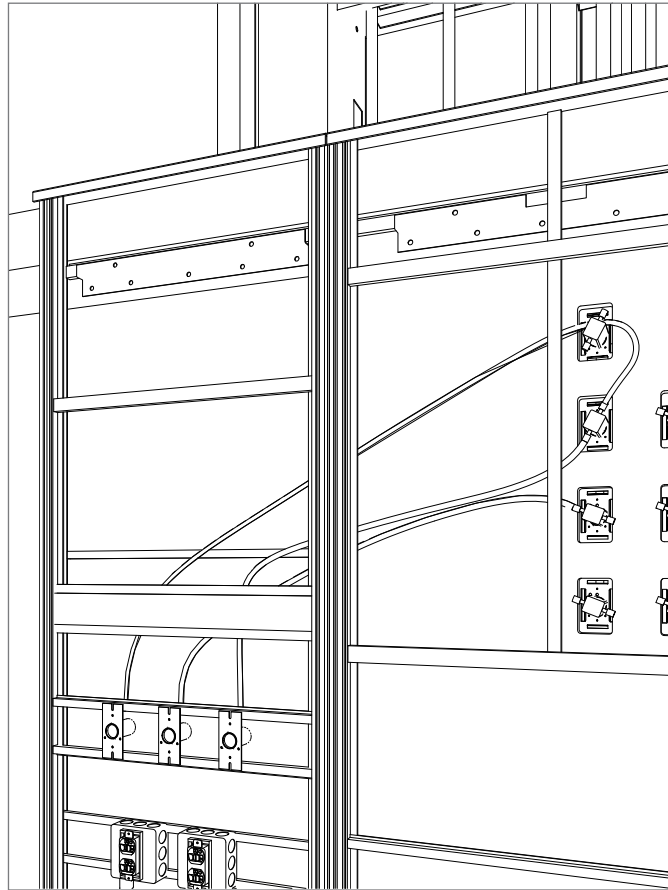
Installation

6. Connect the hanging bracket to the prefabricated system support (**Figure 9**) using the provided self-drilling screws (**Hardware 2**). Use the number of screws listed below based on section size:
 - a. 19" to 32" wide section = 2 screws
 - b. 32.1" to 48" wide section = 4 screws



7. Connect the medical gases to the FlexWall Engine (**Figure 10**).
 - i NOTE:** The ends of Hose Assemblies have gas-specific adapters meant to plug into the FlexWall Engine. Please refer to the Engine drawing on page 11 for Labeling Guidelines.
 - i NOTE:** Medical gas hoses are terminated as per shop drawings.
 - i NOTE:** The "Rough-in Assemblies" can be pressure tested up to a maximum of 200 psi without the "Latch-valve Assembly" attached to it.
 - ! WARNING:** Do not pressure test the system over 100 psi [690 kpa] if the "Latch-valve Assemblies" and "Hoses Assemblies" have been installed.
 - ! WARNING:** To prevent over tightening, use manual tools to connect the medical gas adapters onto the engine.
 - ! WARNING:** Make sure to install the plugs provided by Amico on all the unused medical gas ports.
 - ! WARNING:** Orient and secure gas hoses so that they do NOT create a "valley" (i.e., a "U"-shape).

Figure 10



8. Bring the pre-installed conduits with wire whips (loft) to the existing electrical device boxes by passing them through the openings between the frames.

i NOTE: If applicable, remove flex from cover plate, pull the flex conduit to desired electrical device boxes. Reinstall the cover plate.

! IMPORTANT: Make sure the labels on the conduit matches the labels on the Engine.

9. Pull wires through the Engine conduits to the termination box and install cover plates over the box.

10. Attach all removed items:

- Panels (must clip in properly where applicable)
- Devices and cover plates
- Reinstall the rails (if applicable)

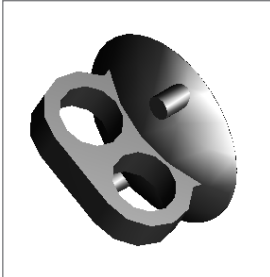
! IMPORTANT: Do not overtighten the medgas and electrical cover plates.

! IMPORTANT: (If Applicable) Install the Vertical Rails onto Frames with screws. Reinsert the Vinyl Strip into the Rail to cover the Screws. (Must use the same hardware removed from the rails in Step 3 of **Panel Frame Installation**).

Panel Removal/Handling

Access Panels

1. Use the provided suction cup to remove the middle panel then the left panel, prior to removing the right panel. Be careful not to drop the panels.



Part#: W-X-LIFTER-0475

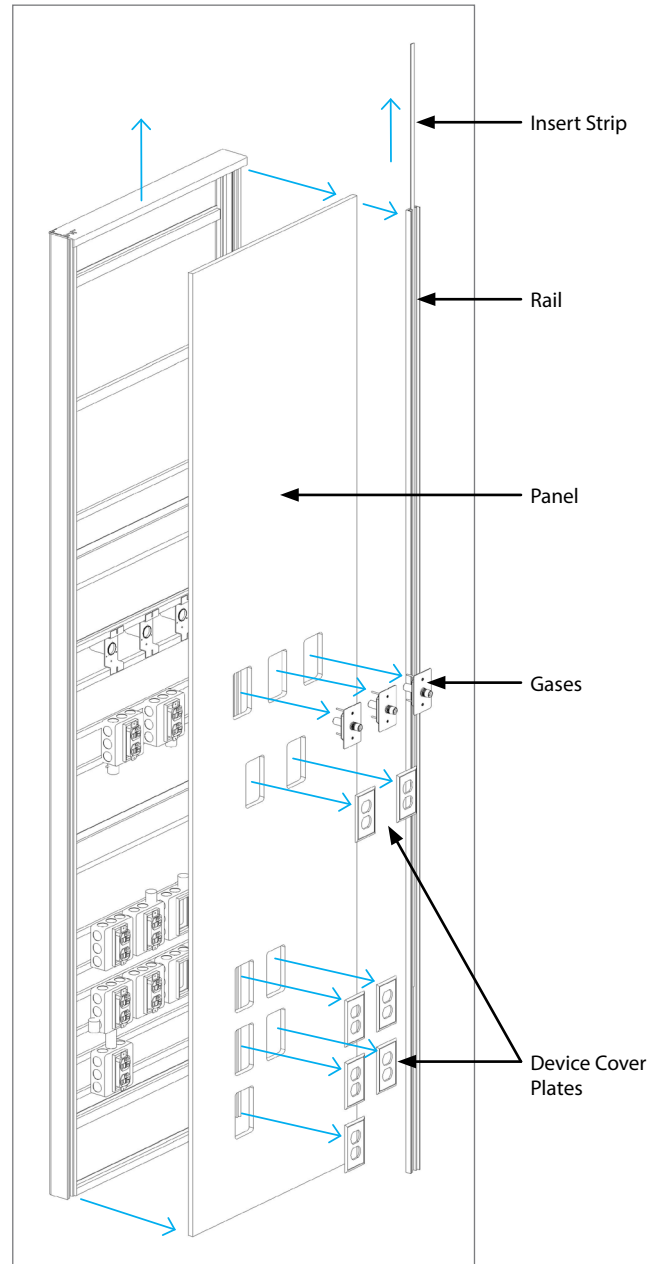
Panels with vertical rails and services

1. Remove vertical rails, where applicable:
 - Remove Top Plate
 - Remove Insert Strip
 - Remove Screws
2. Remove device cover plates and gases.
3. Remove panels (using the provided suction cup)

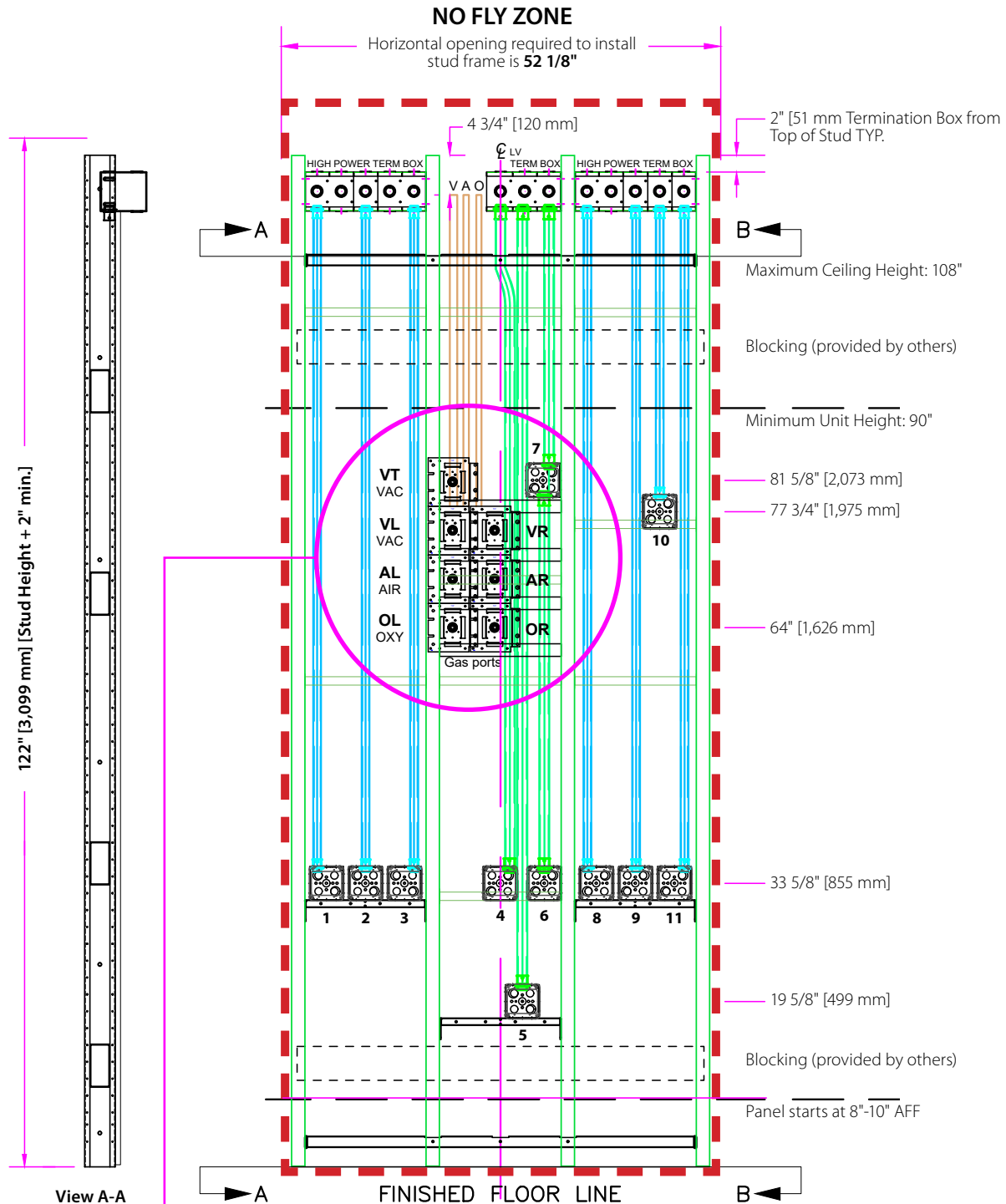
WARNING:

- Stack panels face to face to prevent damage.
- Keep panels as flat as possible when handling or storing.
- Do not drag panels on other panels in order to prevent scratch or scuff.
- Panels must be stored in controlled environment

Figure 11



NuLook FlexWall - Engine



Labeling Guidelines

Label on Drawing	Gas Type and Location
VT	Vaccum Top
VL	Vaccum Left
VR	Vaccum Right
AL	Air Left
AR	Air Right
OL	Oxygen Left
OR	Oxygen Right

i NOTE: Labeling Guideline as per the NOTE on **page 8**.

www.amico.com

Amico Corporation | 85 Fulton Way, Richmond Hill, ON L4B 2N4, Canada
600 Prime Place, Hauppauge, NY 11788, USA
Toll Free Tel: 1.877.462.6426 | Tel: 905.764.0800 | Fax: 905.764.0862
Email: info@amico.com | www.amico.com