

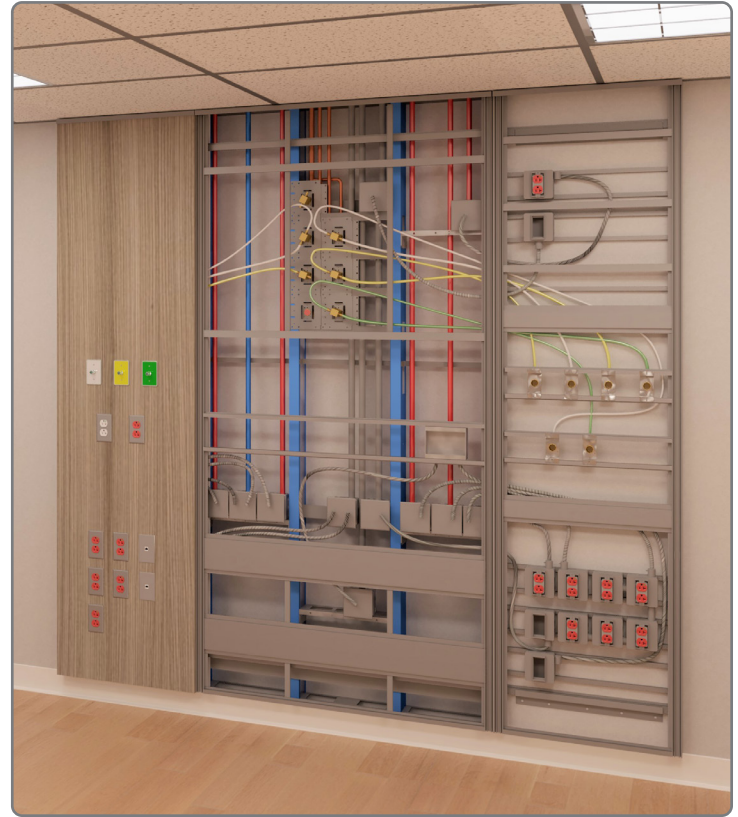
## General Specifications

The **NuLOOK FlexWall** System is manufactured by Amico Corporation. The following is a general specification, and components listed may not be present or required in final product.

The **NuLOOK FlexWall** System is listed by Underwriters Laboratories Inc. (UL) in Canada and the United States of America. Amico Corporation manufactures all products in accordance with the CSA Z7396.1 standard, National Fire Protection Association (NFPA), NFPA-99c (current edition), National Electric Code (NEC), and the Canadian Electrical Code (CEC).

### The NuLOOK FlexWall is Made Up of Several Integral Components:

- Vertical sections where the services are located. These components have optional vertical and/or horizontal rails systems and reveals as well as 3D wrap finished front panels attached. These sections are installed on the finished wall.
- Center section with removable 3D wrap panels for bed area. This component is located between the vertical sections. This section is installed on the finished wall and has optional horizontal/vertical aluminum reveals or rails. It can accommodate bed bumpers and decorative resin panels with built-in LED lights. Please refer to approved submittal drawings for project specific details.
- The Engine has integrated electrical raceways and conduit, providing single point connection for all electrical power type (critical, normal and low voltage/ communication).
- The Engine also has all medical gas piping which is hard-piped and brazed to a single point of connection.
- The frame and panels are mounted on top of the drywall and contain hoses and flex conduit which connect to the Engine with our NuLook Adapter.



## Submittals and Verifications

Job specific shop drawings shall be produced for each project. These shop drawings will clearly indicate the area of medical gas termination and electrical connection points inside the panel wall system. Built drawings will be produced and e-mailed at the time of shipment.

Amico Corporation will manufacture equipment as per signed approval drawings and verification documents which are provided in the job specific submittal package.

## Materials and Construction

### Integrated Accessory Rails (Optional)

Numbers of integrated rails (horizontal and vertical) are to match final shop drawings. Accessory rails are clear etched anodized aluminum.

### Fascia

3/8" MDF with 3D wrap laminate finish (typical). All fascia panels shall be removable for access and easy installation or maintenance of panel wall services using the spring clip system.

### Medical Gas Outlets

Amico Corporation's DISS or quick connection type.

### Medical Gas Manifold

Medical gas distribution shall be supplied by pipe drops to the single point connection above the unit as indicated on the drawing. All medical gas outlets and piping shall be brazed and tested in accordance with CSA Z7396.1 standard and NFPA-99c. All medical gas piping shall be Type L copper pipe. Each outlet, piping and manifold shall pass a 24 hour standing pressure test.

### Electrical Wiring

Wire for standard and critical branch power circuits shall be #10 or #12 (as specified) type THHN stranded copper wire, 600 volt, with heat resistant thermoplastic insulation for hot (black) and neutral (white). Grounds shall be #10 THHN stranded copper wire (green). All ground conductors shall be installed in conduit.

## Low Voltage Data Provisions

Low voltage devices (excluding nurse call system devices) shall be connected to existing low voltage sources via flexible conduits. Nurse call patient station device shall be furnished, installed and wired by low voltage contractor.

### Electrical Receptacles

This shall be Hospital Grade 15 or 20 amp, 120 or 277 volt, UL listed and marked hospital grade. Amico Corporation shall furnish and install receptacles with wiring required, as shown on submittal shop drawings. Electrical contractor shall ensure compatibility of plug on accessory equipment to be used with these devices:

Duplex receptacles shall be NEMA style 5-15R or 5-20R, in ivory color for use on normal power circuits, and in red color for use on critical branch power circuits.

### Warranty

Amico Corporation warrants its Architectural Products to be free from material defects and workmanship for a period of ten (10) years from the date of shipment.

Distributed By: