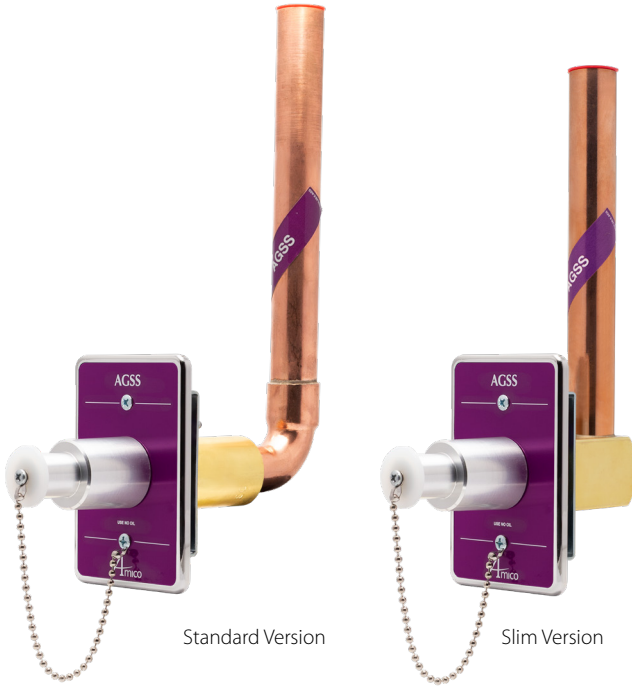


Passive Evacuation Outlet (AGSS)



Standard Version

Slim Version

General Specifications:

The medical gas outlet shall be an Amico Alert-1 series.

The Passive Outlet shall be manufactured with a 7-1/4" [184 mm] length type "K" 7/8" [22 mm] outside diameter, 3/4" nominal size copper inlet pipe stub, which is silver brazed to the outlet body. Suction inlets are not supplied with a secondary check valve. A pressure plug is provided for testing purposes, rated at 150 psi [1,034 kPa]. Outlets bodies shall be gas specific by indexing each gas service to a gas specific dual pin indexing arrangement on the respective identification module.

A large color coded front plate shall be used for ease of gas identification and aesthetic appeal.

With the back rough-in mounted, the outlet shall adjust up to 3/4" (19 mm) variation in mounting plate thickness.

The Passive Front Latch-Valve Assembly is assembled with an aluminum adapter, which accommodates 19/33 mm hose.

All M.R.I outlets are manufactured from nonferrous materials.

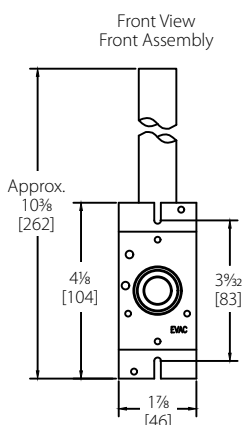
All outlets shall be cleaned and degreased for medical service, factory assembled and tested.

Features:

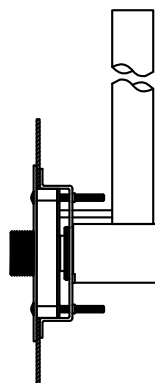
- Flow rate exceeds the requirements of CSA
- 100% pressure testing of each outlet and cleaned for medical gas service
- Indexed to eliminate interchangeability of gas services
- Up to 3/4" (19 mm) mounting plate thickness adjustment
- Outlets are also available for M.R.I. use
- 360° swivel inlet pipe for easy installation

Project

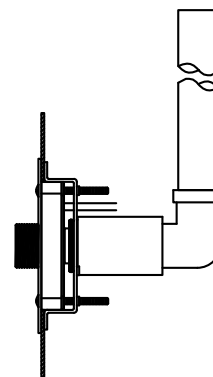
Technical Specifications



Slim Version

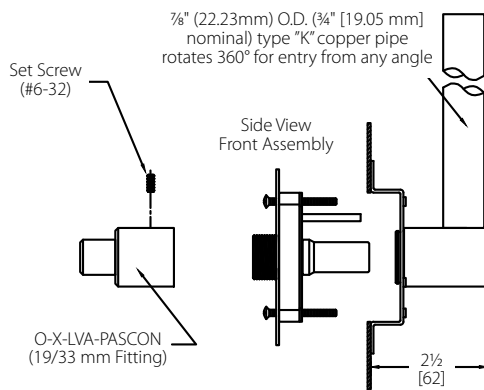
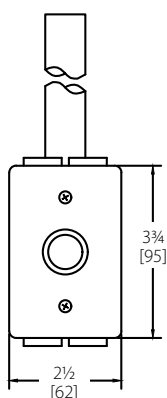


Standard Version



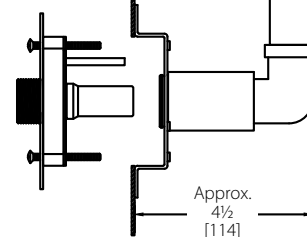
Inch
[mm]

Front View
Back Assembly



7/8" (22.23mm) O.D. (3/4" [19.05 mm] nominal) type "K" copper pipe rotates 360° for entry from any angle

Side View
Front Assembly



NOTE: Passive suction inlets are not supplied with a secondary check valve. A pressure plug is provided for testing purposes, rated at 150 psi (1,034 kPa).

Model Numbers

Labeling

AGSS (Anesthetic Gas Scavenging System)
CSA/ISO Standard

Front Latch Assembly Only

O-FASC-PAS-E-AGS
(O-FAMC-PAS-E-AGS for M.R.I.)

Back Console Station Outlets

O-BAKCON-PAS-E-AGS
(O-BAKCONM-PAS-AGS for M.R.I.)
O-BAKCON-PSL-E-AGS (Slim Version)

Passive Console Station Outlets

O-PASCON-E-AGS
(O-PASCONM-E-AGS for M.R.I.)
O-PASCONSL-E-AGS (Slim Version)

Distributed By:

