

# Passive Evacuation Outlet (WAGD)



## General Specifications:

The medical gas outlet shall be an Amico Alert-1 series.

The Passive Outlet shall be manufactured with a 7-1/4" [184 mm] length type "K" 7/8" [22 mm] outside diameter, 3/4" nominal size copper inlet pipe stub, which is silver brazed to the outlet body. Suction inlets are not supplied with a secondary check valve. A pressure plug is provided for testing purposes, rated at 150 psi [1,034 kPa]. Outlet bodies shall be gas specific by indexing each gas service to a gas specific dual pin indexing arrangement on the respective identification module.

A large color coded front plate shall be used for ease of gas identification and aesthetic appeal.

With the back rough-in mounted, the outlet shall adjust up to 3/4" (19 mm) variation in mounting plate thickness.

The Passive Front Latch-Valve Assembly is assembled with an aluminum adapter, which accommodates 19/33 mm hose.

All M.R.I. outlets are manufactured from nonferrous materials.

All outlets shall be cleaned and degreased for medical service, factory assembled and tested.

Amico products comply with NFPA 99.

## Features:

- Flow rate exceeds the requirements of NFPA
- 100% pressure testing of each outlet and cleaned for medical gas service
- Indexed to eliminate interchangeability of gas services
- Up to 3/4" (19 mm) mounting plate thickness adjustment
- Outlets are also available for M.R.I. use
- 360° swivel inlet pipe for easy installation

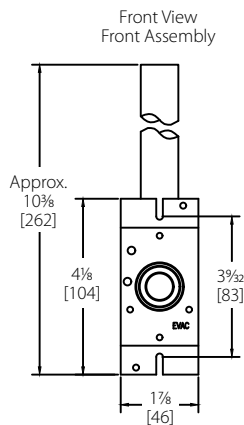
## Project

---

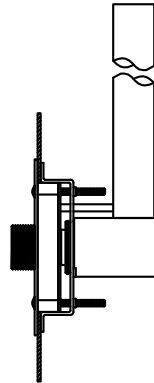
---

---

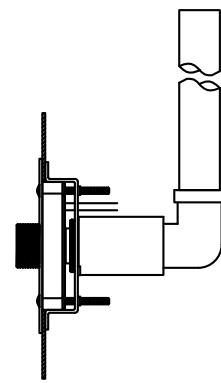
# Technical Specifications



Slim Version

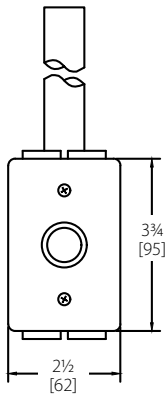


Standard Version



Inch  
[mm]

Front View  
Back Assembly

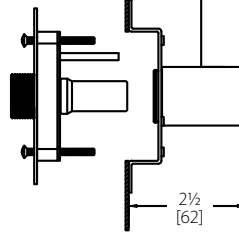


Set Screw  
(#6-32)

O-X-LVA-PASCON  
(19/33 mm Fitting)

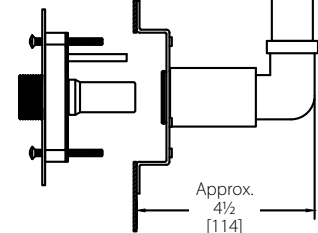
7/8" (22.23mm) O.D. (3/4" [19.05 mm] nominal) type "K" copper pipe rotates 360° for entry from any angle

Side View  
Front Assembly



7/8" (22.23mm) O.D. (3/4" [19.05 mm] nominal) type "K" copper pipe rotates 360° for entry from any angle

Side View  
Front Assembly



**NOTE:** Passive suction inlets are not supplied with a secondary check valve. A pressure plug is provided for testing purposes, rated at 150 psi (1,034 kPa).

## Model Numbers

### Labeling

WAGD (Waste Anesthetic Gas Disposal)  
NFPA/US Standard

### Front Latch Assembly Only

O-FASC-PAS-U-WAG  
(O-FAMC-PAS-U-WAG for M.R.I.)

### Back Console Station Outlets

O-BAKCON-PAS-U-WAG  
(O-BAKCONM-PAS-WAG for M.R.I.)  
O-BAKCON-PSL-U-WAG (Slim Version)

### Passive Console Station Outlets

O-PASCON-U-WAG  
(O-PASCONM-U-WAG for M.R.I.)  
O-PASCONSL-U-WAG (Slim Version)

Distributed By:

