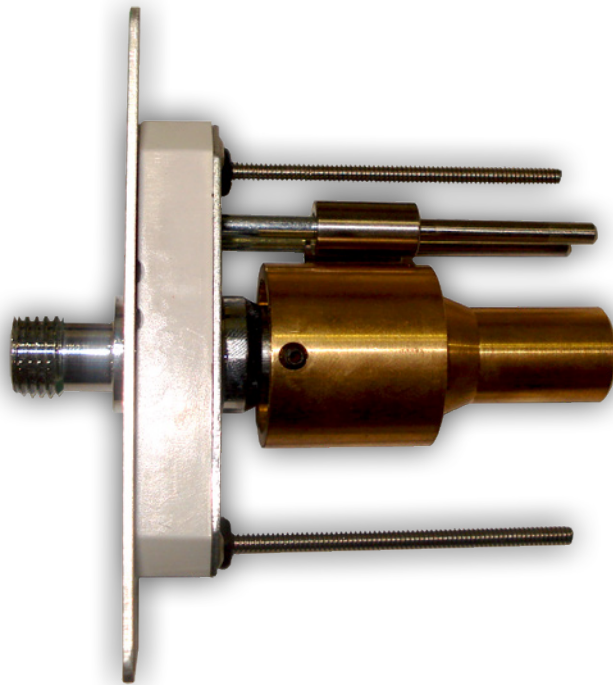


Installation Instructions

Latch Valve Extension Kit




Amico

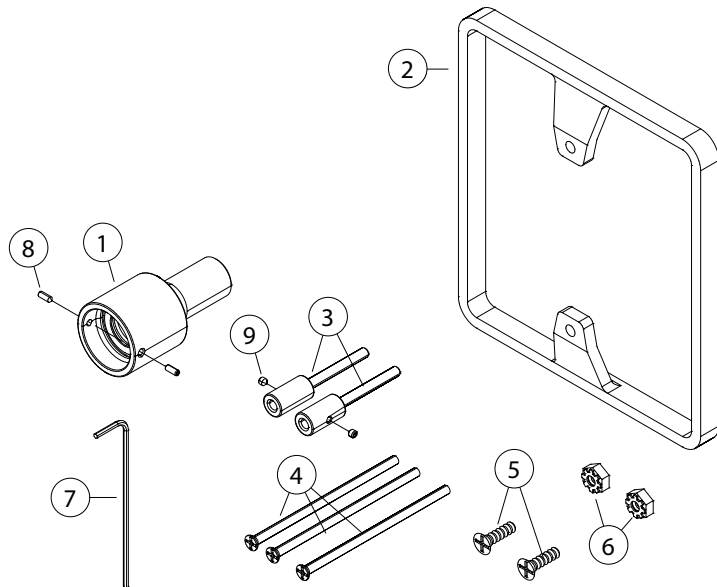
User Responsibility, Kit Contents, & Required Tools

The information contained in this Installation Manual pertains only to the O-FASC-EXT-KIT-G2. This product will perform as described in this manual when installed and used with the installation instructions provided.

Statement in this manual preceded by the word **WARNING** is of special significance.

 **WARNING:** Denotes steps which can prevent injury.

The Latch Valve Extension Kit allows you to alter a Latch Valve Assembly to accommodate a 1¼" to 2" wall thickness. Latch Valve Extension Kits shall be cleaned and degreased for medical gas services, factory assembled and tested.



Kit Contents

Model Number: O-FASC-EXT-KIT-G2

Item	Quantity	Description
1	1	Extended adapter with seal.
2	1	¾" (9.525 mm) stand-off filler frame.
3	2	Indexing pin extensions.
4	3	#6-32 x 3" Phillips Flat Head Screw
5	2	#6-32 x 7/16", Phillips Flat Head Screw
6	2	#6-32 Keps nut
7	1	⅛" Hex Allen Key Wrench
8	2	#6-32 x ¾" Set Screws (already installed in extension assembly)
9	2	#6-32 x ⅛" Set Screws (already installed in indexing pin assembly)

Required Tools



Tape Measure



Phillips Type Screwdriver

Installation

Step 1: Preparation

Measure wall depth from outlet rough-in to finished wall surface. **(Figure 1)**

If wall depth is between 1¼" (31.75 mm) and 1¾" (44.45 mm), the ¾" (9.525 mm) filler frame will be required for proper installation.

If wall depth is over 1¾" (44.45 mm) discard the ¾" (9.525 mm) filler frame.

Assemble ¾" Filler Frame and Trim Plate.

Using the two #6-32 x 7/16" screws and the two #6-32 Keps nuts provided, assemble the trim plate onto the filler frame. **(Figure 2, 3 & 4)**



Figure 1

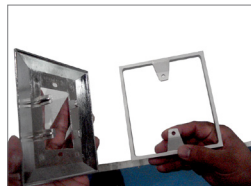


Figure 2

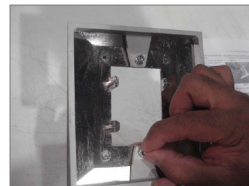


Figure 3

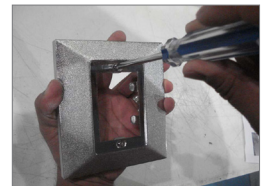


Figure 4

Installation

Step 2: Assemble Extension Adapter to Latch Valve

Install and push the Extension Adapter fully onto the barrel of the Front Latch Assembly. **(Figure 5)**

Tighten the two set screws with the provided 1/16" Hex Allen Key. **(Figure 6)**

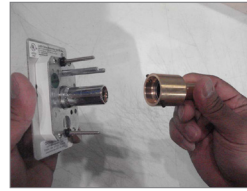


Figure 5

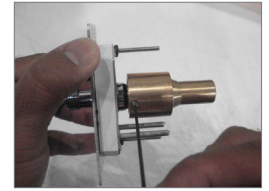


Figure 6

Step 3: Assemble Indexing Pin Extension to Latch Valve

Slide indexing pin extensions fully onto latch valve indexing pins. **(Figure 7)**

Tighten set screws with the provided 1/16" Hex Allen Key. **(Figure 8)**

Note: Indexing pin extensions must not protrude more than 1/4" beyond the end of the Extension Adapter.



Figure 7



Figure 8

Step 4: Mounting Screws

Replace existing Latch Valve screws with #6-32 x 3" screws provided in the kit. **(Figure 9)**

Completed Latch Valve Assembly should appear as shown. **(Figure 10)**



Figure 9

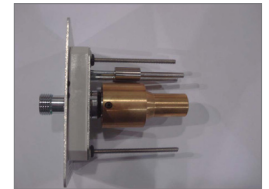


Figure 10

Step 5: Installation

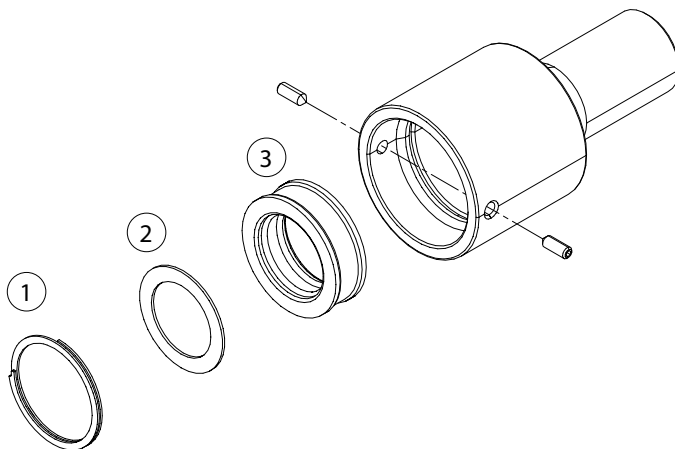
Install completed Extended Latch Valve Assembly with complete Trim Plate Assembly to the rough-in. **(Figure 11)**



Figure 11

WARNING: All systems must be inspected for proper gas service and leakage prior to putting into service.

Extension Valve Adapter Repair Components



Model Number: O-RK-BAK-EXT

Item	Quantity	Description
1	O-X-BAK-RETAI	Retaining Ring
2	H-WASH-895-SS	Washer
3	O-X-BAK-SEAT	Seat/Seal

www.amico.com