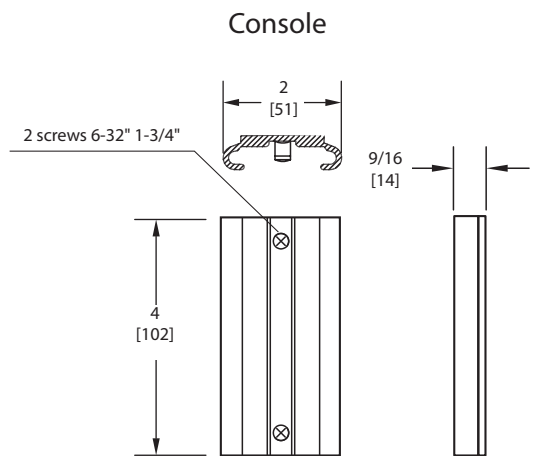
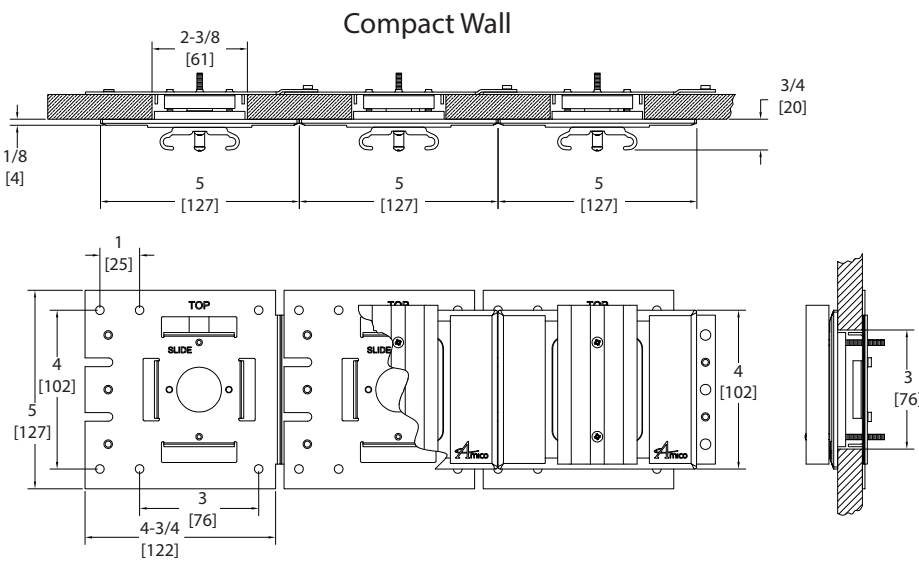
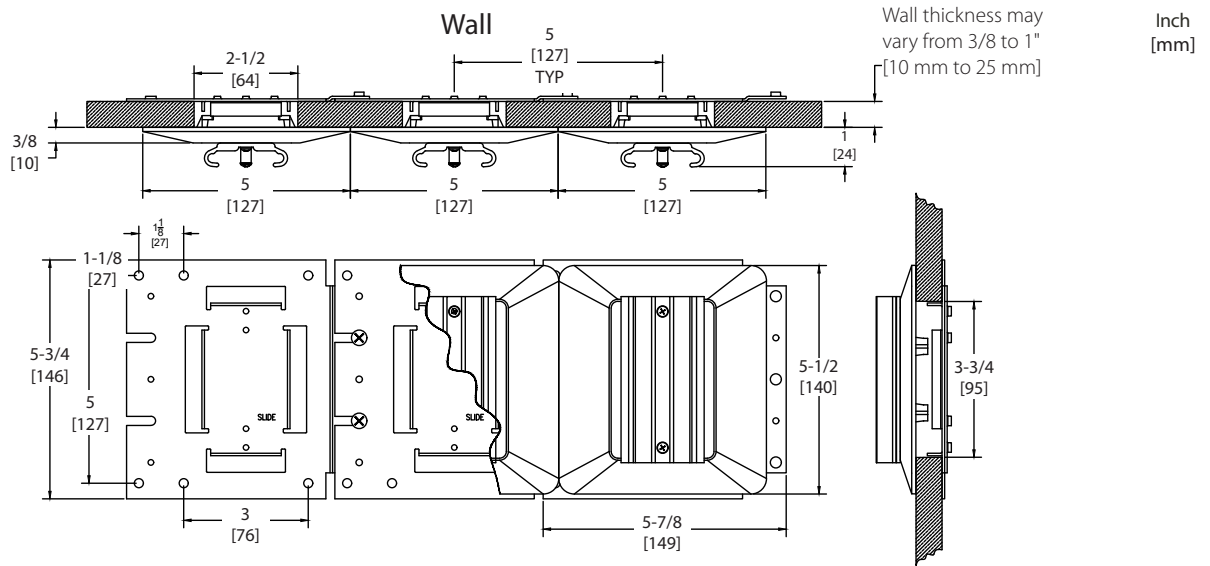


Slide Bracket Wall and Console



NOTES:

- 1) Electrical/blanks can be ganged together with wall outlets.
- 2) Amico recommends that you have a blank space between outlets and slides.

Model Numbers

Wall Slide
 Wall Slide (Satin Finish)
 Console Slide
 Compact Wall Slide

O-WALSLIDE-G2
O-WALSLIDE-G-G2
O-CONSLIDE
OC-WALSLIDE

Available for M.R.I.

Wall Slide M.R.I.
 Wall Slide M.R.I. (Satin Finish)
 Console Slide M.R.I.

O-WALSLIDE-M-G2
O-WALSLIDE-G-M-G2
O-CONSLIDE-M

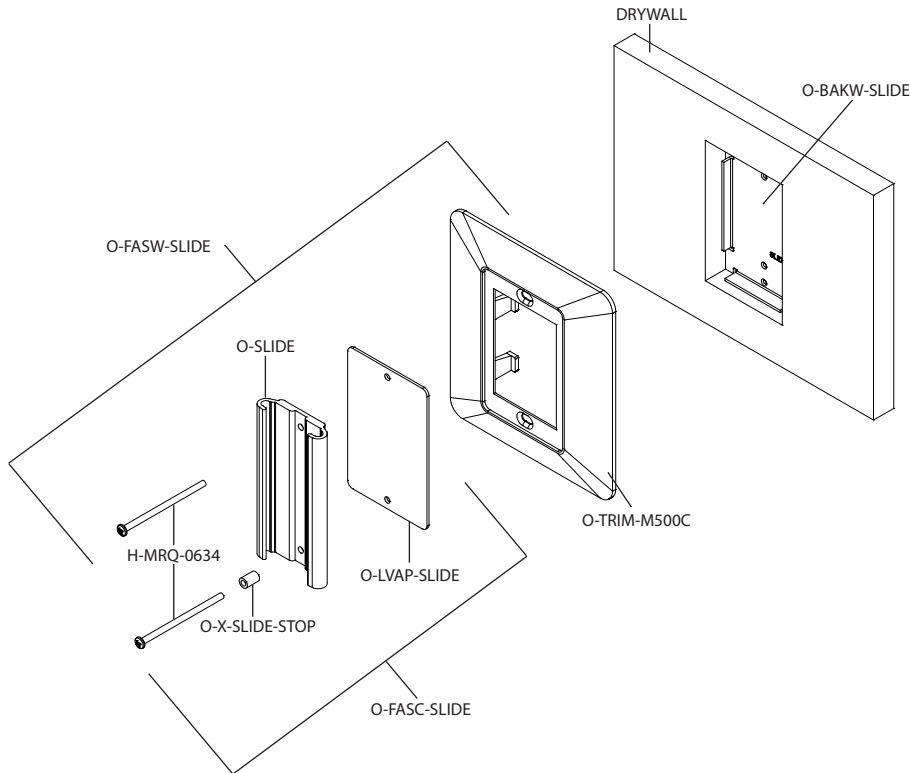
Materials of Construction

Slide
 Stopper
 Screws
 Cover Plate
 Back-Assembly

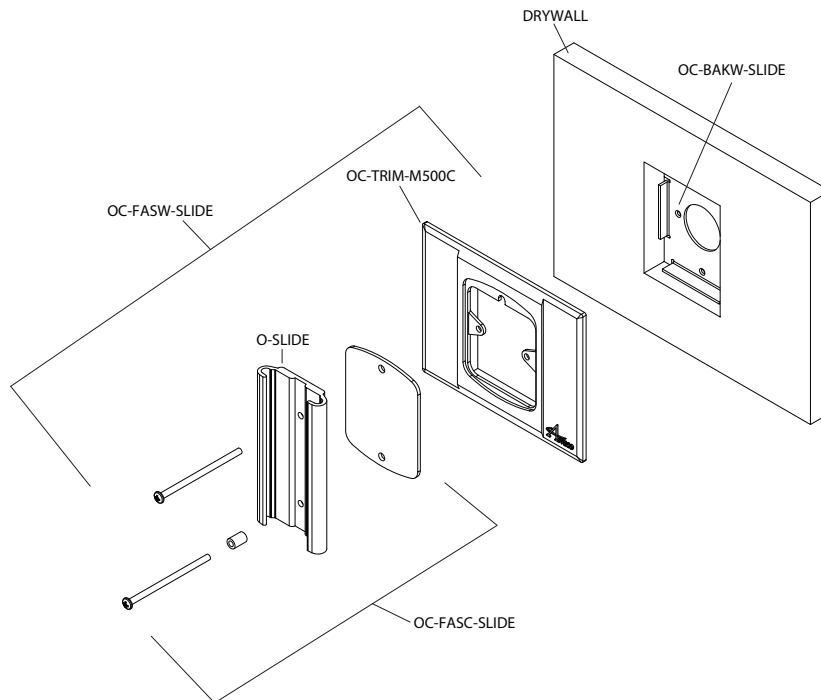
Anodized Aluminium
Nylon
Plated Steel
Chrome Plated Zinc
Plated Steel

Slide Bracket Wall and Console

Wall



Compact Wall



NOTE: Before installing the bottom screw and slide stopper, remove and discard the black O-ring.