

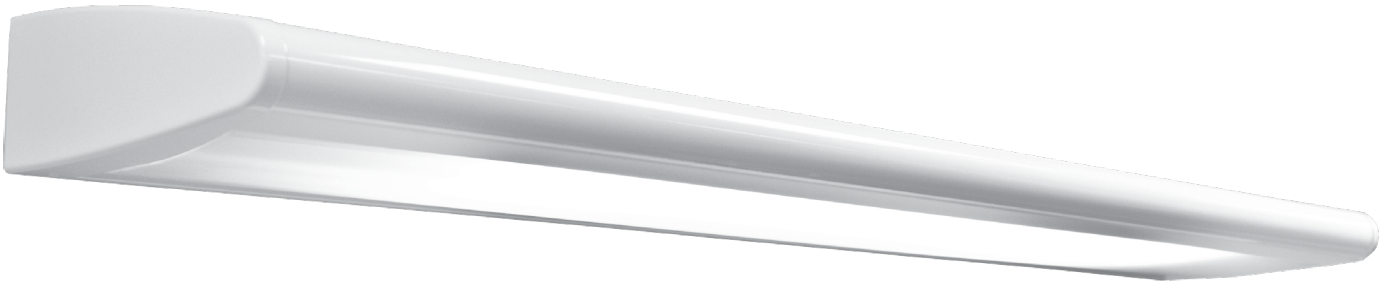
# Lighting Solutions



*A*mico

# Skyline Series

## Overbed LED Light



Inspired by the aerodynamic shape of an airplane wing, the Amico **Skyline Series Overbed LED Light** offers a sleek and elegant design that meets the needs of both the patient and caregiver. When placed on the headwall above the patient bed, the Skyline overbed light delivers high level illumination and light distribution to allow caregivers to perform thorough examinations with ease while additional reading and ambient functions improve patient comfort and well-being.

### Multiple Directional Light Configurations



Reading Light



Ambient Light



Examination Light



Night Light

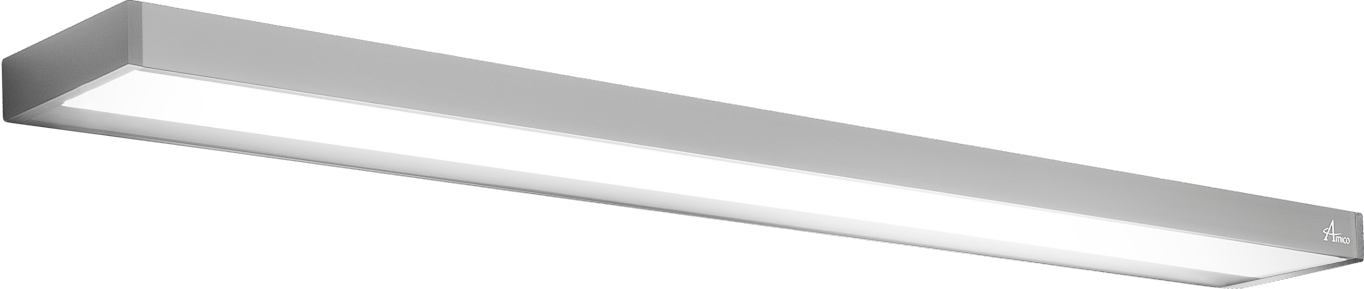


## Specifications

<b>Voltage:</b>	120 - 277 Volts	<b>Housing:</b>	Marine Grade Aluminum Extrusion. Housing attaches to mounting plate provided and secured to PEM studs. Unique hinge design on mounting plate for single man install.
<b>Wattage:</b>	Total: 112.3 W Exam: 48.2 W Ambient: 32.3 W Reading: 30.0 W	<b>Finish:</b>	Hospital grade material and finish.
<b>Light Output: 4' version</b>	Total: 9,964 lm Exam: 3,950 lm Ambient: 3,321 lm Reading: 2,739 lm	<b>Lens:</b>	High Impact, frosted acrylic. Extruded to frame for tight fit and infection control.
<b>Dimming:</b>	0 - 10 Volts, Standard 5% dimming; contact factory for 1% dimming, DALI options available	<b>Light Source:</b>	Samsung LED mounted to aluminum core linear boards.
<b>Color Quality:</b>	80 CRI, 90 CRI	<b>Drivers:</b>	High power factor constant current, 0.97 pf @ 120 V (Class 2, Class II).
<b>Color Temperature:</b>	3000K, 3500K, 4000K	<b>Color Options:</b>	Antique White and Silver Aluminum.
<b>Life of LEDs:</b>	L70 50,000 hours	<b>Length Options:</b>	Nominal 2' Actual: 26.75" (679.5 mm) Nominal 3' Actual: 38.75" (984.3 mm) Nominal 4' Actual: 50.75" (1289.1 mm)
<b>Warranty:</b>	Limited five (5) year warranty		

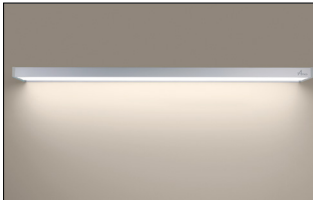
# Slimline Series

## Overbed LED Light

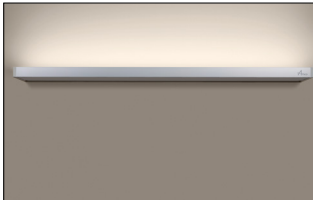


The Amico **Slimline Series Overbed LED Light** offers a minimalist design that meets the needs of both the patient and caregiver. Incorporating the latest LED edge-lit technology the Slimline overbed light is designed to provide high level illumination and light distribution while meeting the aesthetic requirements of the patient room. With infection control in mind, this fixture is designed with seam-free surfaces and clean edges.

### Multiple Directional Light Configurations



Reading Light



Ambient Light



All On

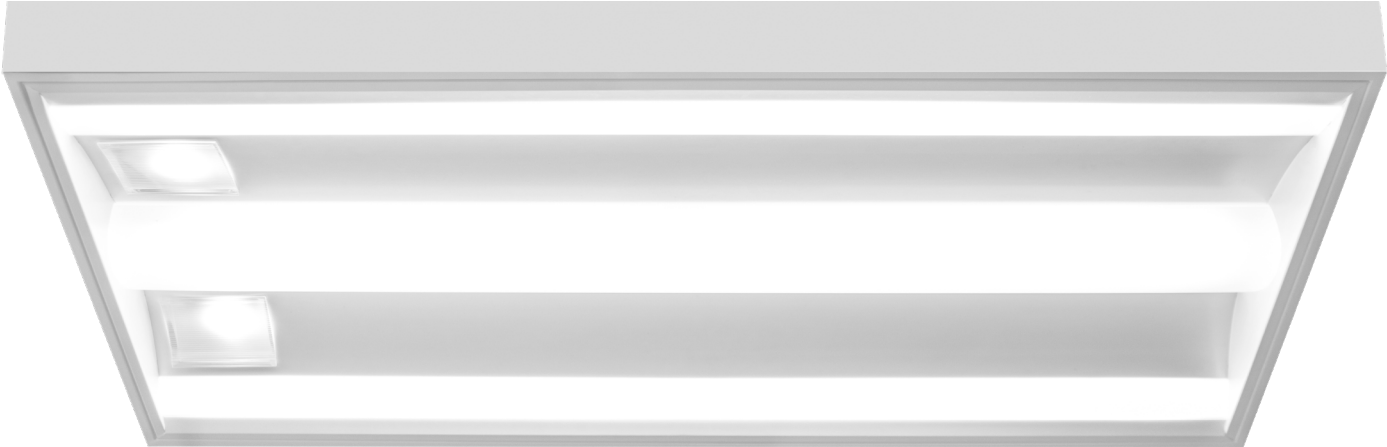


## Specifications

<b>Voltage:</b>	120 - 277 Volts	<b>Housing:</b>	Marine Grade Aluminum Extrusion. Unique hinge design on mounting plate for single man install.
<b>Wattage:</b>	Total: 74 W Reading: 42 W Ambient: 32 W	<b>Finish:</b>	Etch clear anodized finish.
<b>Light Output: 4' version</b>	Total: 6,490 lm Reading: 3,615 lm Ambient: 2,875 lm	<b>Lens:</b>	Ultra smooth diffusion achieved through edge-lit technology. Polycarbonate.
<b>Dimming:</b>	0 - 10 Volts, Standard 5% dimming; contact factory for 1% dimming, DALI options available	<b>Light Source:</b>	Samsung LED mounted to aluminum core linear boards.
<b>Color Quality:</b>	80 CRI, consult factory for 90 CRI	<b>Drivers:</b>	High power factor constant current, 0.97 pf @ 120 V (Class 2, Class II).
<b>Color Temperature:</b>	3000K, 3500K, 4000K	<b>Color Options:</b>	Silver Aluminum.
<b>Life of LEDs:</b>	L70 50,000 hours	<b>Length Options:</b>	2' (24" / 610 mm) 3' (36" / 914 mm) 4' (48" / 1219 mm)
<b>Warranty:</b>	Limited five (5) year warranty		

# Solar Series

## Eclipse 2 x 4 LED Light



We designed the **Solar Eclipse 2 x 4 LED Light** to provide you with all of the functions a patient room requires conveniently in one fixture. This modern multifunction patient room fixture offers Reading, Ambient, and Exam functions as well as an optional Night Light, to provide the patient an optimal healing environment while maximizing clinical efficiencies with proper lumen output and glare-free lighting.

### Other Configurations



Multifunction



Ambient / Exam



Exam



## Specifications

<b>Voltage:</b>	120 - 277 Volts	<b>Housing:</b>	20 Gauge CRS. One piece, seam-welded construction.
<b>Wattage:</b>	Total: 126 W Exam: 80 W Ambient: 37 W Reading: 9 W	<b>Finish:</b>	White urethane powder coat finish. 5 step treatment; antimicrobial finish.
<b>Standard Light Output:</b>	Total: 13,161 lm Exam: 8,280 lm Ambient: 4,140 lm Reading: 741 lm	<b>Lens:</b>	High impact, LED specific acrylic.
<b>Dimming:</b>	0 - 10 Volts, Standard 5% dimming; contact factory for 1% dimming, DALI options available	<b>Light Source:</b>	Samsung LED mounted to aluminum core linear boards.
<b>Color Quality:</b>	Standard 80 CRI (contact factory for 90 CRI)	<b>Drivers:</b>	High power factor constant current, 0.97 pf @ 120 Volts (Class 2, Class II).
<b>Color Temperature:</b>	3000K, 3500K, 4000K (contact factory for additional options)	<b>Optional Ingress Barrier:</b>	IP65 rated fully enclosed CRS cover, with 3mm clear acrylic lens.
<b>Life of LEDs:</b>	L70 50,000 hours		
<b>Warranty:</b>	Limited five (5) year warranty		

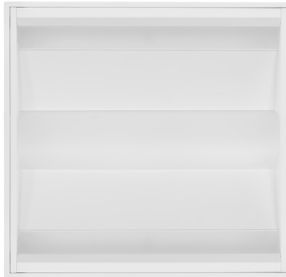
# Solar Series

## Eclipse 2 x 2 LED Light

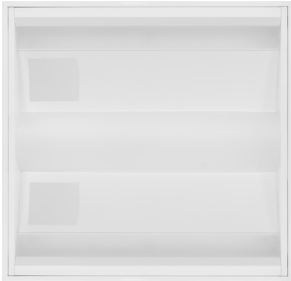


The **Solar Eclipse 2 x 2 LED Light** offers all the functionality of the 2 x 4 with a smaller environmental footprint. This fixture offers a convenient solution in areas where elements, such as patient lifts or pendant systems, limit ceiling space. This compact design provides visual comfort for patients while maximizing light output for clinicians to work effectively.

### Other Configurations



Ambient / Exam



Reading / Ambient / Exam





## Specifications

---

<b>Voltage:</b>	120 - 277 Volts	<b>Housing:</b>	20 Gauge CRS. One piece, seam-welded construction.
<b>Wattage:</b>	Total: 70 W Exam: 41 W Ambient: 20 W Reading: 9 W	<b>Finish:</b>	White urethane powder coat finish. 5 step treatment; antimicrobial finish.
<b>Light Output:</b>	Total: 7,530 lm Exam: 4,140 lm Ambient: 2,650 lm Reading: 740 lm	<b>Lens:</b>	High impact, LED specific acrylic.
<b>Dimming:</b>	0 - 10 Volts, Standard 5% dimming; contact factory for 1% dimming, DALI options available	<b>Light Source:</b>	Samsung LED mounted to aluminum core linear boards.
<b>Color Quality:</b>	Standard 80 CRI (contact factory for 90 CRI)	<b>Drivers:</b>	High power factor constant current, 0.97 pf @ 120 Volts (Class 2, Class II).
<b>Color Temperature:</b>	3000K, 3500K, 4000K (contact factory for more options)	<b>Optional Ingress Barrier:</b>	IP65 rated fully enclosed CRS cover, with 3mm clear acrylic lens.
<b>Life of LEDs:</b>	L70 50,000 hours		
<b>Warranty:</b>	Limited five (5) year warranty		

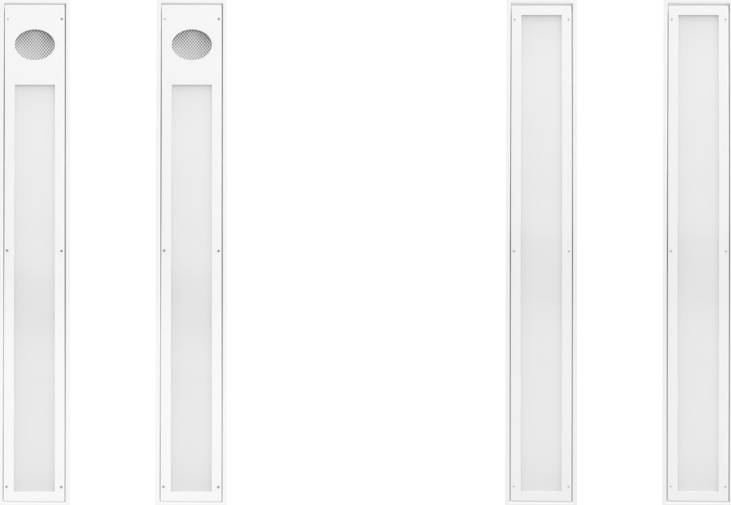
# Solar Series

## Duo Med LED Light



Create an environment that nurtures healing while maximizing clinical workflow efficiencies. The asymmetrical design of the **Duo Med LED Multifunction Light** makes it the ideal solution for areas where light can be obstructed by equipment such as booms, allowing for maximum light output onto the patient bed. The modern design provides visual comfort for patients and enables the clinician to perform their tasks with the highest degree of efficiency.

### Other Configurations



Reading (optional)

Exam / Ambient



## Specifications

<b>Voltage:</b>	120 - 277 Volts	<b>Housing:</b>	20 Gauge CRS. One piece, seam-welded construction.
<b>Wattage:</b> <b>*per fixture</b>	Total: 65 W Exam: 35 W Ambient: 25 W Reading: 5 W Total Pair: 130 W	<b>Finish:</b>	White urethane powder coat finish. 5 step treatment; antimicrobial finish.
<b>Light Output:</b> <b>*per fixture</b>	Total: 7,650 lm Exam: 4,200 lm Ambient: 3,000 lm Reading: 450 lm Total Pair: 15,300 lm	<b>Lens:</b>	IP65 rated fully enclosed CRS cover, with acrylic diffuser.
<b>Dimming:</b>	0 - 10 Volts, Standard 1% dimming; DALI options available	<b>Light Source:</b>	Samsung LEDs mounted on Aluminum Core PCB.
<b>Color Quality:</b>	Standard 80 CRI (contact factory for 90 CRI options)	<b>Drivers:</b>	High power factor constant current, 0.97 pf @ 120 Volts (Class 2, Class II).
<b>Color Temperature:</b>	3000K, 3500K, 4000K (contact factory for additional pairs)		
<b>Life of LEDs:</b>	L70 50,000 hours		
<b>Warranty:</b>	Limited five (5) year warranty		

# Solar Series

## Multifunction 2 x 4 LED Light



The **Solar Series Multifunction 2 x 4 LED Light** offers a traditional patient room lighting design in this multi-compartment ceiling fixture. The standard functions include Reading, Ambient, and Exam lighting with the option to add a Chart and Night light. A basket section provides general ambient lighting while the parabolic louvered lens provides direct and controlled exam lighting to support caregivers. Glare free lenses and reflectors cover all of the lighting functions and ensure patient comfort while maximizing clinical efficiencies.

### Other Configurations



Multifunction



Indirect Ambient



## Specifications

<b>Voltage:</b>	120 - 277 Volts	<b>Housing:</b>	20 Gauge CRS. One piece, seam-welded construction.
<b>Wattage:</b>	Total: 175 W Ambient: 49 W Exam: 99 W Reading: 27 W	<b>Finish:</b>	White urethane powder coat finish – 5 step treatment; antimicrobial finish.
<b>Light Output:</b>	Total: 20,517 lm Ambient: 5,824 lm Exam 11,646 lm Reading: 3,047 lm	<b>Lens:</b>	Exam: sliding semi-specular clear prismatic lens. Ambient: perforated steel with pearlescent acrylic diffuser.
<b>Dimming:</b>	0 - 10 Volts, Standard 5% dimming; contact factory for 1% dimming, DALI options available	<b>Light Source:</b>	Samsung LED mounted to Aluminum Core PCB.
<b>Color Quality:</b>	80 CRI Standard (contact factory for 90 CRI)	<b>Drivers:</b>	High power factor constant current, 0.97 pf @ 120 Volts (Class 2, Class II).
<b>Color Temperature:</b>	3000K, 3500K, 4000K	<b>Ingress Barrier:</b>	3 mm clear acrylic barrier covers the entire fixture using a piano hinge. Door frame secured to the housing and a closed cell neoprene/EPDM/SBR gasket seals the door frame to the housing.
<b>Life of LEDs:</b>	L70 50,000 hours		
<b>Warranty:</b>	Limited five (5) year warranty		

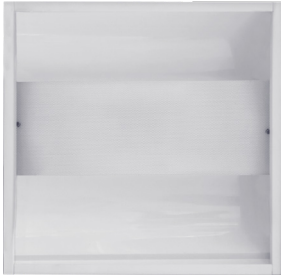
# Solar Series

## Ambient Indirect 2 x 2 LED Light

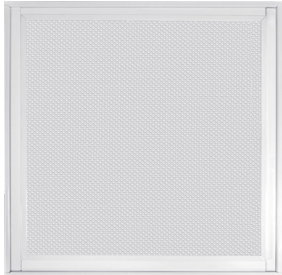


We designed the **Solar Series Ambient Indirect 2 x 2 LED Light** to provide you with optimal lumen output to meet all your general lighting requirements. This fixture comes with your standard Ambient function and an optional Night Light. With patient safety in mind, all of the LEDs are fully enclosed. The lenses and reflectors used offer clean, glare-free lighting to ensure maximum light output for caregivers to perform their tasks while creating a comfortable environment for the patient

### Other Configurations



Indirect Ambient



Exam (Prismatic Lens)



Reading / Indirect Ambient



## Specifications

<b>Voltage:</b>	120 - 277 Volts	<b>Housing:</b>	20 Gauge CRS. One piece, seam-welded construction.
<b>Wattage:</b>	Total: 70 W Ambient: 23 W Exam: 41 W Reading: 9 W	<b>Finish:</b>	White urethane powder coat finish. 5 step treatment; antimicrobial finish.
<b>Light Output:</b>	Total: 7,530 lm Exam: 4,140 lm Ambient: 2,650 lm Reading: 740 lm	<b>Lens:</b>	Sliding semi-specular clear acrylic prismatic lens.
<b>Dimming:</b>	0 - 10 Volts, Standard 5% dimming; contact factory for 1% dimming, DALI options available	<b>Light Source:</b>	Samsung LEDs mounted on Aluminum Core PCBs.
<b>Color Quality:</b>	80 CRI Standard (contact factory for 90 CRI)	<b>Drivers:</b>	High power factor constant current, 0.97 pf @ 120 Volts (Class 2, Class II).
<b>Color Temperature:</b>	3000K, 3500K, 4000K (contact factory for additional options)	<b>Optional Ingress Barrier:</b>	IP65 rated, fully enclosed CRS cover with 3 mm clear acrylic lens
<b>Life of LEDs:</b>	L70 50,000 hours		
<b>Warranty:</b>	Limited five (5) year warranty		

# Lunar **LED** Night Light



Blue



Amber



White 2700K



White 3000K



White 3500K

The **Lunar LED Night Lights** bring a soft, low level of illumination to the hospital room. This Night Light allows the clinical staff and patients to navigate safely through dark rooms. The unique faceplate has minimal protrusion from the wall and provides even light distribution. For ultimate convenience, the Lunar Night Light is available with optional photocell technology.

# Louvered **LED** Night Light



Amico's **Louvered LED Night Light** provides subtle lighting that is perfect for any healthcare environment.

Its energy-efficient LED lasts for 50,000 hours. The Louvered Series Night Lights are available in 2700K, 3000K, and 3500K soft white, amber, and blue colors.







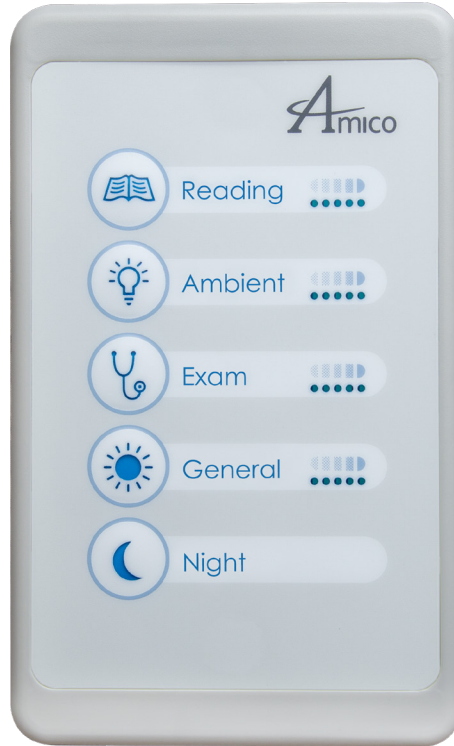
## Specifications

<b>Voltage:</b>	120 - 277 Volts	<b>Housing:</b>	Die-cast aluminum. Powder coated finish with 5-stage pre-treatment. Antimicrobial finish.
<b>Light Output:</b>	33.4 lm	<b>Lens:</b>	Frosted diffuser for a general light distribution. High impact-resistant, injection molded polycarbonate.
<b>Wattage:</b>	3.3 W	<b>Photo Control Options:</b>	Light sensor shall turn ON the LED light source when ambient light levels fall below 5fc ± 2fc and turn OFF when light levels are above 15fc ± 5fc. Performance may vary depending on location of ambient light sources, windows, room finishes and surrounding objects.
<b>Color Temperature:</b>	Blue, Amber, White: 2700K White: 3000K, White: 3500K	<b>Installation:</b>	Standard installation requires the back plate to be mounted to a NEMA, single-gang junction box (supplied by others).
<b>Life of LEDs:</b>	L70 50,000 hours	<b>Drivers:</b>	High power factor constant current, 0.97 pf @ 120 V (Class 2, Class II)
<b>Warranty:</b>	Limited five (5) year warranty	<b>Finish:</b>	Lunar Series: Matte White and Silver Aluminum. Louvered Series: Stainless steel and Matte white.

# LightMaster

---

## Multifunction Switch



Whether it be a single fixture or multiple fixtures, the **LightMaster Multifunction Switch** makes it easy for patients and clinicians to control the various fixture types required in the patient room. The intuitive keypad is entirely customizable and features backlit controls and LED indicators for ease of use. Our low-voltage device features a mylar overlay for ultimate infection control and fits conveniently in a single gang space.

### Full Communication Between Keypads

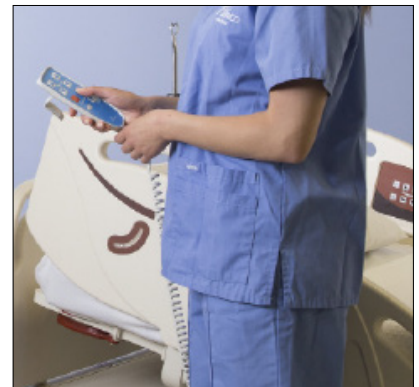
---



Lights Controlled at Patient Room Door



Lights Controlled at Headwall



Integrates with Nurse Call System and Pillow Speaker



## Specifications

<b>Input Voltage:</b>	120 - 277 Volts, 50/60Hz
<b>Output Voltage:</b>	120 - 277 Volts, 50/60Hz
<b>Maximum Load:</b>	2.5 amps Resistive, 1.8 amps Ballast at 120 Volts, 0.975 amps Resistive, 1.0 amp Ballast at 277 Volts
<b>Low Voltage Circuit:</b>	5VDC, 200 mA
<b>Operating Temperature:</b>	32°F - 176°F / 0°C - 80°C
<b>Master Control Dimensions:</b>	L 8" x W 2.6" x H 1.25"
<b>Secondary Control Dimensions:</b>	L 4.5" x W 2.6" x H 1.25"
<b>Keypad Dimensions:</b>	One (1) Gang
<b>Warranty:</b>	Limited five (5) year warranty

### Key Features of the Master Controller:

- Capable of individual control of up to five (5) circuit loads
- Universal input voltage of 120 – 277 Volts
- Terminal blocks allow for ease of connection
- Compact design fits inside most light fixtures
- 0 - 10 dimming capability when used with dimming drivers/ballasts
- Available with secondary power control unit

### Key Features of the Keypad:

- Controls up to five (5) light functions in the patient room
- Backlit icons identify which light function is in use
- Dimming indicator allows you to set the light at the desired level
- Keypads are low voltage for patient safety
- Compact design fits into a single gang opening
- Mylar overlay for ease of cleaning and infection control
- Compatible with all manufactured nurse call products

# Solar Series

## Surgical Luminaire LED Light



The **Solar Series Surgical Luminaire LED Light** is designed to be used as perimeter lighting in the Operating Room. These specialized luminaires provide supplementary illumination that allows clinicians to perform their tasks with a great deal of precision and accuracy. The Solar Surgical Luminaire offers high-level illumination and a color rendering index of 80 to 90+ to meet all the demands required in a surgical suite. The Symmetrical / Asymmetrical lens used is designed to reduce shadowing and glare. Optional Green LEDs can be used to optimize visibility by reducing glare and reflection on the monitor and minimizing eye strain for surgeons during long procedures.

### Other Configurations



1 x 4



2 x 2



2 x 4



Optional Green LED



## Specifications

<b>Voltage:</b>	120 - 277 Volts (contact factory for 347 Volts)	<b>Housing:</b>	20 Gauge CRS. One piece, seam-welded construction.
<b>Dimming:</b>	0 - 10 Volts and DALI options available	<b>Lens:</b>	IP65 rated fully enclosed CRS cover with asymmetrical/symmetrical acrylic lens. Optional RFI grid available.
<b>Color Quality:</b>	80 CRI, 90 CRI	<b>Finish:</b>	White urethane powder coat finish – 5 step treatment; hospital grade finishes and materials.
<b>Color Temperature:</b>	3000K, 3500K, 4000K	<b>Light Source:</b>	Samsung LEDs mounted on Aluminum Core PCB.
<b>Life of LEDs:</b>	L70 50,000 hours	<b>Optics:</b>	Symmetric/asymmetric reflectors diffused for glare free operation.
<b>Size Options:</b>	1' x 4' x 4" / 2' x 2' x 4" / 2' x 4' x 4" fits into a standard ceiling grid layout	<b>Drivers:</b>	High power factor constant current, 0.97 pf @ 120 V (Class 2, Class II).
<b>Warranty:</b>	Limited five (5) year warranty		

# Solar Series Cleanroom

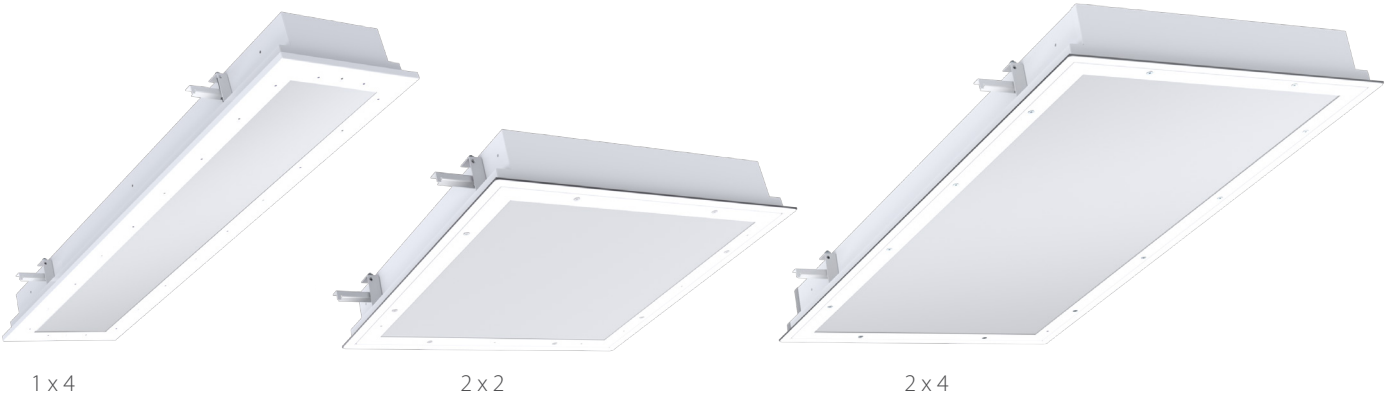
## Cleanroom 2 x 4 LED Light



The **Solar Series Cleanroom LED Light (CLS)** by Amico is a recessed IC-rated IP65 luminaire suitable for ISO Class 3 grid or flanged cleanroom applications. This wet location luminaire features an inset or overlapping door with a triple gasket for a reliable seal. Available with NSF/ANSI 2 for Food Zone, Splash Zone and Non-Food Zone Applications.

The Solar Series Cleanroom fixtures are available in 2 x 4, 2 x 2, and 1 x 4 models.

### Other Configurations



1 x 4

2 x 2

2 x 4

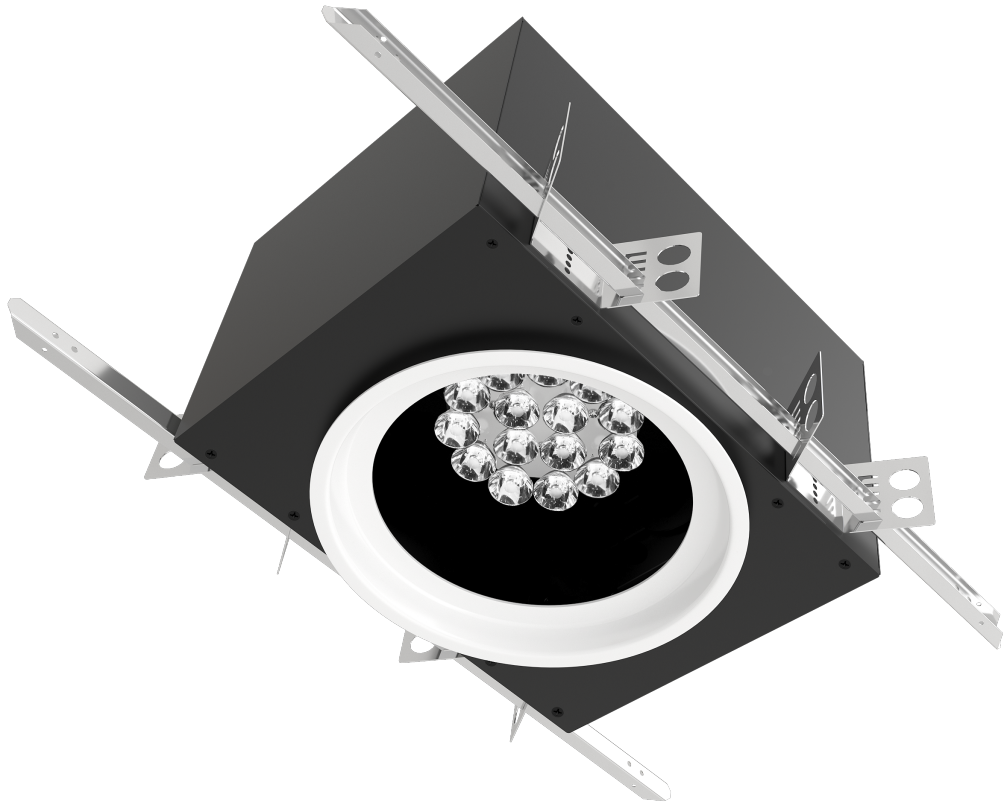


## Specifications

<b>Voltage:</b>	120 - 277 Volts	<b>Housing:</b>	Precision formed, TIG welded, 20 gauge cold rolled steel housing with no visible, external hardware. Other options available. Finish: White, polyester powder painted housing.
<b>Wattage:</b>	Option 1: 45W Option 2: 59W Option 3: 80W Option 4: 99W Option 5: 143W Option 6: 198W	<b>Finish:</b>	White, polyester powder painted housing.
<b>Light Output:</b>	Option 1: 5,500 lm Option 2: 7,000 lm Option 3: 10,000 lm Option 4: 12,000 lm Option 5: 18,000 lm Option 6: 24,000 lm	<b>Lens:</b>	Symmetric optics includes diffused impact resistant acrylic lens. Lens sealed to doorframe with continuous retention system and supported with stainless steel aircraft cables.
<b>Dimming:</b>	0-10 Volts; DALI options available	<b>Mounting:</b>	Flange installation is supported by swing style mounting brackets. Grid installation suitable for 1" and 1.5" T-bar ceilings. Additional T-Bar support options available.
<b>Color Quality:</b>	80 CRI, 90 CRI	<b>Ingress Barrier:</b>	One piece door frame, fabricated from 18 gauge, cold rolled steel with TIG welded corners. It is retained by stainless steel aircraft cables. Flat head, stainless steel, captive fasteners with integral silicone O-rings easily secure door frame to housing. Gasket seals door frame to housing.
<b>Color Temperature:</b>	3500K, 4000K, 5000K (contact factory for optional red LED array)	<b>Listings:</b>	UL listed for insulated ceilings, wet locations. Suitable for 2500psi pressure spray down. All electrical components are CSA or UL approved.
<b>Life of LEDs:</b>	L80>50,000 hours		
<b>Warranty:</b>	Limited five (5) year warranty		

# Motorized Exam Lighting

## Nova Motorized LED Exam Light



The **Nova LED Motorized Light** is a fully recessed exam light and can be used in various settings throughout the hospital environment. This fixture provides a safe alternative to ceiling-mounted exam lighting and offers a convenient solution in low-ceiling areas. Its precisely positioned LEDs and 360 degrees of rotation allow for increased illumination and superior shadow control to support caregivers with advanced visual acuity. The Nova can be installed in multiple configurations within the room to maximize light output and enhance clinical efficiencies. This versatile fixture is ideal for Labor & Delivery, Patient Rooms, Intensive Care Units, Emergency Departments, and many more.



### Nova Wall Control Keypad

Our innovative backlit wall control keypad offers precise and convenient control of light intensity and direction. Control up to two fixtures on one keypad with easy-to-use tactile buttons and customizable dimming. The wall control keypad is designed with a Mylar cover for ease of cleaning and infection control.





## Specifications

<b>Voltage:</b>	120 - 277 Volts	<b>Housing:</b>	20GA CRS Carbon steel
<b>Wattage:</b>	65W	<b>Finish:</b>	Matte black paint finish – 5 step treatment; hospital grade material and finish
<b>Light Output:</b>	Refer to Ceiling Chart below	<b>Listings:</b>	Conforms to: AAMI STD ES60601-1, IEC STD 60601-1-6, IEC STD 60601-2-41 Certified to: CSA STD C22.2 No.60601-1
<b>Angle of Illumination:</b>	30 Degrees		
<b>Color Quality:</b>	95+ CRI		
<b>Ingress Protection:</b>	IP65		
<b>Color Temperature:</b>	3000K, 3500K, 4000K		
<b>Life of LEDs:</b>	L70 50,000 hours		
<b>Warranty:</b>	Limited five (5) year warranty		

## Ceiling Chart

Ceiling Height	Light Output in LUX at Nadir	Light Output at Extreme Position	Max Setback
10'	52,200	28,542	3'9"
9'6"	56,800	31,624	3'6"
9'	61,500	36,180	3'2"
8'6"	65,900	38,860	2'11"
8'	70,300	42,880	2'7"

# Exam and Procedure Lighting

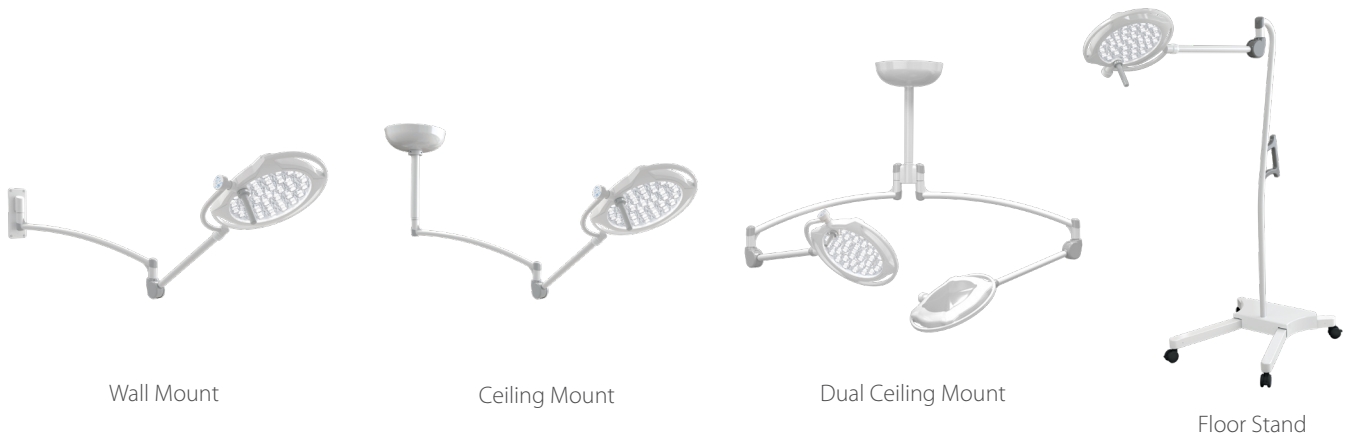
## Mira 50, 65 & 90 LED Light



Optional Wall Control Keypad\*

The **Mira Series LED Light** offers the latest advancements in minor procedure and examination lighting. Its 36 precisely positioned LEDs provide superior shadow control, depth of field, and light intensity to provide caregivers with advanced visual acuity. Clinicians can easily customize light intensity with five levels of dimming and an endo mode conveniently located on the light head for easy access. The Mira's removable handle is ergonomically positioned off to the side to maximize the light field and can be rotated to electronically focus the light beam to a concentrated 6" for more targeted surgical procedures. Our Mira Series LED Exam lights come in 50,000, 65,000 and 90,000 Lux options and offer a CRI of 95+ for advanced color accuracy.

### Configurations



\*The Wall Control Keypad is compatible with single ceiling mount and wall mount options.

# Exam and Procedure Lighting

## Vega 80 LED Light



The **Vega 80 LED Light** offers a powerful and compact procedure examination light that can be used in various applications throughout the hospital environment. Small workplaces are no challenge for the Vega 80 which offers a small environmental footprint and flexible mounting options for ultimate convenience. Its 18 precisely positioned LEDs provide 80,000 lux of high-quality illumination to support caregivers with advanced visual acuity, while a color temperature of 4500K and 95+ CRI allows for greater precision and color accuracy. Clinicians can easily customize light intensity with five levels of dimming and an endo mode functionality located on the light head for easy access

### Configurations



Ceiling Mount



Wall Mount



Floor Stand

# Task Lighting and Magnifier



## Clarity 30 LED Light

The **Clarity 30 LED** is a cost-effective solution for any patient room task lighting needs. With a 7" diameter light field and illumination intensity up to 30,000 lux, the Clarity 30 is perfect for everyday use. The articulating arm and variable dimming functions allow for easy positioning and maneuverability.



## Magna 51 LED Magnifier

The **Magna 51 Illuminated Magnifier** was designed to make highly demanding visual tasks easier. Premium LEDs illuminate the viewing area through a wide-angle, distortion-free lens. Easily customize light intensity with 10%-100% dimming capabilities on our easy to operate touch panel, conveniently located on the luminaire head. The Magna 51's balanced arm technology and independent swivel joints allow for easy adjustment and precise positioning of the magnifier. A color rendering index of 90 makes it easy for clinicians to differentiate between tissues during general examinations.

# Exam Lighting

## Gamma 50 LED Light

Small but mighty, the **Gamma 50 LED** can be used in various settings throughout the hospital and is most suitable for minor examinations. Its compact and innovative design allows for maximum light output without sacrificing functionality. The maintenance-free LED's provide 50,000 Lux of light, a CRI of 95+, and a color temperature of 4500K for exceptional color accuracy. A capacitive touch keypad is located on the back of the light for ultimate convenience.



## Gamma 60 LED Light

Powerful LED's provide 60,000 Lux in this innovative exam light. The **Gamma 60 LED** is maintenance free and suitable for any type of exam room. The light comes with four dimming levels, two color shades, an antimicrobial finish and a 360° rotary lighthead. The Gamma 60 LED can be ceiling mounted, rail mounted or on a roll stand to meet all your room requirements.



# Solar Series

## MRI Suite LED Solutions

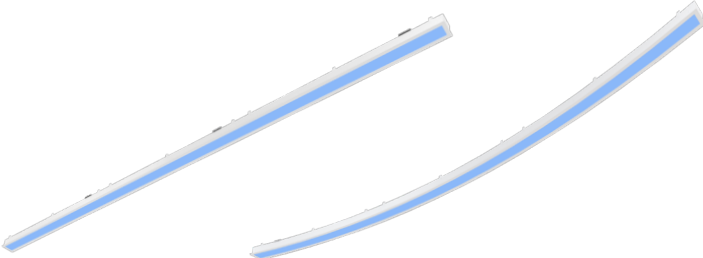
Amico is proud to present our portfolio of MRI lighting solutions designed for an Enhanced Patient Experience. Choose any combination of lighting products to create your ideal design, or request a custom design project. All of our fixtures are certified to meet MRI vendor EMI requirements making them an ideal choice for any MRI suite.



MRI LED Illuminated Image Wall Fixtures



MRI Image Ceiling Panels



MRI Recessed Slot Lighting



MRI Down Lighting



RGB Wall Mounted Touch Controller

Visit [amico.com](http://amico.com) for more information about our MRI Series of lights







Amico Lights Corporation | 122-B East Beaver Creek Road, Richmond Hill, ON L4B 1G6, Canada  
Toll Free Phone: 1.877.462.6426 | Toll Free Fax: 1.866.440.4986 | Tel: 905.764.0800 | Fax: 905.764.0862  
Email: [info@amico.com](mailto:info@amico.com) | [www.amico.com](http://www.amico.com)

Represented By:

