

Installation Guide

RF Facility Filter

MRI Compatible

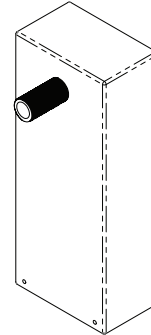
Important Safety Instructions

When using electrical equipment, basic safety precautions should always be followed including the following:

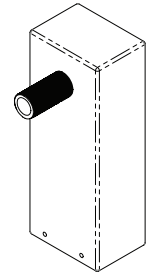
Read And Follow All Safety Instructions

- Warning:** This product must be installed in accordance with the NEC or your local electrical code. If you are not familiar with these codes and requirements, consult a qualified electrician. *Attention: Ce produit doit être installé conformément au NEC ou à votre code électrique local. Si vous n'êtes pas familier avec ces codes et exigences, consultez un électricien qualifié.*
- Warning:** This equipment is not for use in hazardous combustible atmospheres as defined by the National Electrical Code. *Avertissement: Cet équipement ne doit pas être utilisé dans des atmosphères combustibles dangereuses telles que définies par le National Electrical Code.*
- Danger:** Risk of shock - Disconnect power before installation. *Danger: Risque de choc – Couper l'alimentation avant l'installation.*
- Caution:** Do not over torque. Refer to labeling specifications for torque (Nm) specifications. *Attention: ne pas trop serrer. Se référer aux spécifications d'étiquetage pour les spécifications de couple (Nm).*

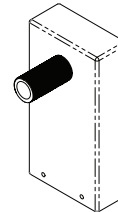
3-01-00008
30A 2-Wire Facility Filter



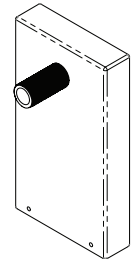
3-01-00010
1A 2-Wire Facility Filter



3-01-00011
0.5A 2-Wire Facility Filter



3-01-00007
15A 4-Wire Facility Filter



Save These Instructions For Future Reference

Installation:

Diagram 1 - Shielding in Equipment Room

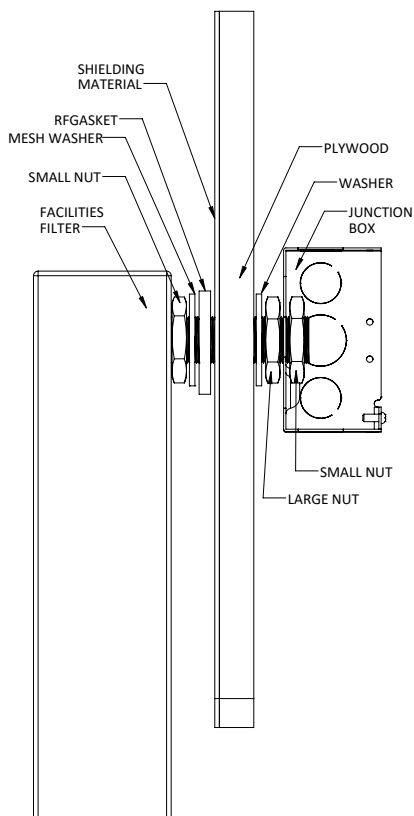
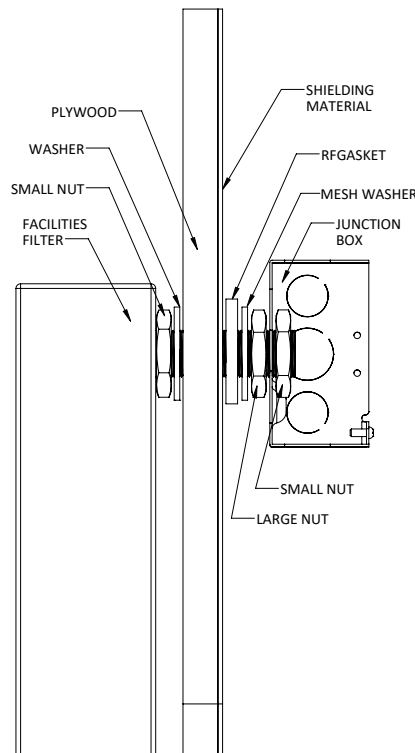


Diagram 2 - Shielding in MRI Room



NOTE: The RF Facility Filter must be installed in the EQUIPMENT ROOM. Two people will be required for the installation, one to hold the RF Facility Filter in place in the EQUIPMENT ROOM and one person to secure the RF Facility Filter in the SCAN ROOM.

Step 1:

The Male Threaded Adapter measures 1 inch x 2 inches. Drill a 1 inch diameter hole in the intended mounting surface of the equipment room ensuring there is enough clearance to mount the RF Facility Filter.

Step 2:

Note whether the Shielding Material of the wall is facing the Equipment Room or the MRI Room, this will determine how to secure the RF Facility Filter in place. Reference **Diagram 1 or 2** depending on the wall construction. Secure the RF Facility Filter by using the supplied hardware as shown in **Diagram 1 or 2**.

Step 5:

Reference the project specific plans for complete wiring instruction to make the appropriate **Electrical Connections**.

Electrical Connections:

Note:

Ground MUST be connected before power is turned on.

Step 1:

Connect ground (PE) in filter junction box to MRI ground lug located on the penetration panel.

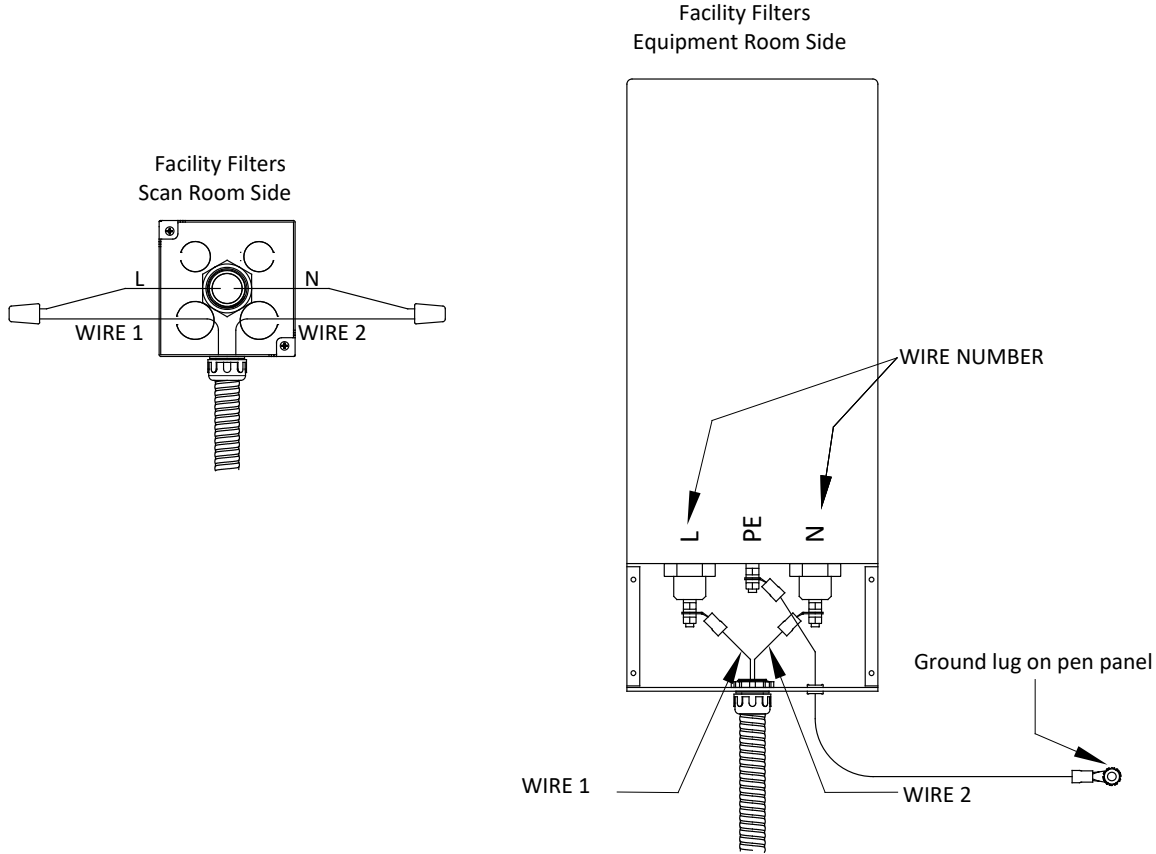
Step 2:

Connect wires line (L) wire and neutral (N) wire on Equipment room side.

Step 3:

Connect wires line (L) wire and neutral (N) wire on Scan room side.

Diagram 3 - Electrical Connections



Directive 2012/19/EU (WEEE - Waste Electrical and Electronic Equipment): Information for Users

This product complies with EU Directive 2012/19/EU. The crossed out wheeled bin symbol on the article means that at the end of its useful lifespan, this product must not be disposed of with your other household or municipal waste. This product has required the extraction and use of natural resources for its production. It may contain hazardous substances that could impact health and the environment if not properly disposed. In order to avoid dissemination of those substances in our environment and to diminish the pressure on the natural resources, the user is responsible for delivering the appliance to an appropriate collection facility at the end of its useful lifespan. The separate collection and recycling of your waste equipment at the time of disposal will help conserve natural resources and ensure that it is recycled in a manner that protects human health and the environment. For more information on available collection facilities contact your local waste collection service or the place of purchase.

For informational purposes only. Content is subject to change.