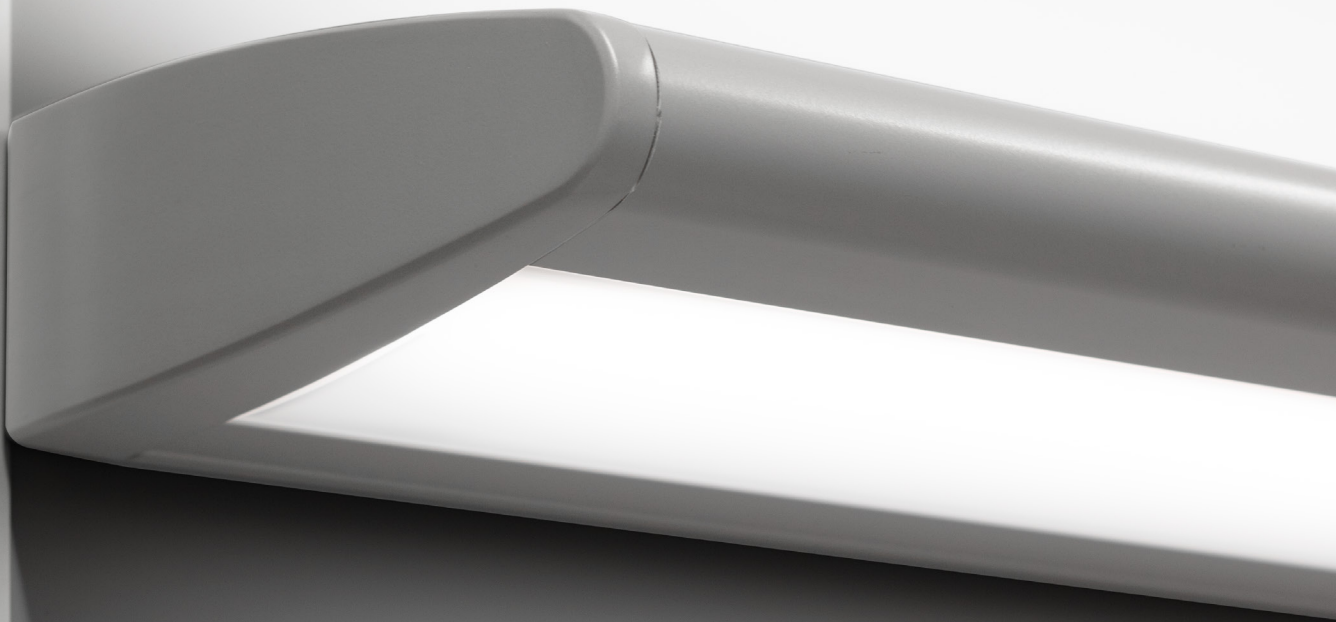


Skyline LED  
Overbed Light



*A*mico



## Skyline Overbed LED Light

The Skyline Series Overbed LED Light offers a modern design to elevate any patient room, new or retrofit. The two-up, two-down configuration provides up to four lighting functions to meet the needs of the patient and the caregiver. High-quality exam lighting supports the clinician with optimal light output, while the soft reading, ambient, and night light functions provide additional comfort that facilitate patient healing.

### Lighting Functions



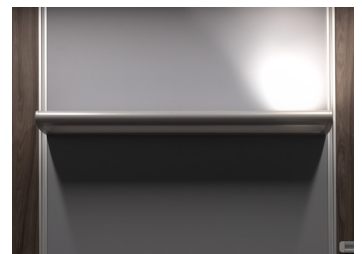
**Ambient**  
3,321 lm



**Reading**  
2,739 lm

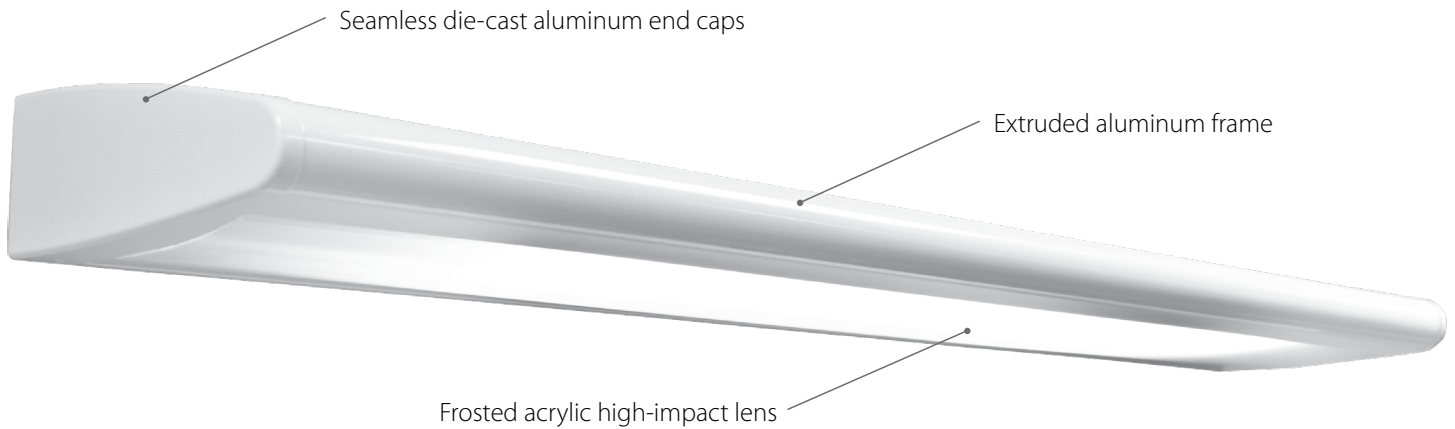


**Exam**  
3,950 lm



**Night Light**

# Designed for the Healthcare Environment



Designed to withstand everyday wear and tear in the healthcare setting, the Skyline balances durability and performance. Its airplane-wing-inspired design comes 9" off the wall to maximize the throw of light onto the patient bed for optimal visibility. The solid extruded aluminum frame, seamless die-cast aluminum end caps, and a high-impact frosted acrylic lens makes the Skyline resilient in the hospital environment.



**WATTAGE**  
Total: 112.3 W



**LUMEN**  
Total: 9,964 lm



**DIMMABLE**  
0-10V Dimming  
DALI Option available



**CRI**  
80 & 90 CRI



**COLOUR TEMP**  
3000K - 4000K



**LENGTH**  
2ft, 3ft & 4ft Lengths



# Three-Step Installation

- 1

Mount


- 2

Hinge


- 3

Connect



## Lighting Controls



Low voltage controls with nurse call and pillow speaker integration



Pull Chain with 4 or 2 Position



Rocker Switch



Wall Control



Multifunction Switch

Amico Lights Corporation  
 122-B East Beaver Creek Road, Richmond Hill, ON L4B 1G6, Canada  
 Toll Free Phone: 1.877.462.6426 | Toll Free Fax: 1.866.440.4986  
 Tel: 905.764.0800 | Fax: 905.764.0862  
 Email: info@amico.com | www.amico.com

Visit [amico.com](http://amico.com) for more information about our **Skyline LED Overbed Light**

