

Slimline Series

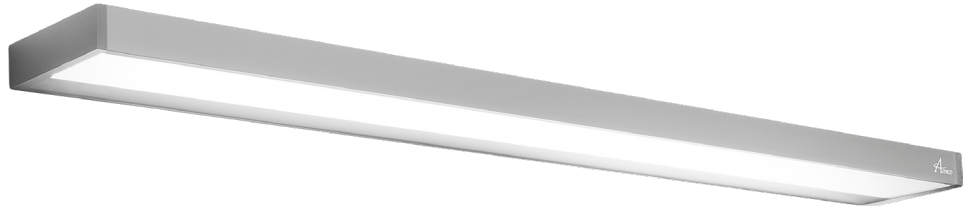
Overbed LED Light

Description:

The Slimline Overbed Light is designed with the patient's needs in mind. The minimalist patient room luminaire incorporates the latest LED edge-lit technology to deliver outstanding visual comfort and uniform distribution. Soft reading and ambient function ensure patient satisfaction and support the healing process. To further support patient recovery, the luminaire features seam-free surfaces and clean edges to eliminate dust traps for easy cleaning and infection control.

Features:

- Available in 2', 3', and 4' length options
- Hospital-grade materials and finishes for easy cleaning and infection control
- Includes reading and ambient functions
- Ultra-smooth light diffusion with high glare control
- Etch clear anodized finish with seamless end caps
- Unique hinge design on mounting plate for single-person installation
- Various switching options to meet any patient room requirements



Construction Material:

Housing: Marine Grade Aluminum Extrusion. Unique hinge design on mounting plate for single man install.

Finish: Etch clear anodized finish.

Lens: Ultra smooth diffusion achieved through edge-lit technology.

Light Source: Samsung LED mounted to aluminum core linear boards.

Drivers*: High power factor constant current, 0.97 pf @ 120 V (Class 2, Class II).

Length Options: 2' (24" / 610 mm), 3' (36" / 914 mm), 4' (48" / 1219 mm).

Specifications:

Voltage: 120 - 277 Volts.

Wattage (4' version): Reading: 32 W, Ambient: 42 W, Total: 74 W.

Light Output (4' version): Reading: 2,875 lms, Ambient: 3,615 lms, Total: 6,490 lms.

Dimming: 0 - 10 Volts.

Color Quality: Standard 80 CRI; consult factory for 90 CRI.

Color Temperature: 3000K, 3500K, 4000K.

Life of LEDs: L70 >100,000 hours.

Listings: Certified to UL standards for dry/damp locations by ETL. Conforms to CSA standards for dry/damp locations as per ETL testing.

Warranty: Limited five (5) year warranty.

*If required, Low Voltage Controller can be installed separately outside the fixture.

Slimline Series Overbed LED Light

Ordering Guide:

L - SLM -



For Example: L-SLM-2-120-LED30-1/1-000-00

Slimline Series, 2', 120 V, 3000 Kelvin, 1 Up / 1 Down, No switch, No options

Ordering Information:

| Series | Length (feet) | Voltage | Colour Temperature | Lamp Configuration | Switching | Options |
|--------|---------------|---------------|--------------------|--------------------|--|---------------|
| L-SLM | 2 | 120 120 Volts | LED30 3000K | 1/1 1 up / 1 down | 000 No switch | 00 No options |
| | 3 | 277 277 Volts | LED35 3500K | | 1PC One pull chain | |
| | 4 | | LED40 4000K | | 2PC Two pull chains | |
| | | | | | 1PR One pull chain & one rocker switch | |
| | | | | | 1RS One rocker switch | |
| | | | | | 2RS Two rocker switches | |

Dimensions:

