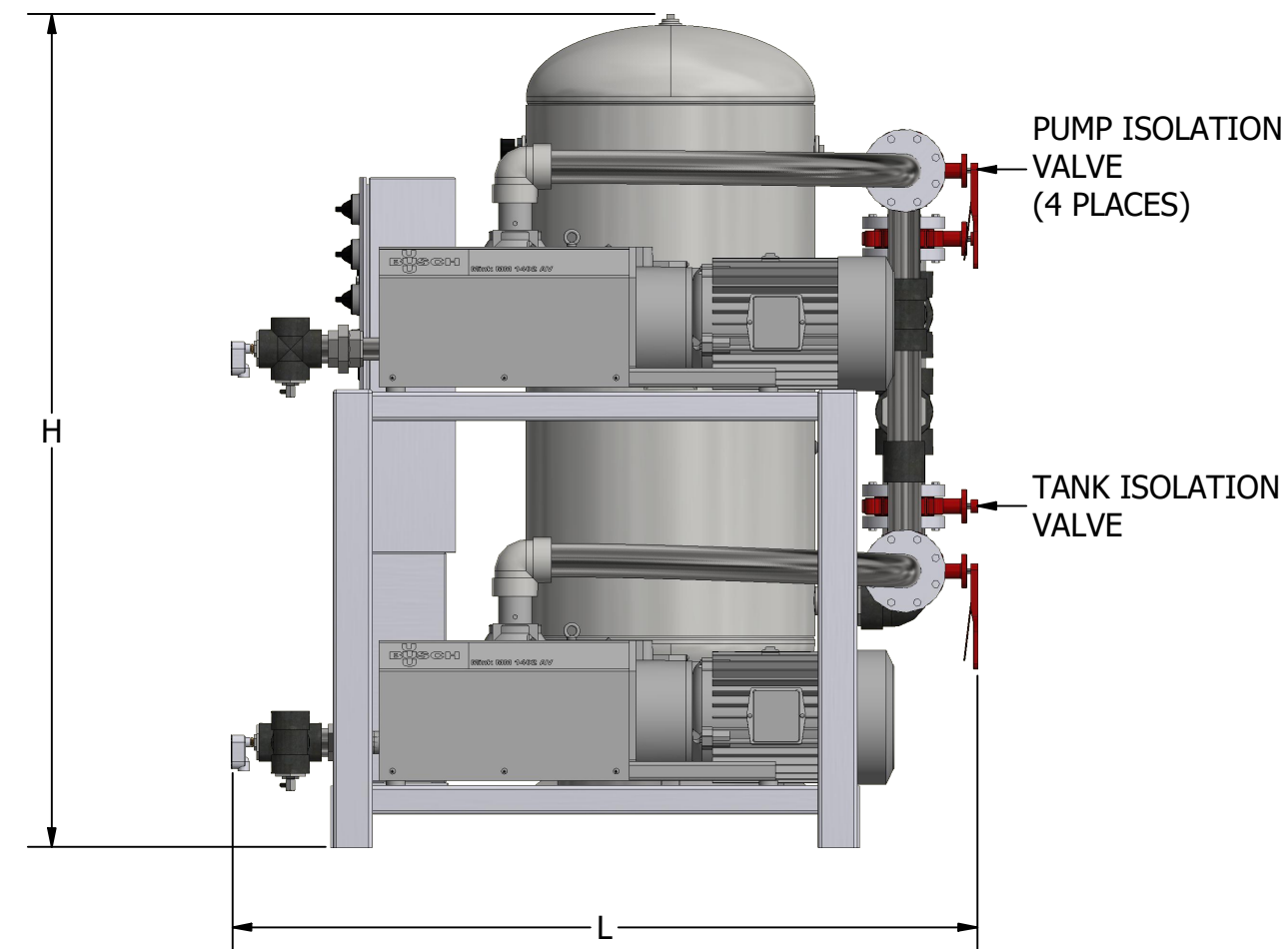
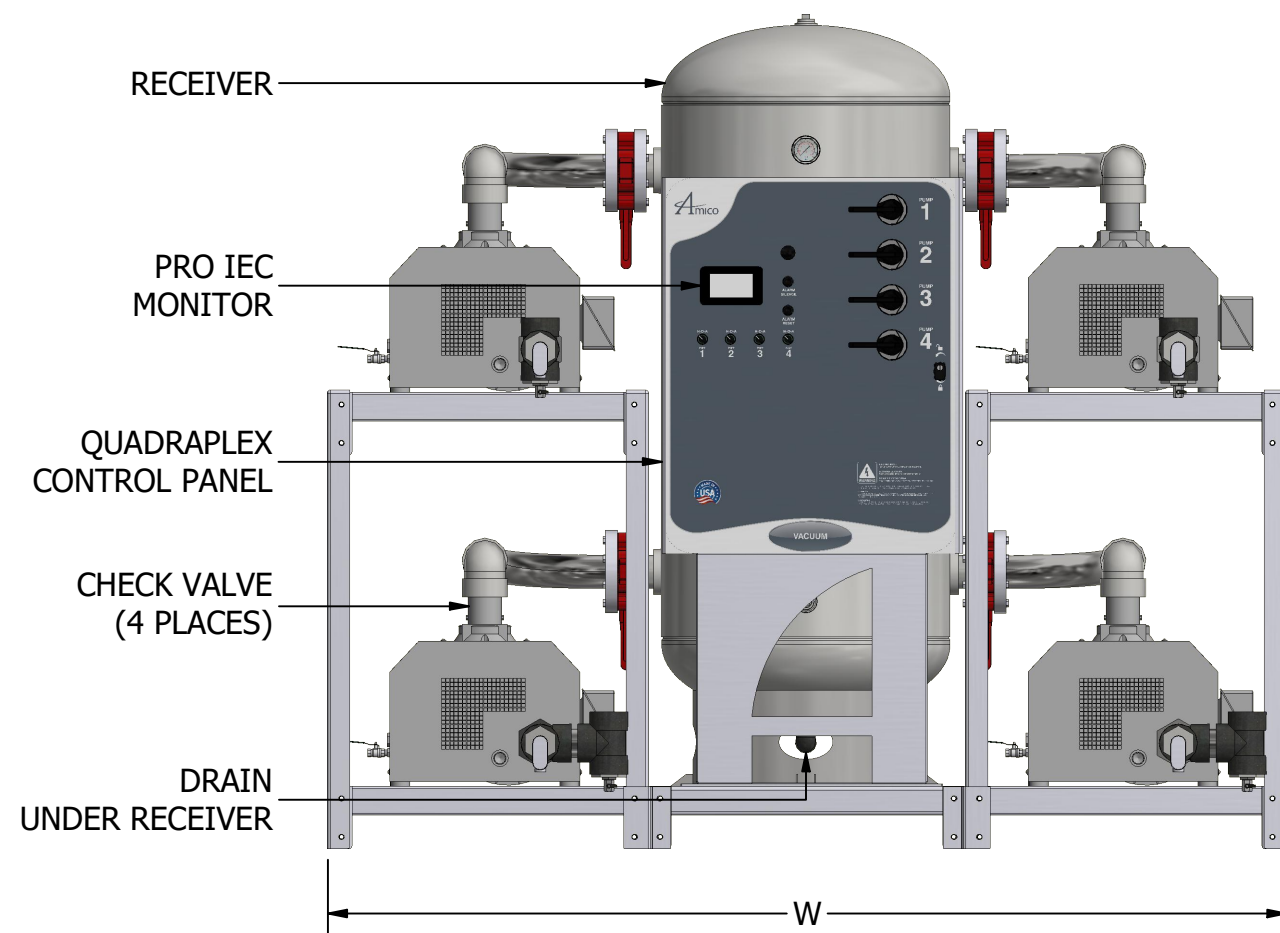
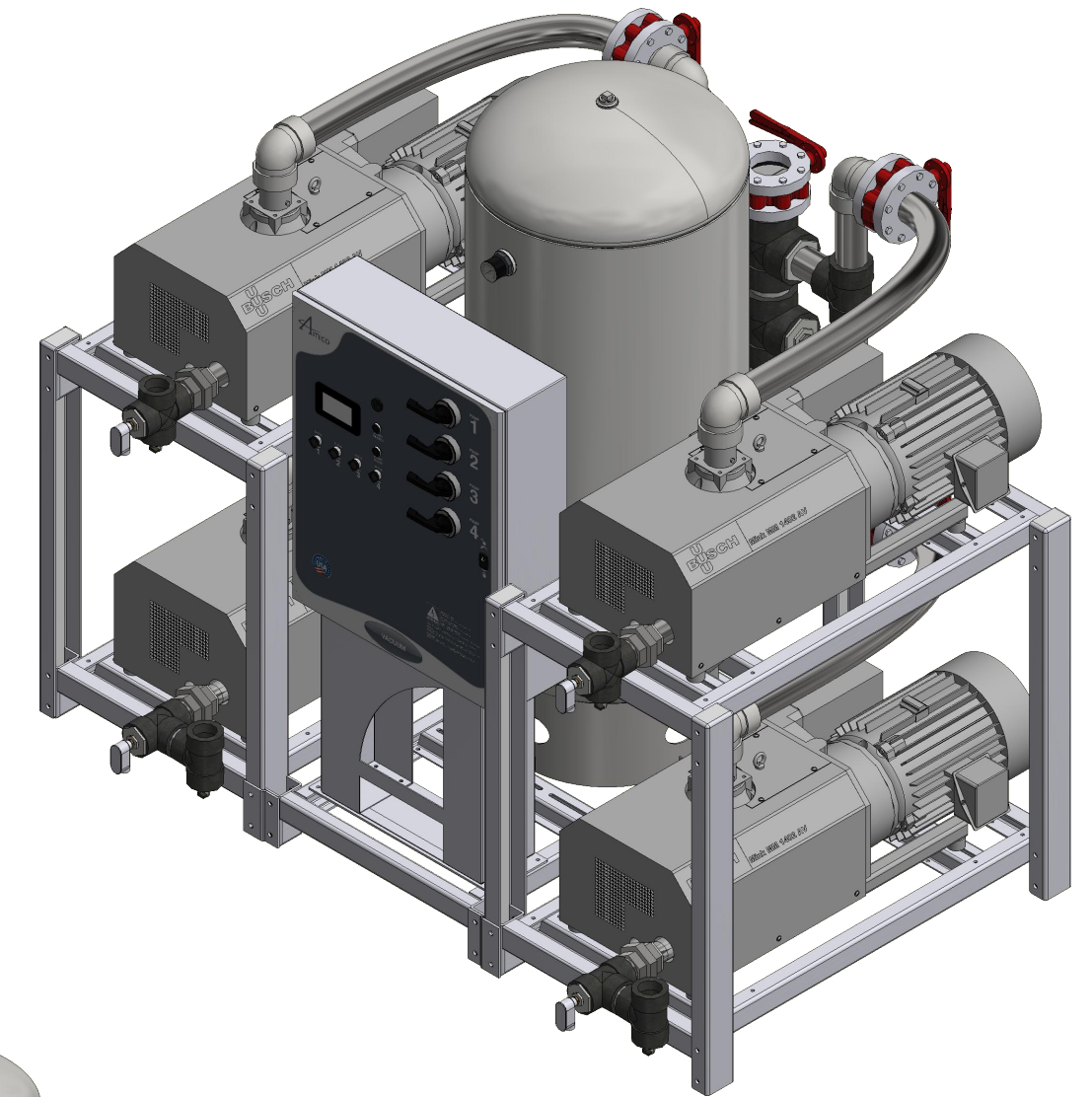
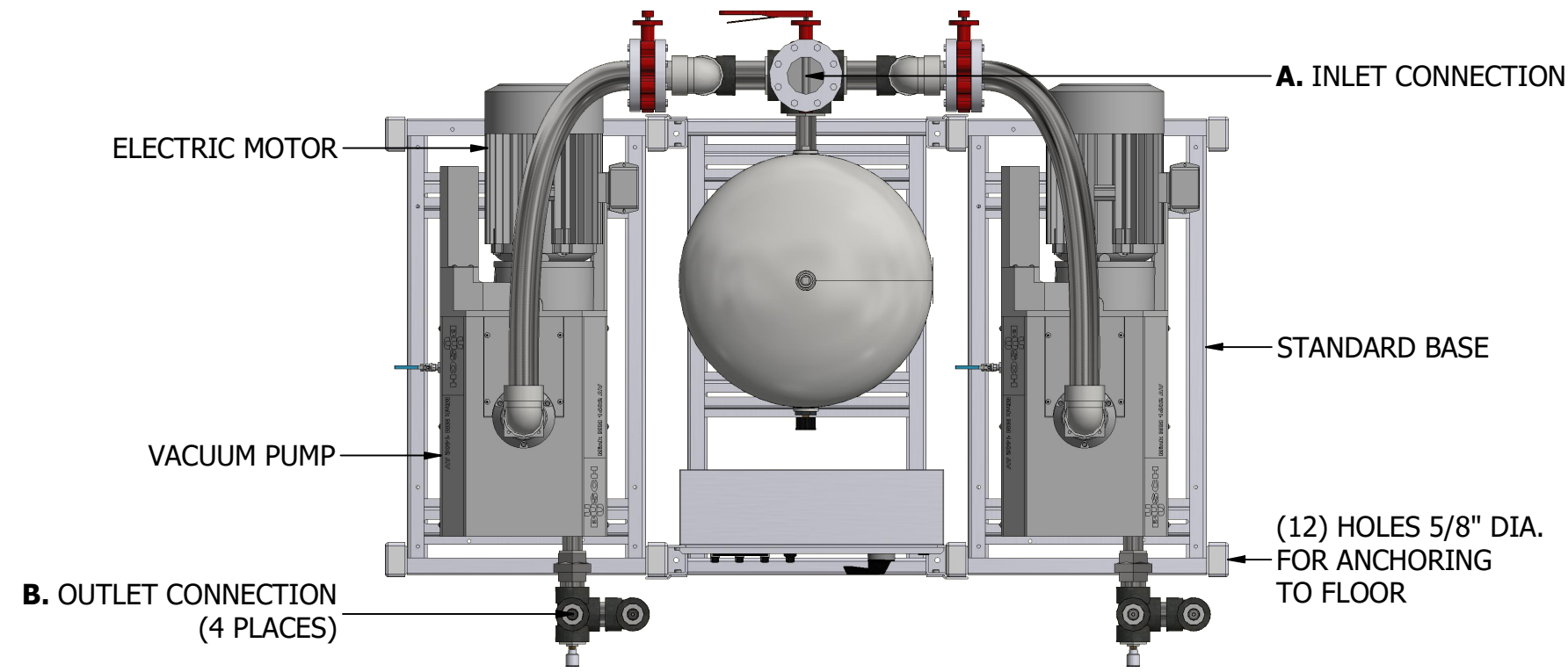


CONTACTLESS CLAW - DRY QUADRUPLEX STACK MOUNTED VACUUM SYSTEM (2.0 HP - 15.0 HP)



DIMENSIONS SUBJECT TO CHANGE WITHOUT NOTICE

MODEL	HP (kW)	A INLET NPT	B OUTLET NPT	TANK SIZE GALLON (LITRE)	PUMP SCFM @ 19" HG (LPM)		NFPA SYSTEM CAPACITIES WITH ONE COMPRESSOR ON STANDBY @ 19" HG (LPM)		WEIGHT IN LBS (KG)	SQ. FT. REQUIRED (M ²)	SYSTEM FLA (WITH ALL PUMPS RUNNING)				SYSTEM BTU/HR	SOUND LEVEL dB (A)	W (M)	L (M)	H (M)
					50 Hz Motor	60 Hz Motor	50 Hz Motor	60 Hz Motor			208V	230V	380V**	460V					
V-CCD-Q-200P-SS-N-020*	2 (1.49)	2.0	1.5	200 (757)	13.3 (377)	16.0 (453)	39.9 (1130)	48.0 (1359)	3360 (1544)	38.6 (3.60)	29	26	15	13	15,267	75	101 (2.57)	55 (1.40)	91 (2.31)
V-CCD-Q-200P-SS-N-030*	3 (2.24)	2.0	1.5	200 (757)	17.5 (496)	21.0 (595)	52.5 (1487)	63.0 (1784)	3404 (1544)	38.6 (3.60)	42	38	19	19	22,899	75	101 (2.57)	55 (1.40)	91 (2.31)
V-CCD-Q-200P-SS-N-040*	4 (2.98)	2.0	1.5	200 (757)	24.2 (685)	29.0 (821)	72.6 (2056)	87.0 (2464)	3360 (1524)	38.6 (3.60)	46	41	22	20	30,534	84	101 (2.57)	55 (1.40)	91 (2.31)
V-CCD-Q-200P-SS-N-050	5 (3.73)	2.0	1.5	200 (757)	31.7 (898)	38.0 (1076)	95.1 (2693)	114.0 (3228)	3404 (1544)	38.6 (3.60)	56	50	22	25	38,166	84	101 (2.57)	55 (1.40)	91 (2.31)
V-CCD-Q-200P-SS-N-064*	6.4 (4.77)	4.0	1.5	200 (757)	43.3 (1226)	52.0 (1472)	129.9 (3678)	156.0 (4417)	3800 (1724)	38.6 (3.60)	70	67	38	34	48,852	84	101 (2.57)	61 (1.55)	91 (2.31)
V-CCD-Q-200P-SS-N-075*	7.5 (5.59)	4.0	1.5	200 (757)	54.2 (1535)	65.0 (1841)	162.6 (4604)	195.0 (5522)	3844 (1744)	38.6 (3.60)	92	73	40	36	57,249	84	101 (2.57)	73 (1.85)	91 (2.31)
V-CCD-Q-200P-SS-N-090*	9 (6.71)	4.0	2.0	200 (757)	64.2 (1818)	77.0 (2180)	192.6 (5454)	231.0 (6541)	4152 (1883)	45.6 (4.24)	96	85	46	42	68,700	87	101 (2.57)	78 (1.98)	91 (2.31)
V-CCD-Q-200P-SS-N-100*	10 (7.46)	4.0	2.5	200 (757)	72.5 (2053)	87.0 (2464)	217.5 (6159)	261.0 (7391)	4552 (2065)	52.6 (4.89)	113	98	58	49	76,332	88	101 (2.57)	83 (2.11)	91 (2.31)
V-CCD-Q-200P-SS-N-150*	15 (11.2)	4.0	2.5	200 (757)	107.5 (3044)	129.0 (3653)	322.5 (9132)	387.0 (10959)	4596 (2085)	59.9 (5.56)	166	144	60	72	114,501	87	101 (2.57)	83 (2.11)	91 (2.31)

*SYSTEM CONFIGURATION DIFFERS FROM MODEL SHOWN

**380 VOLT DATA PROVIDED AT 50HZ
ALL OTHER VOLTAGES ARE RATED AT 60HZ

ADDITIONAL MODELS AVAILABLE UPON REQUEST



600 Prime Place, Hauppauge
NY 11788, USA
Direct Tel: 905.764.0800
Tel: 1.877.462.6426
Fax: 1.866.440.4986