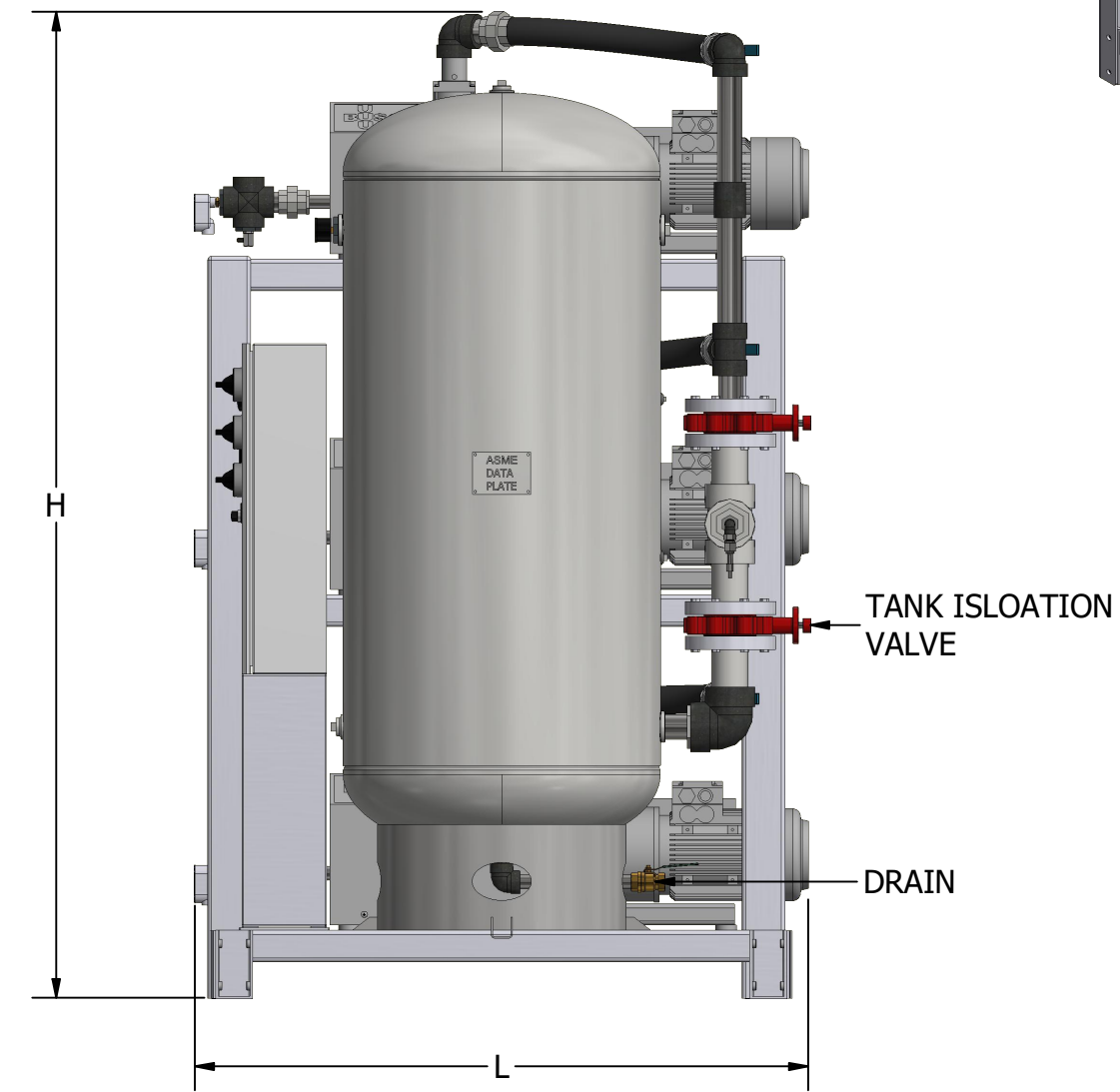
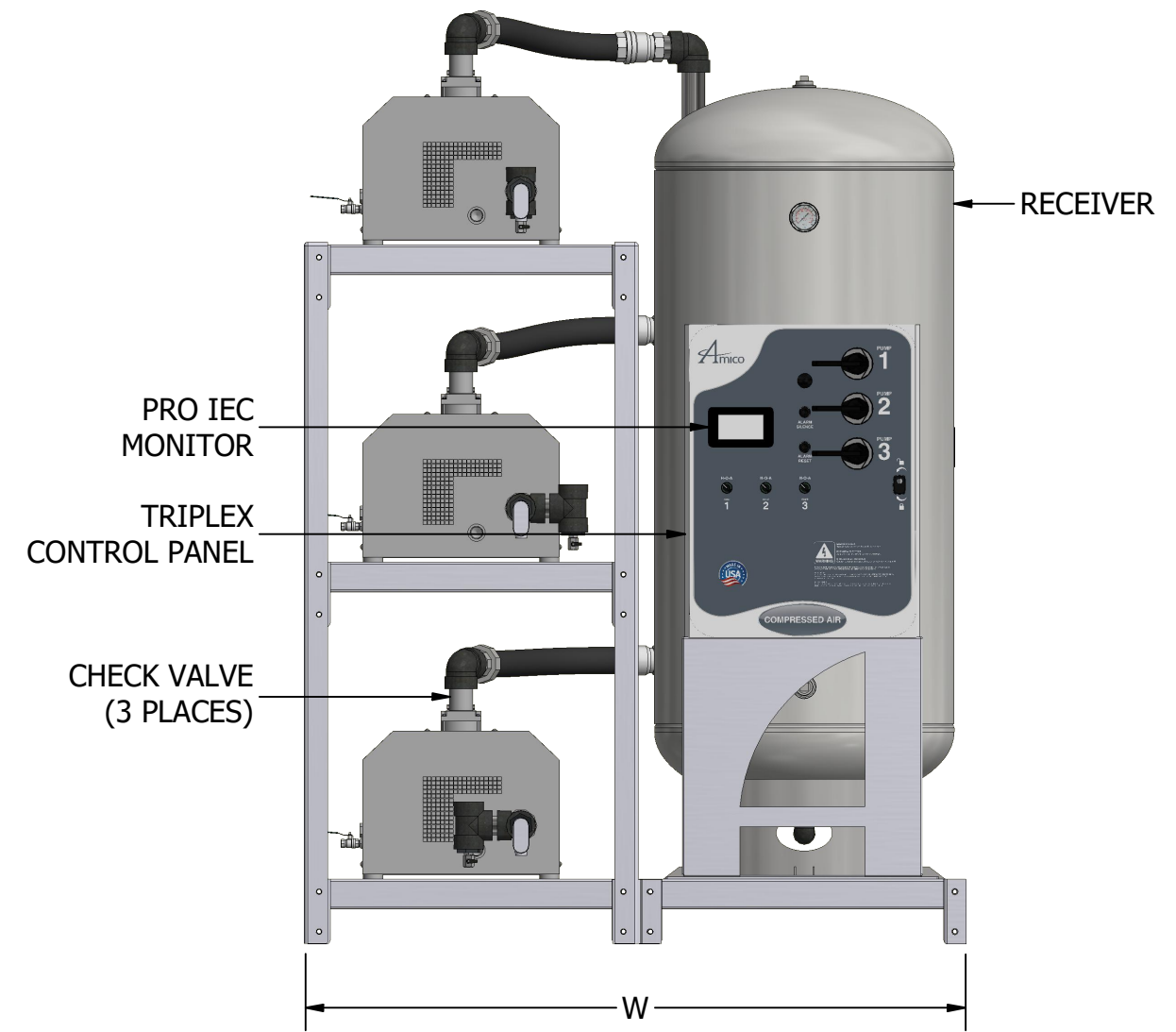
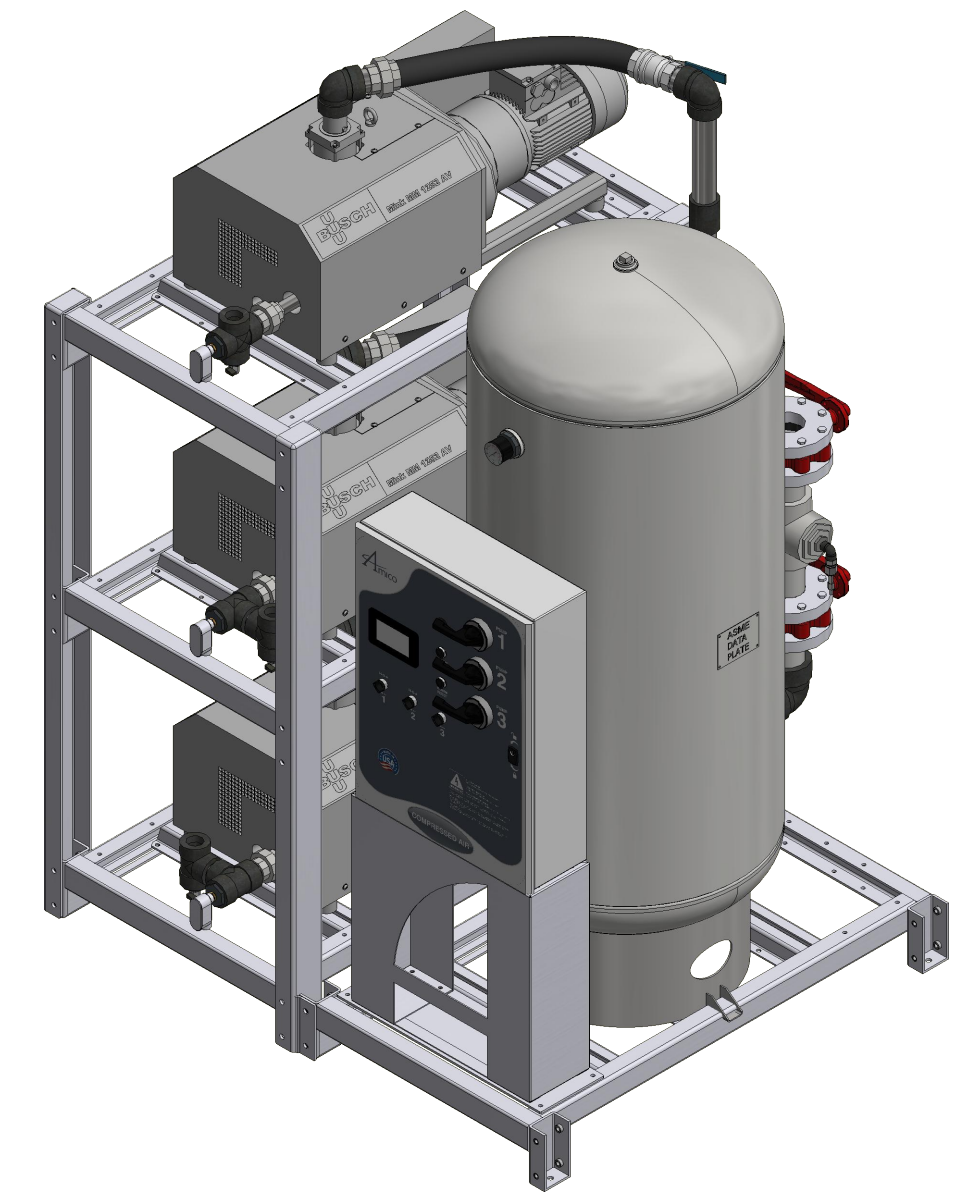
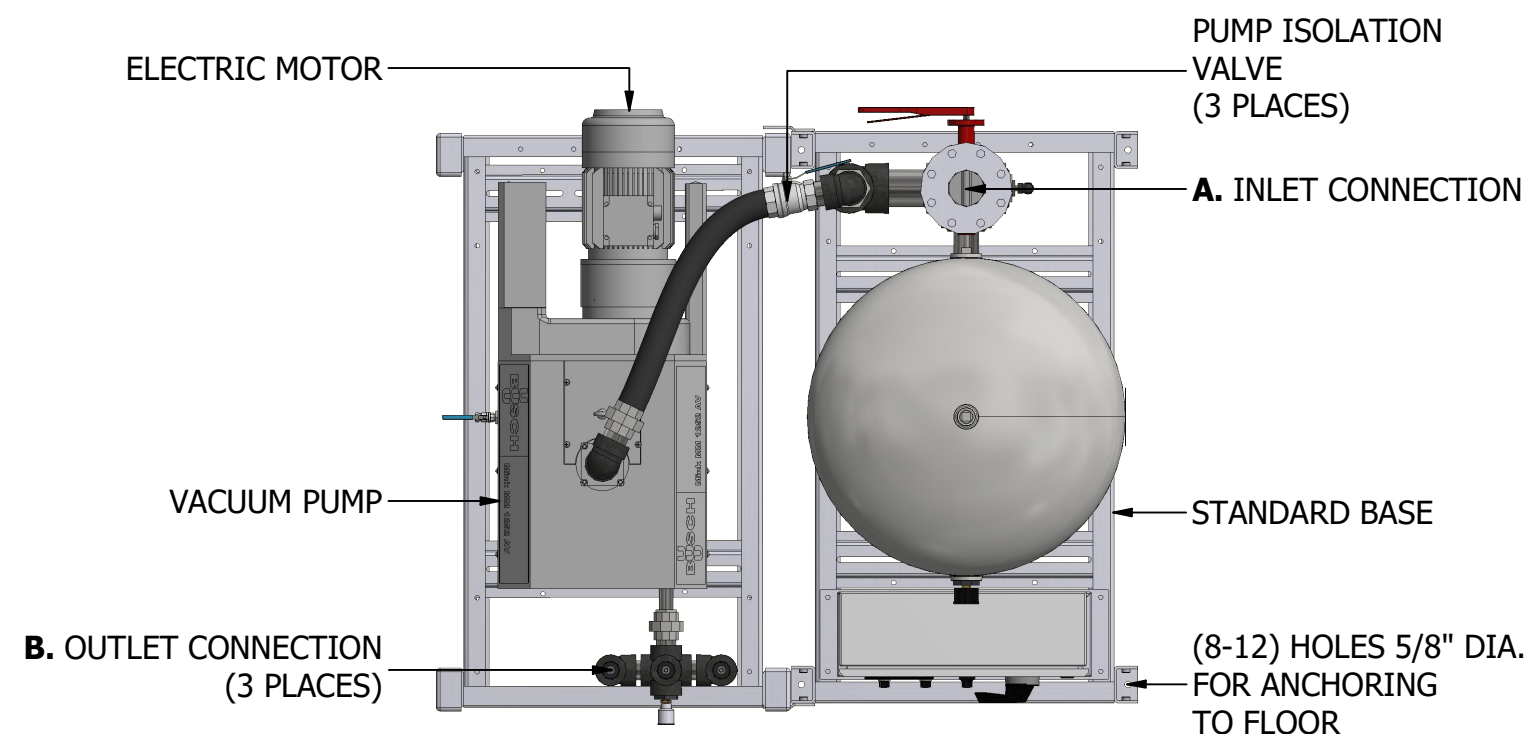


CONTACTLESS CLAW - DRY TRIPLEX STACK MOUNTED VACUUM SYSTEM (2.0 HP - 15.0 HP)



DIMENSIONS SUBJECT TO CHANGE WITHOUT NOTICE

MODEL	HP (kW)	A INLET NPT	B OUTLET NPT	TANK SIZE GALLON (LITRE)	PUMP SCFM @ 19" HG (LPM)		NFPA SYSTEM CAPACITIES WITH ONE COMPRESSOR ON STANDBY @ 19" HG (LPM)		WEIGHT IN LBS (KG)	SQ. FT. REQUIRED (M ²)	SYSTEM FLA (WITH ALL PUMPS RUNNING)				SYSTEM BTU/HR	SOUND LEVEL dB (A)	W (M)	L (M)	H (M)
					50 Hz Motor	60 Hz Motor	50 Hz Motor	60 Hz Motor			208V	230V	380V**	460V					
											208V	230V	380V**	460V					
V-CCD-T-200P-SS-N-020*	2 (1.49)	1.5	1.5	200 (757)	13.3 (377)	16.0 (453)	26.6 (753)	32.0 (906)	2718 (1233)	25.6 (2.38)	23	21	12	10	10,178	73	67 (1.70)	55 (1.40)	95 (2.41)
V-CCD-T-200P-SS-N-030*	3 (2.24)	1.5	1.5	200 (757)	17.5 (496)	21.0 (595)	35.0 (991)	42.0 (1189)	2751 (1248)	25.6 (2.38)	32	29	15	15	15,266	73	67 (1.70)	55 (1.40)	95 (2.41)
V-CCD-T-200P-SS-N-040*	4 (2.98)	1.5	1.5	200 (757)	24.2 (685)	29.0 (821)	48.4 (1371)	58.0 (1642)	2718 (1233)	25.6 (2.38)	35	32	17	16	20,356	82	67 (1.70)	55 (1.40)	95 (2.41)
V-CCD-T-200P-SS-N-050	5 (3.73)	1.5	1.5	200 (757)	31.7 (898)	38.0 (1076)	63.4 (1795)	76.0 (2152)	2751 (1248)	25.6 (2.38)	43	38	17	19	25,444	82	67 (1.70)	55 (1.40)	97 (2.46)
V-CCD-T-200P-SS-N-064*	6.4 (4.77)	3.0	1.5	200 (757)	43.3 (1226)	52.0 (1472)	86.6 (2452)	104.0 (2945)	3048 (1383)	28.4 (2.64)	53	51	29	26	32,568	82	67 (1.70)	61 (1.55)	97 (2.46)
V-CCD-T-200P-SS-N-075*	7.5 (5.59)	3.0	1.5	200 (757)	54.2 (1535)	65.0 (1841)	108.4 (3070)	130.0 (3681)	3081 (1398)	28.4 (2.64)	70	56	30	28	38,166	82	67 (1.70)	61 (1.55)	97 (2.46)
V-CCD-T-200P-SS-N-090*	9 (6.71)	3.0	2.0	200 (757)	64.2 (1818)	77.0 (2180)	128.4 (3636)	154.0 (4361)	3312 (1502)	54.2 (5.09)	73	65	35	32	45,800	85	101 (2.57)	78 (1.98)	91 (2.31)
V-CCD-T-200P-SS-N-100*	10 (7.46)	4.0	2.5	200 (757)	72.5 (2053)	87.0 (2464)	145.0 (4106)	174.0 (4927)	3612 (1638)	58.2 (5.42)	86	75	44	37	50,888	86	101 (2.57)	83 (2.11)	91 (2.31)
V-CCD-T-200P-SS-N-150*	15 (11.2)	4.0	2.5	200 (757)	107.5 (3044)	129.0 (3653)	215.0 (6088)	258.0 (7306)	3645 (1653)	58.2 (5.42)	126	109	46	55	76,334	85	101 (2.57)	83 (2.11)	91 (2.31)

*SYSTEM CONFIGURATION DIFFERS FROM MODEL SHOWN

**380 VOLT DATA PROVIDED AT 50HZ
ALL OTHER VOLTAGES ARE RATED AT 60HZ

ADDITIONAL MODELS AVAILABLE UPON REQUEST



600 Prime Place, Hauppauge
NY 11788, USA
Direct Tel: 905.764.0800
Tel: 1.877.462.6426
Fax: 1.866.440.4986