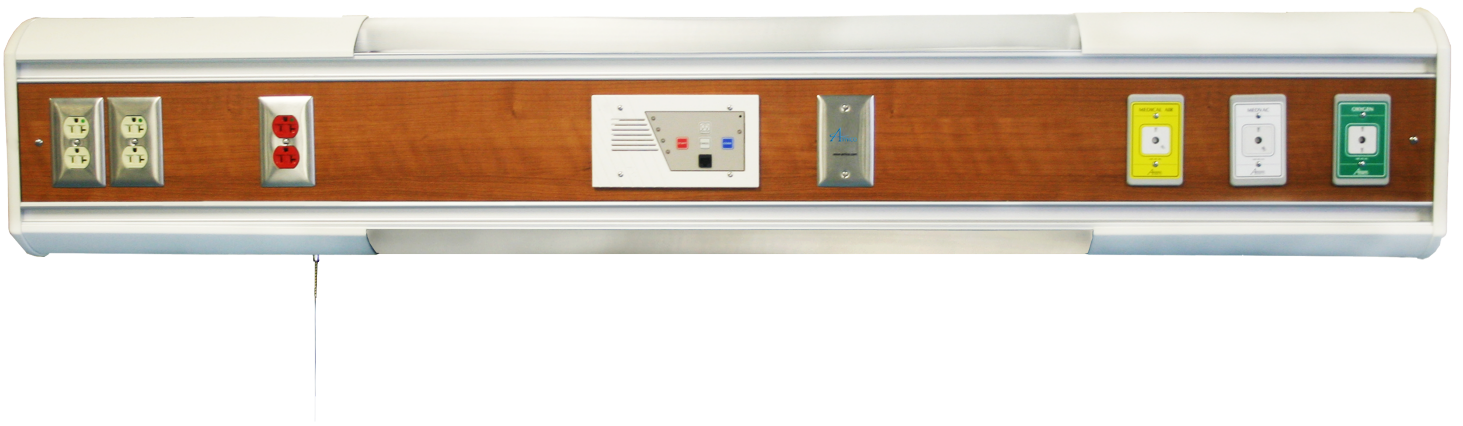


Installation Instructions

Sapphire Series Horizontal Headwall



Before Installation

Headwall installation should conform to local building codes.

NOTE: The installation instructions provided are for standard Amico products. Slight modifications to the installations may be required. The product shipped to the job site may not be exactly as shown in the installation drawings used in this manual.

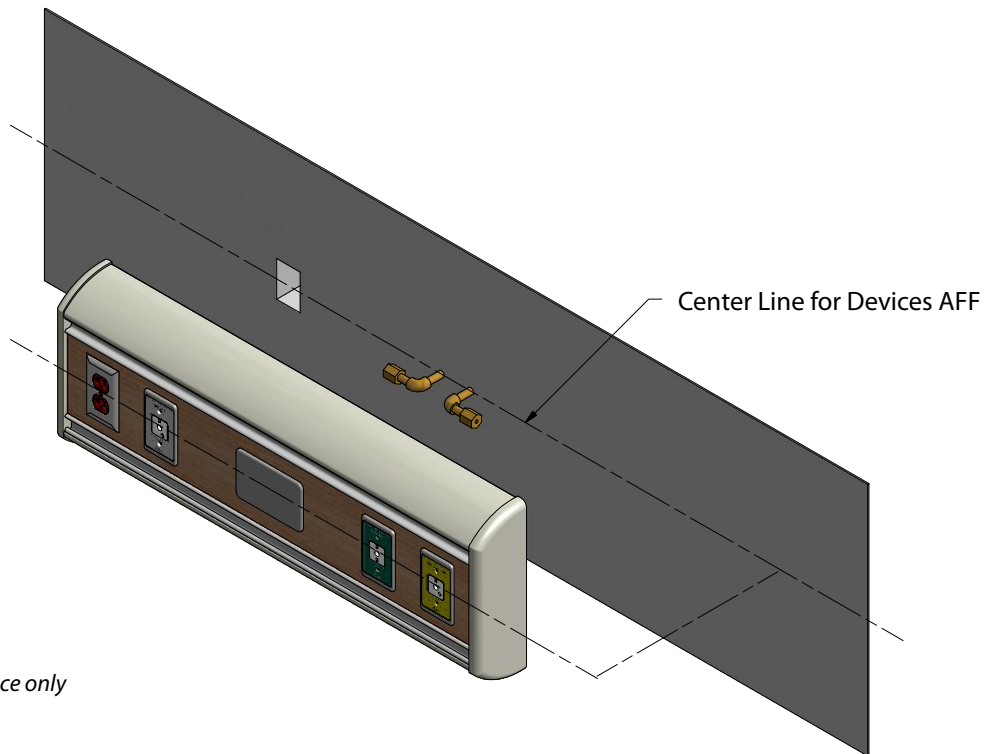


CAUTION: Please do not lift the headwall by the plastic end caps.

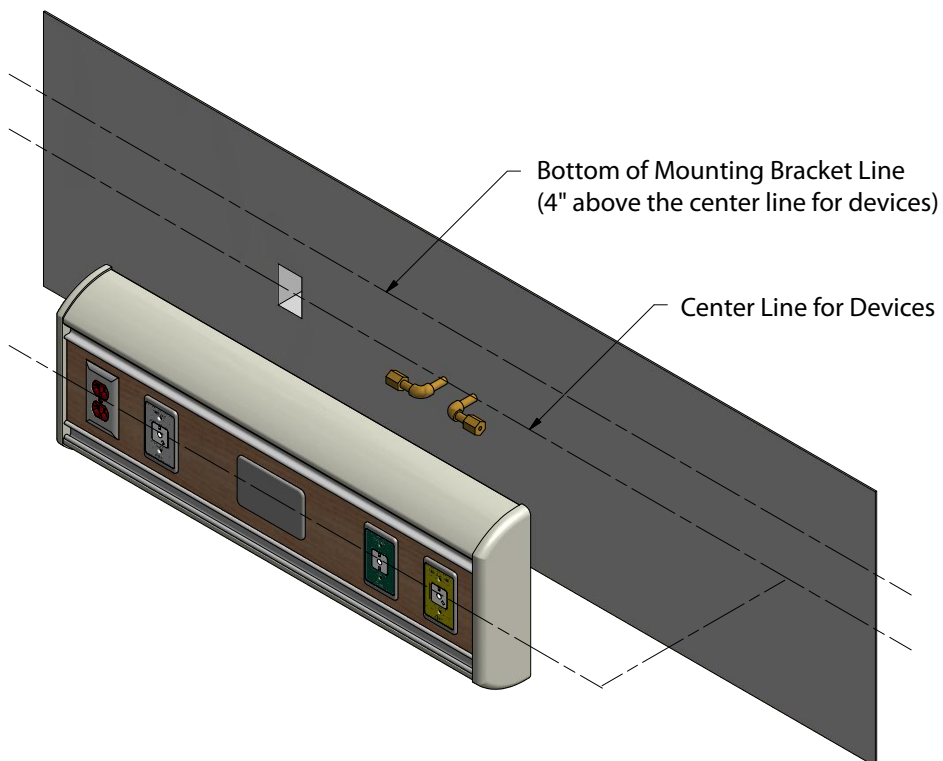
1. Review a copy of the final approved shop drawing(s) and/or submittal package. These documents will provide you with technical information specific to your installation, such as:
 - Equipment types and quantities
 - Room numbers and location
 - Shop drawings of each unit type
 - Wiring diagrams and rough-in locations
 - Ensure that the on-site rough-in locations have been prepared as indicated in the shop drawings
2. Locate the unit inside the shipping boxes that you wish to install. The contents of each shipping box are listed on the shipping document(s) and label.

Installation

1. Using shop drawings, mark the center line for devices AFF (above finished floor) on the wall.

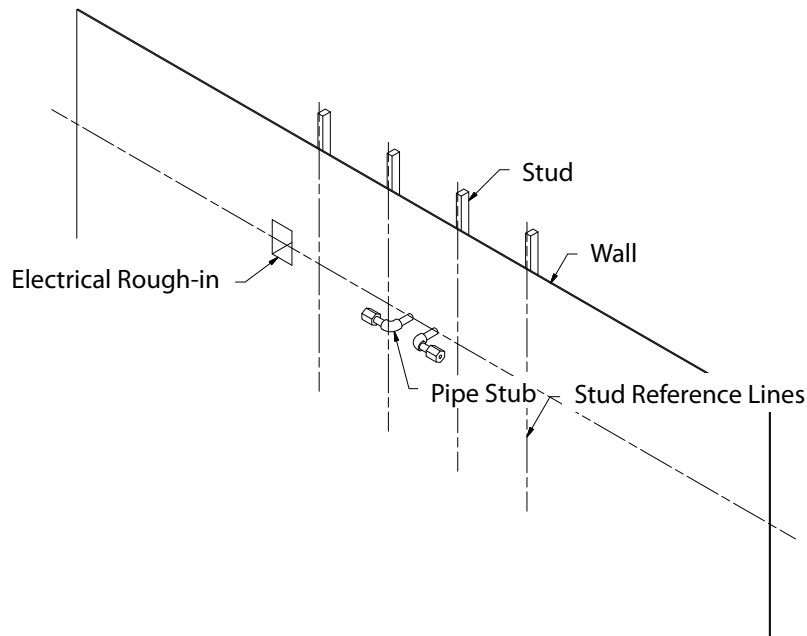


2. Mark a horizontal line for bottom of mounting bracket (to be installed later). This line is to be offset 4" (102 mm) above the center line for devices.

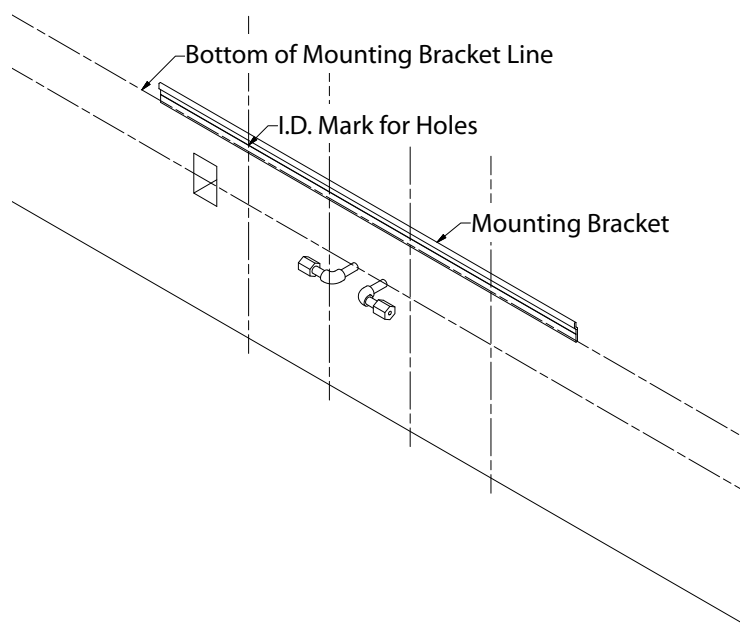


Installation

- Using a stud locator, mark the location of any metal studs or blocking in the building wall that intersect the headwall mounting location.

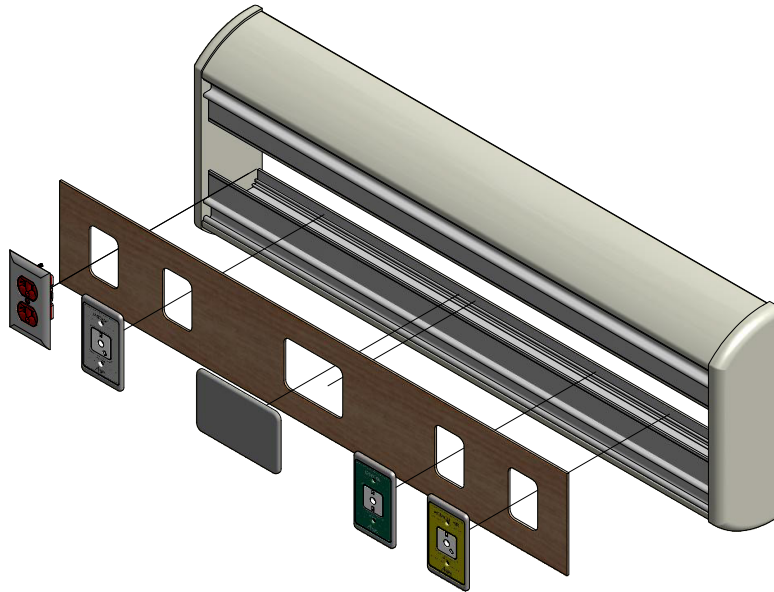


- Mount the bracket on the wall using hardware compliant to local building codes (supplied by others). Align the bracket horizontally according to the headwall mounting location. Bracket includes I.D. marks for locating holes vertically, which are to be drilled on-site according to the location of the studs. Remember to align the bottom of the bracket to the bottom of the bracket line marked in **step 2**.

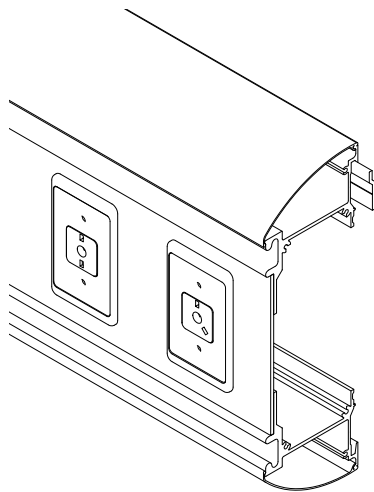


Installation

5. Check the rough-in drawing(s) for electrical and gas rough-in locations. Remove any cover plates and devices preventing the removal of the fascia, then remove the fascia panel(s) for access to the rough-in locations.



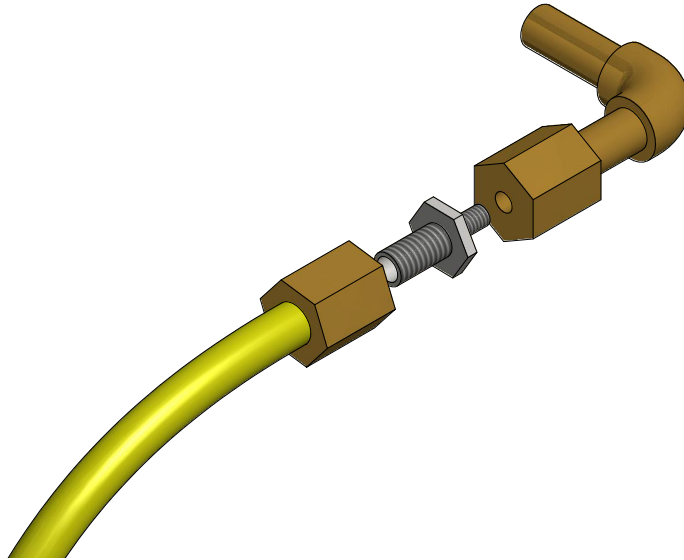
6. Verify the rough-in locations on the wall and align with the rough-in location in the headwall. Hang the headwall unit on the wall, over the mounting bracket.



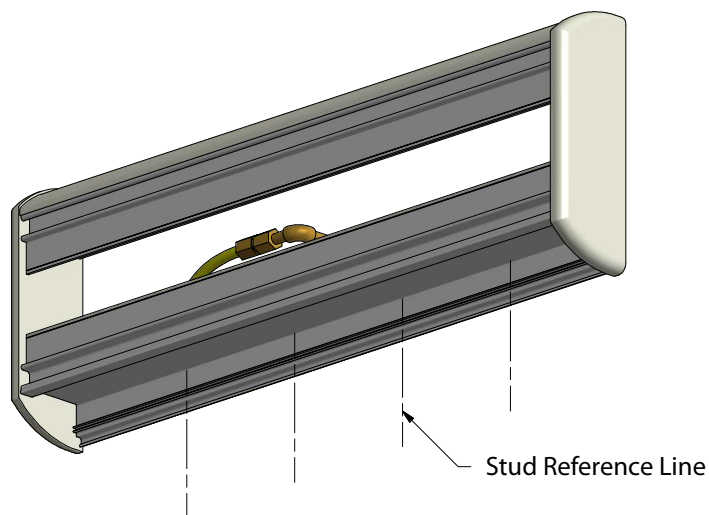
NOTE: End cover removed in graphic for clarity. Do not remove.

Installation

7. Make all of the necessary electrical connections at the rough-in locations.



8. Connect the compressor hose (yellow) within the headwall to the pipe stub. Remove the adapter from the hose, fasten it to the pipe stub first, then fasten the hose to the adapter.
9. Remove the lower cover for mounting access. Secure the headwall to the wall through the lower section using hardware compliant to local building codes (provided by others). The lower section is to be drilled on-site according to the stud location. Replace the cover when done.



10. Reinstall any fascia panels, devices and covers removed in **step 5**.

Light Bulb Installation (if applicable)

1. Remove the screws that hold the lens covers (2 screws typically each for the top and bottom).



2. Attach the light bulbs (top and bottom).



3. Replace the lens covers using the provided screws.

www.amico.com

Amico Beds Corporation | 85 Fulton Way, Richmond Hill, ON L4B 2N4, Canada
Toll Free Tel: 1.877.462.6426 | Tel: 905.764.0800 | Fax: 905.764.0862
Email: info@amico.com | www.amico.com

TTS-IM-SAPPHIRE-HORIZONTAL-HEADWALL 01.09.2023

