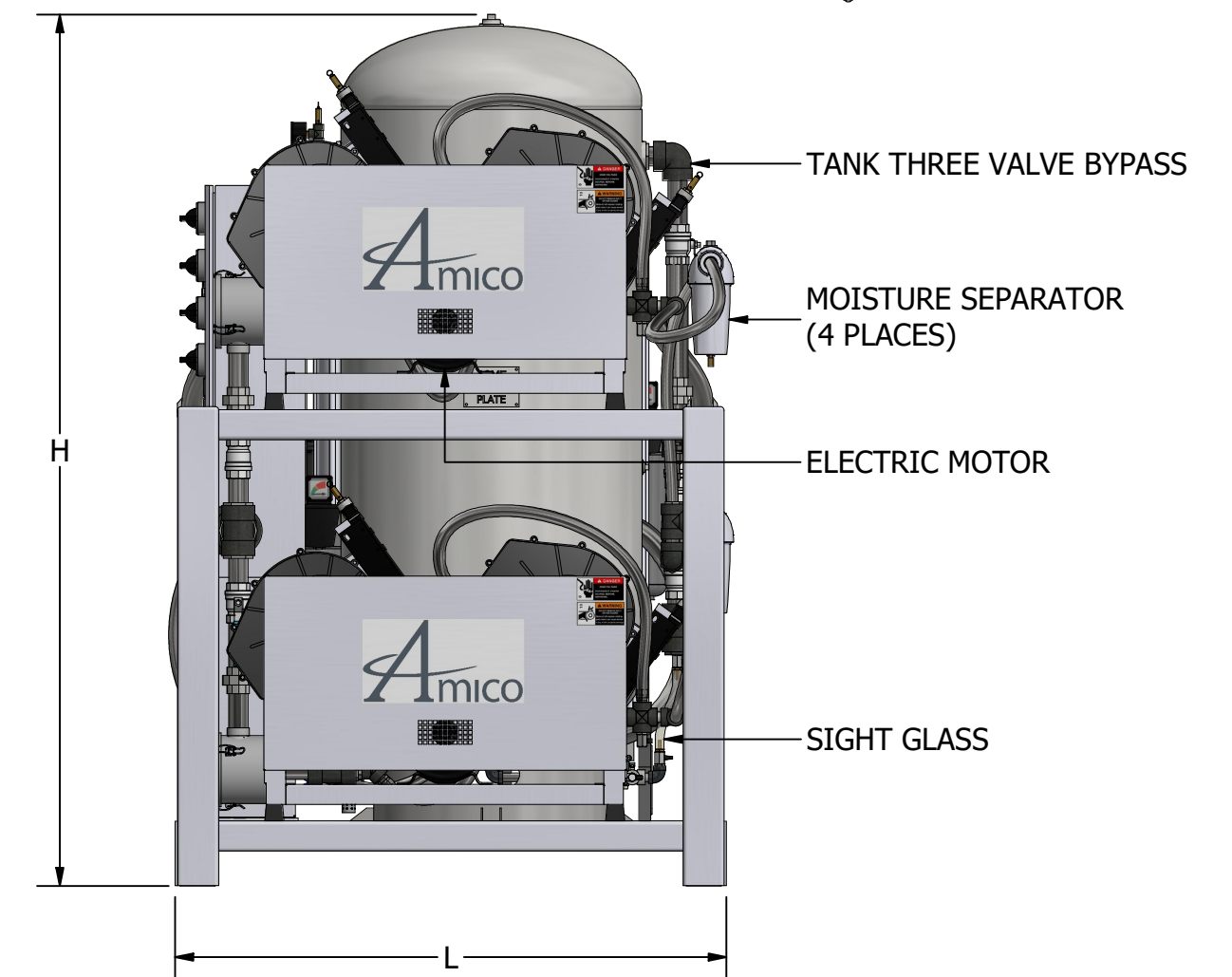
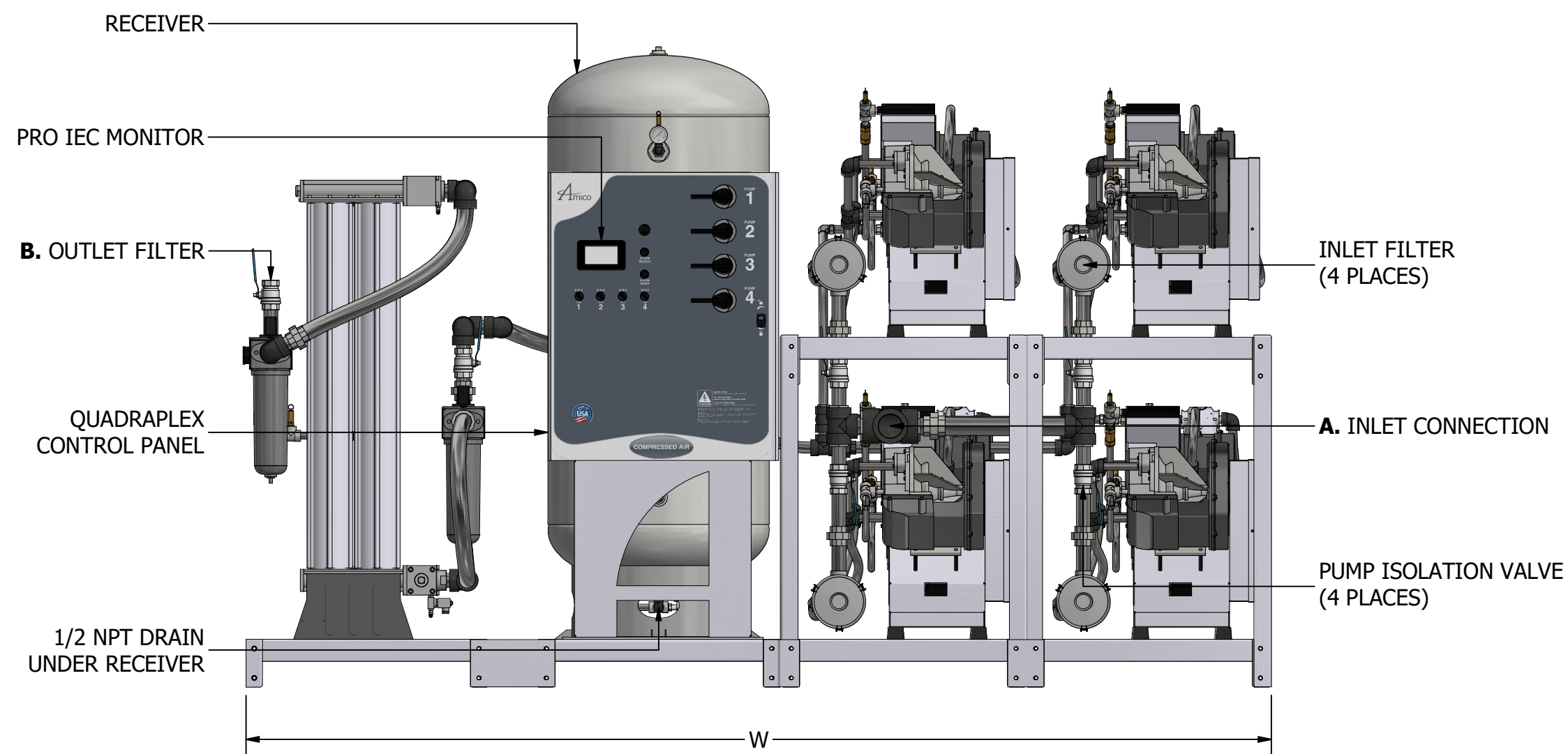
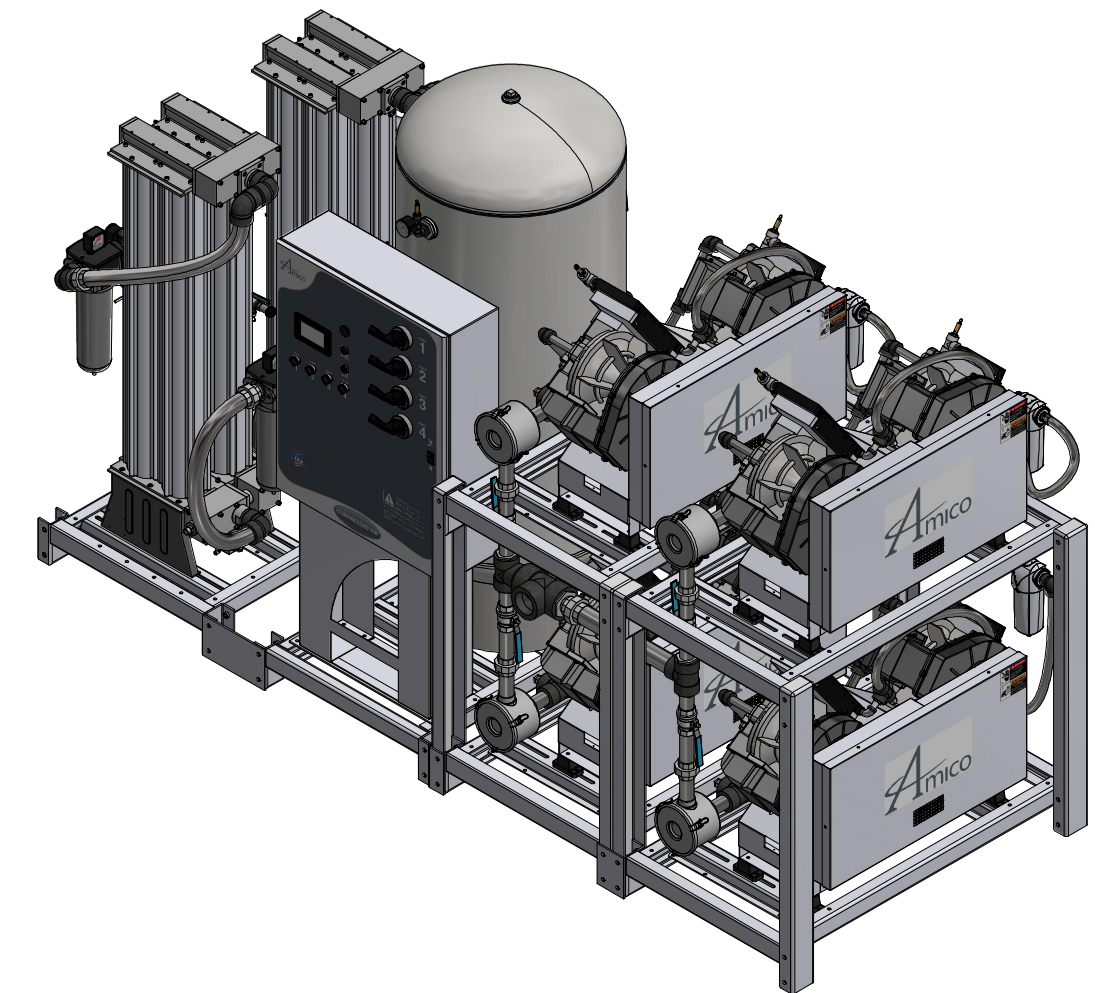
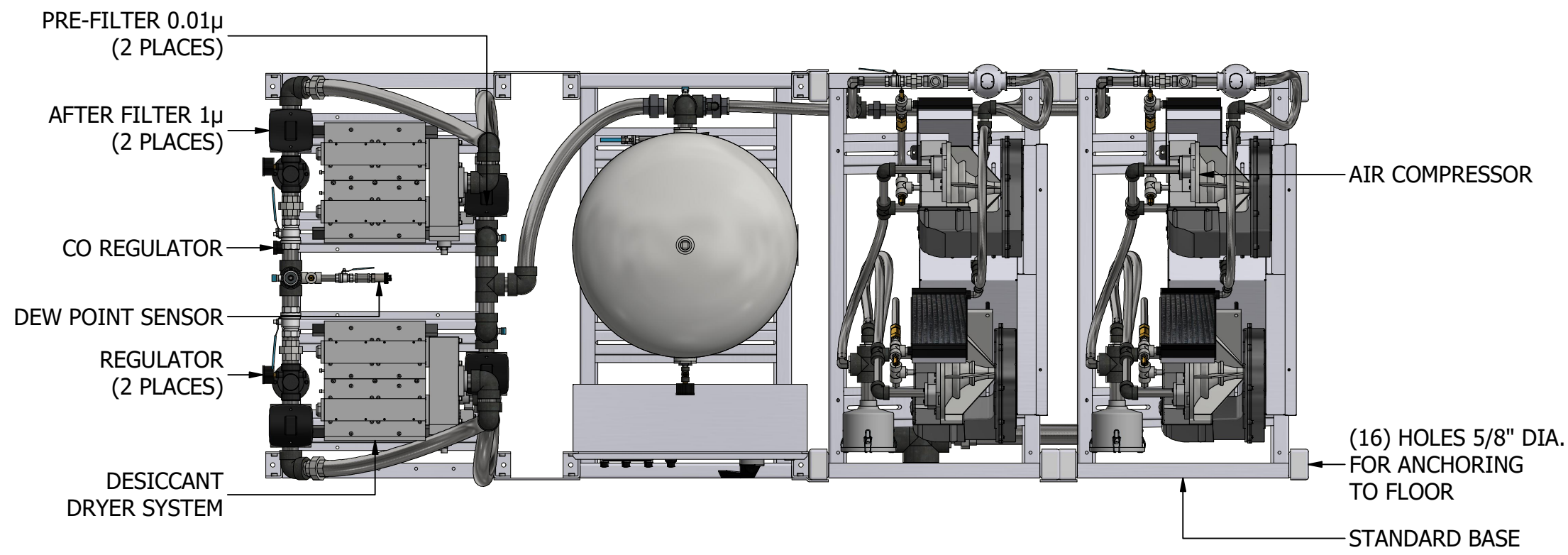


# QUADRAPLEX SCROLL AIR PLANT WITH DESICCANT AIR TREATMENT SYSTEM (2.0 HP - 20.0 HP)



\*SYSTEM CONFIGURATION DIFFERS FROM MODEL SHOWN

DIMENSIONS SUBJECT TO CHANGE WITHOUT NOTICE

\*\*380 VOLT DATA PROVIDED AT 50HZ  
 ALL OTHER VOLTAGES ARE RATED AT 60HZ

ADDITIONAL MODELS AVAILABLE UPON REQUEST

MODEL	HP (kW)	A INLET NPT	B OUTLET NPT	TANK SIZE GALLON (LITRE)	COMPRESSOR SCFM (LPM)		NFPA SYSTEM CAPACITIES WITH ONE COMPRESSOR ON STANDBY (LPM)		WEIGHT IN LBS (KG)	SQ. FT. REQUIRED (M <sup>2</sup> )	SYSTEM FLA (WITH ALL COMPRESSORS RUNNING)				SYSTEM BTU/HR	SOUND LEVEL dB (A)	W (M)	L (M)	H (M)
					@ 50 psig	@ 120 psig	@ 50 psig	@ 120 psig			208V	230V	380V**	460V					
A-SCD-Q-200P-SS-N-050*	5 (3.73)	2.0	0.5	200 (757)	15.2 (430)	14.1 (399)	45.6 (1291)	42.3 (1198)	3453 (1566)	51.9 (4.81)	62	55	33	28	38,166	79	101 (2.56)	74 (1.88)	91 (2.31)
A-SCD-Q-200P-SS-N-075	7.5 (5.59)	2.0	1.0	200 (757)	25.2 (714)	24.0 (680)	75.6 (2141)	72.0 (2039)	4031 (1828)	51.2 (4.76)	86	75	47	39	57,249	79	134 (3.40)	55 (1.40)	91 (2.31)
A-SCD-Q-200P-SS-N-100	10 (7.46)	2.0	1.0	200 (757)	34.8 (985)	32.0 (906)	104.4 (2956)	96.0 (2718)	4339 (1968)	51.2 (4.76)	112	102	62	52	76,332	79	134 (3.40)	55 (1.40)	91 (2.31)
A-SCD-Q-200P-SS-N-150	15 (11.2)	3.0	1.5	200 (757)	50.4 (1427)	48.0 (1359)	151.2 (4282)	144.0 (4078)	5233 (2374)	53.9 (5.01)	158	144	88	73	114,498	80	141 (3.58)	55 (1.40)	91 (2.31)
A-SCD-Q-200P-SS-N-200	20 (14.9)	3.0	1.5	200 (757)	69.6 (1971)	64.0 (1812)	208.8 (5913)	192.0 (5437)	5657 (2566)	64.6 (6.01)	216	196	111	99	152,667	84	141 (3.58)	66 (1.68)	91 (2.31)



600 Prime Place, Hauppauge  
 NY 11788, USA  
 Direct Tel: 905.764.0800  
 Tel: 1.877.462.6426  
 Fax: 1.866.440.4986