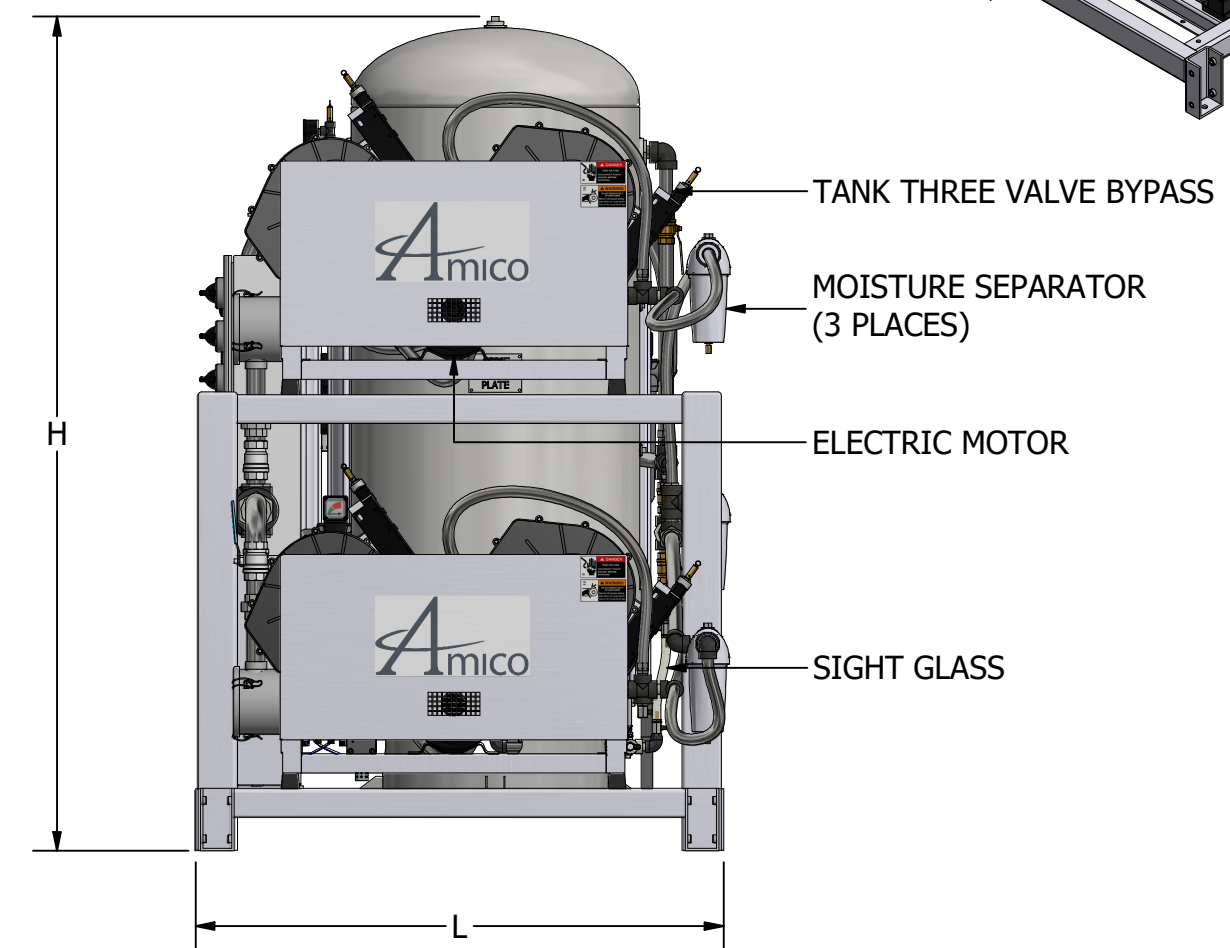
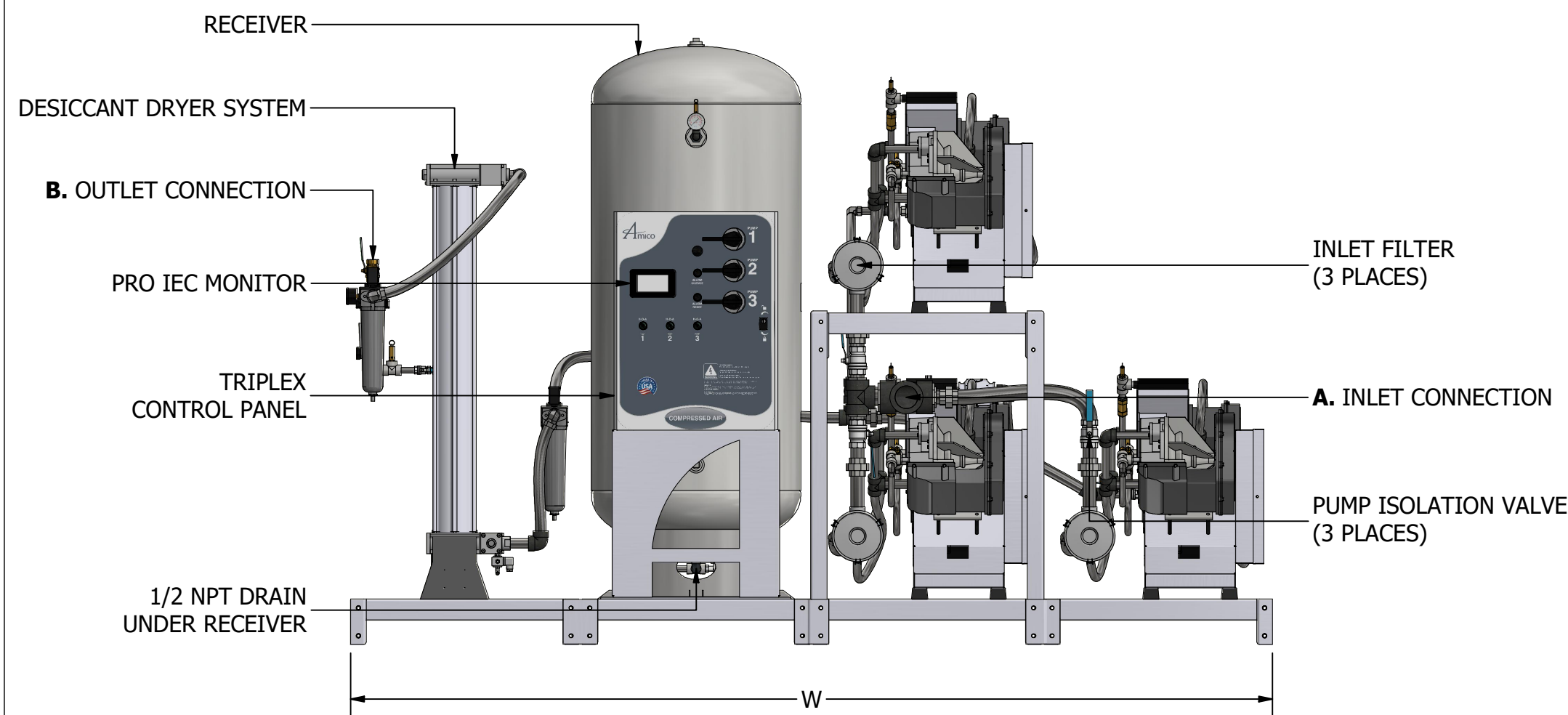
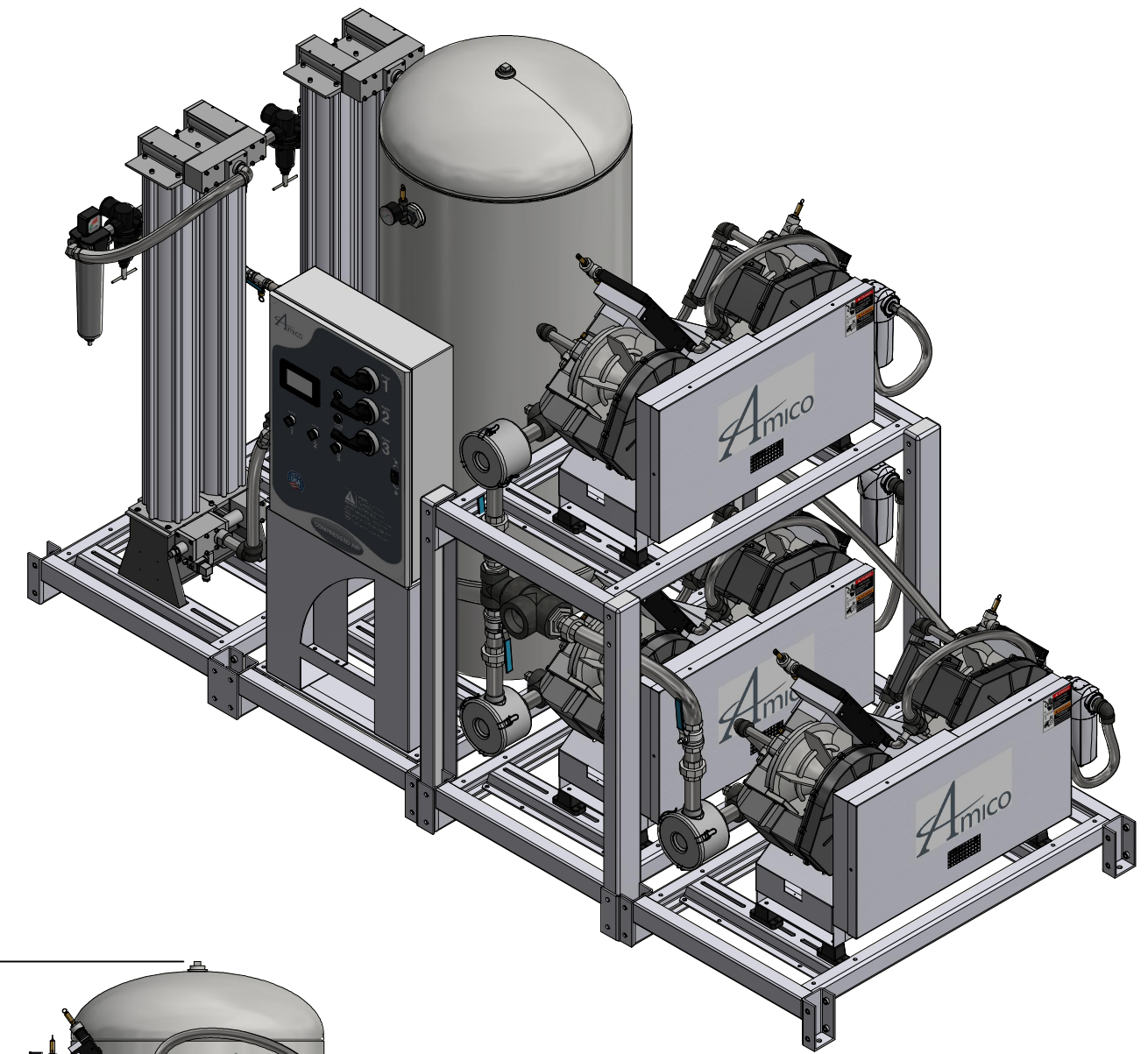
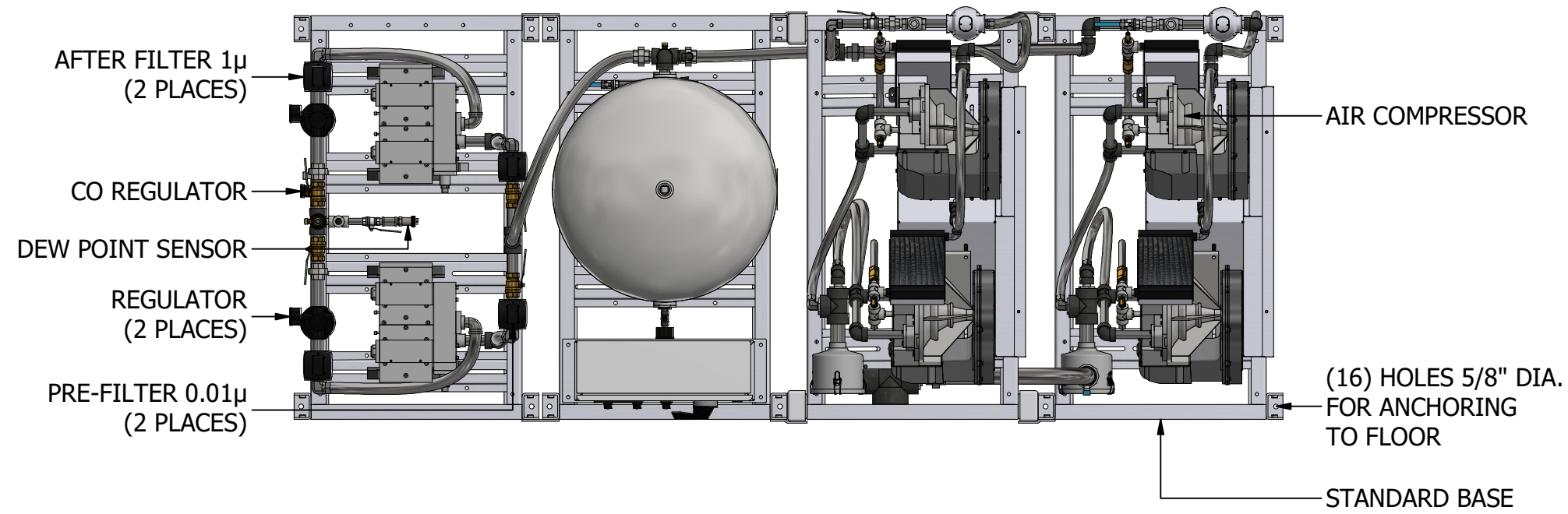


# TRIPLEX SCROLL AIR PLANT WITH DESICCANT AIR TREATMENT SYSTEM (2.0 HP - 20.0 HP)



DIMENSIONS SUBJECT TO CHANGE WITHOUT NOTICE

**\*SYSTEM CONFIGURATION DIFFERS FROM MODEL SHOWN**

**\*\*380 VOLT DATA PROVIDED AT 50HZ  
ALL OTHER VOLTAGES ARE RATED AT 60HZ**

**ADDITIONAL MODELS AVAILABLE UPON REQUEST**

MODEL	HP (KW)	A INLET NPT	B OUTLET NPT	TANK SIZE GALLON (LITRE)	COMPRESSOR SCFM (LPM)		NFPA SYSTEM CAPACITIES WITH ONE COMPRESSOR ON STANDBY (LPM)		WEIGHT IN LBS (KG)	SQ. FT. REQUIRED (M <sup>2</sup> )	SYSTEM FLA (WITH ALL COMPRESSORS RUNNING)				SYSTEM BTU/HR	SOUND LEVEL dB (A)	W (M)	L (M)	H (M)
					@ 50 psig	@ 120 psig	@ 50 psig	@ 120 psig			208V	230V	380V**	460V					
A-SCD-T-200P-SS-N-020*	2 (1.49)	1.5	0.5	200 (757)	6.2 (176)	5.6 (159)	12.4 (351)	11.2 (317)	2699 (1224)	51.4 (4.78)	21	19	11	9	10,178	77	100 (2.54)	74 (1.88)	91 (2.31)
A-SCD-T-200P-SS-N-030*	3 (2.24)	1.5	0.5	200 (757)	9.2 (261)	8.5 (241)	18.4 (521)	17.0 (481)	2837 (1297)	51.4 (4.78)	29	26	15	13	15,266	77	100 (2.54)	74 (1.88)	91 (2.31)
A-SCD-T-200P-SS-N-050*	5 (3.73)	2.0	0.5	200 (757)	15.2 (430)	14.1 (399)	30.4 (861)	28.2 (799)	2854 (1295)	51.4 (4.78)	46	41	24	20	25,444	77	100 (2.54)	74 (1.88)	91 (2.31)
A-SCD-T-200P-SS-N-075*	7.5 (5.59)	2.0	0.5	200 (757)	25.2 (714)	24.0 (680)	50.4 (1427)	48.0 (1359)	2971 (1648)	51.4 (4.78)	64	56	34	28	38,166	77	100 (2.54)	74 (1.88)	91 (2.31)
A-SCD-T-200P-SS-N-100*	10 (7.46)	2.0	1.0	200 (757)	34.8 (985)	32.0 (906)	69.6 (1971)	64.0 (1812)	3604 (1635)	51.4 (4.78)	84	76	46	38	50,888	77	100 (2.54)	74 (1.88)	91 (2.31)
A-SCD-T-200P-SS-N-150	15 (11.2)	3.0	1.0	200 (757)	50.4 (1427)	48.0 (1359)	100.8 (2854)	96.0 (2718)	3943 (1788)	50.8 (4.73)	118	107	65	54	76,334	78	133 (3.38)	55 (1.40)	91 (2.31)
A-SCD-T-200P-SS-N-200	20 (14.9)	3.0	1.0	200 (757)	69.6 (1971)	64.0 (1812)	139.2 (3942)	128.0 (3625)	4085 (1853)	61.0 (5.68)	162	147	83	73	101,778	82	133 (3.38)	66 (1.68)	91 (2.31)



600 Prime Place, Hauppauge  
NY 11788, USA  
Direct Tel: 905.764.0800  
Tel: 1.877.462.6426  
Fax: 1.866.440.4986